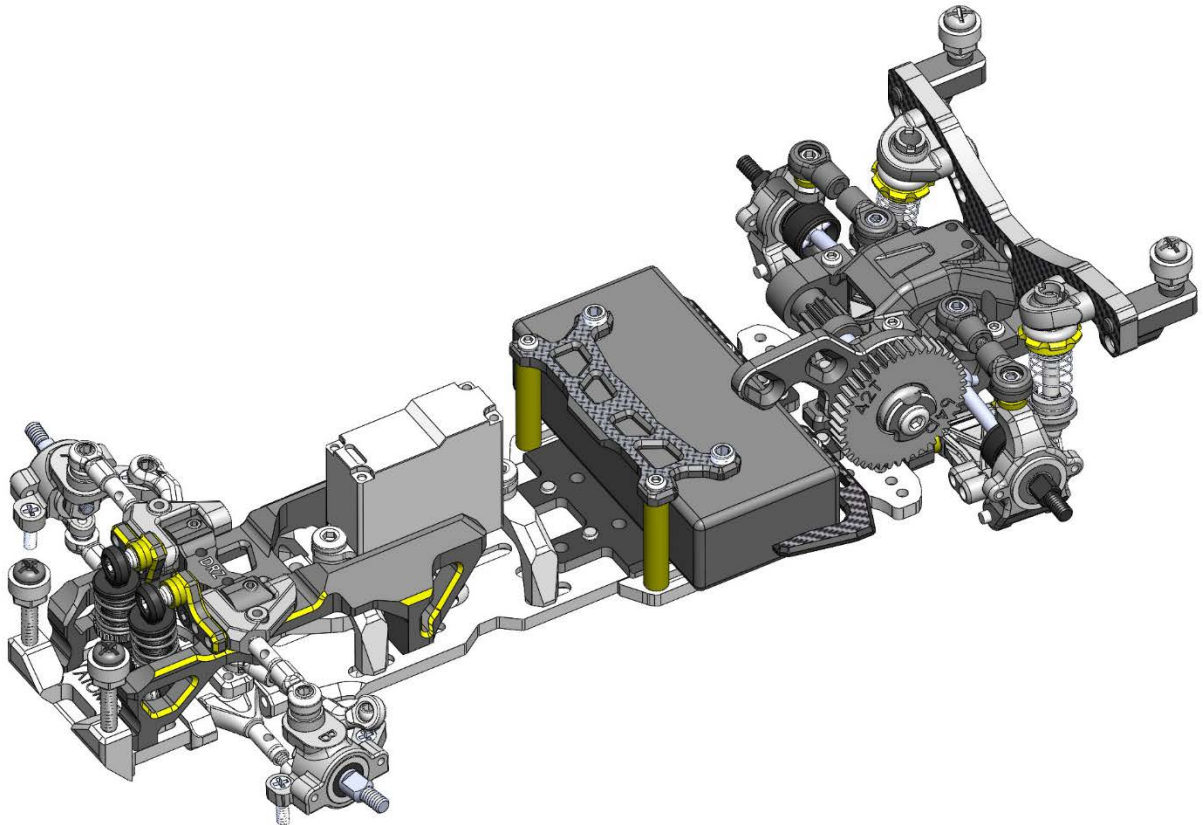
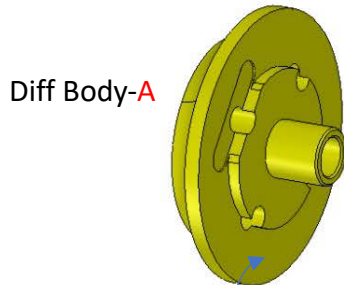
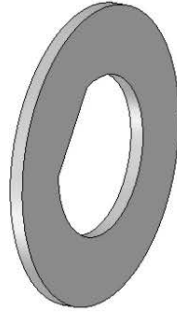


DRZ3-MS



Step 01 – Ball Diff (open Bag 01-05)

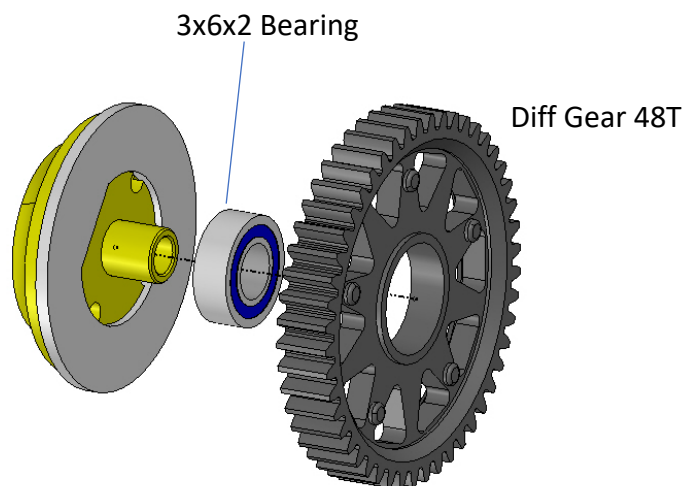
Diff Body-A



Steel Pressure Plate

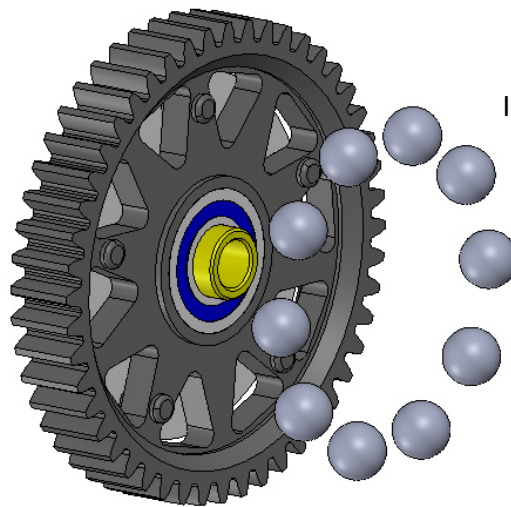
For better result, polish the plates using fine sandpaper, #2000 or #3000

Apply Ball Diff Grease to the surface, as sticky agent to hold the pressure plate in place.

Step 02 – Diff Gear

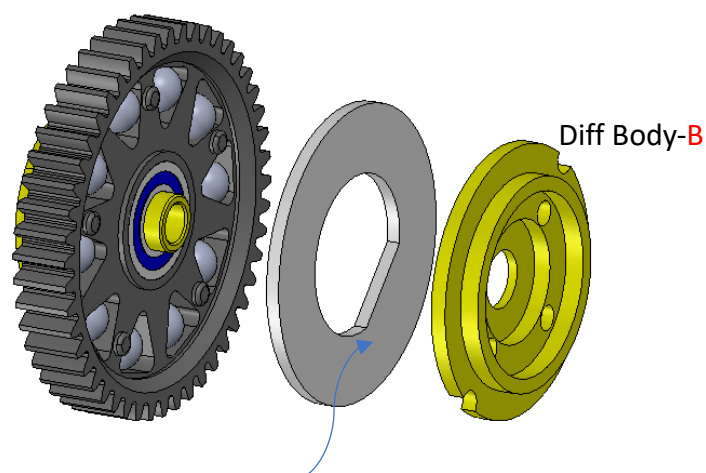
3x6x2 Bearing

Diff Gear 48T

Step 03 – Diff Balls

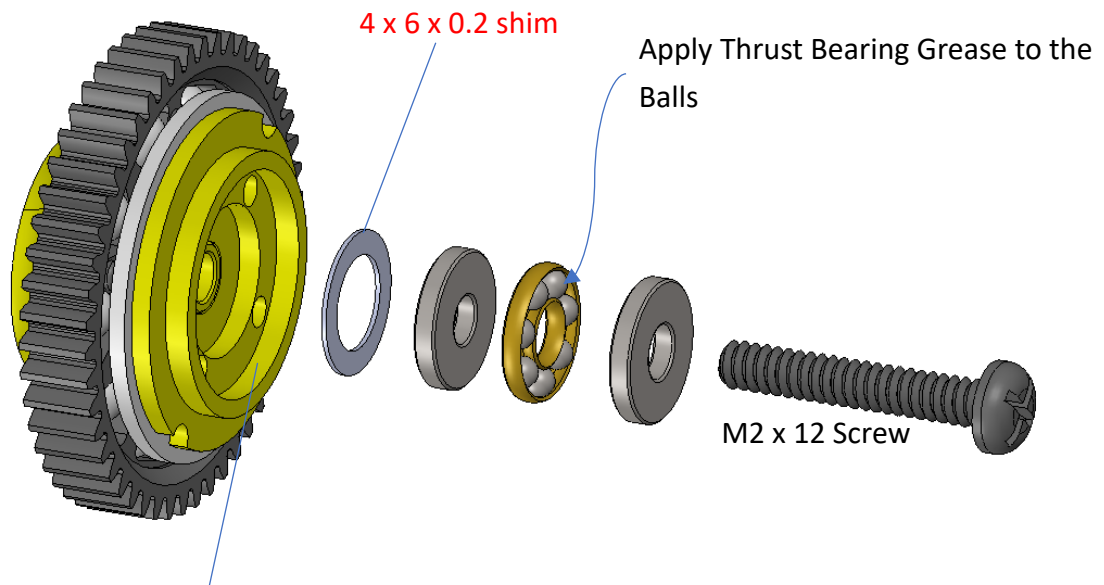
Insert 2.381 Balls to the Ring.

- 1- Apply Ball Diff Grease to your hand palm.
- 2- Then put all the balls on palm.
- 3- Rub the balls with finger to make sure the grease is evenly applied on ball surface.
- 4- Put the balls in the gear ring.

Step 04 – Fix Pressure Plate

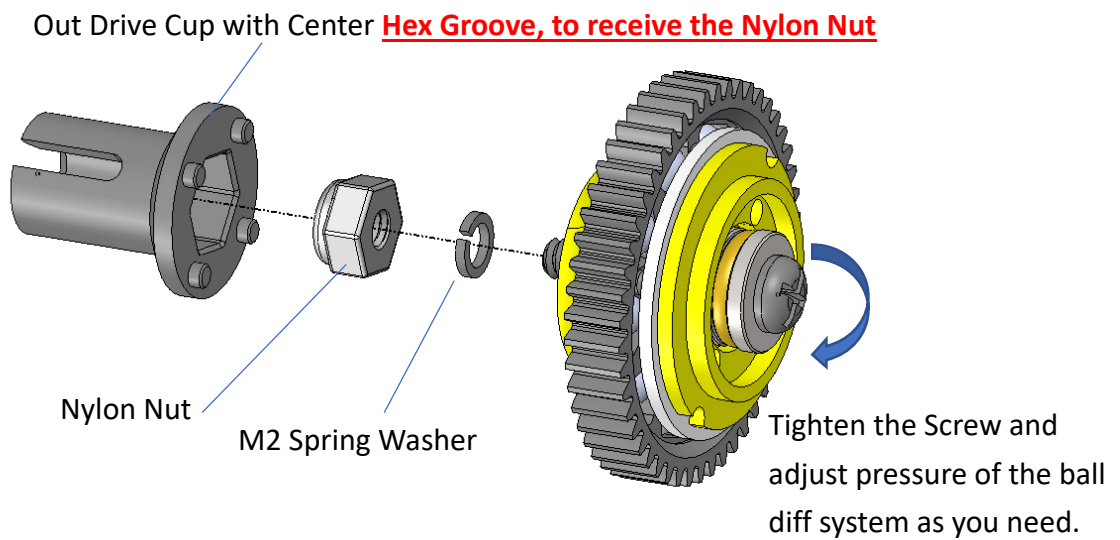
Apply Ball Diff Grease to the surface, as sticky agent to hold the pressure plate in place.

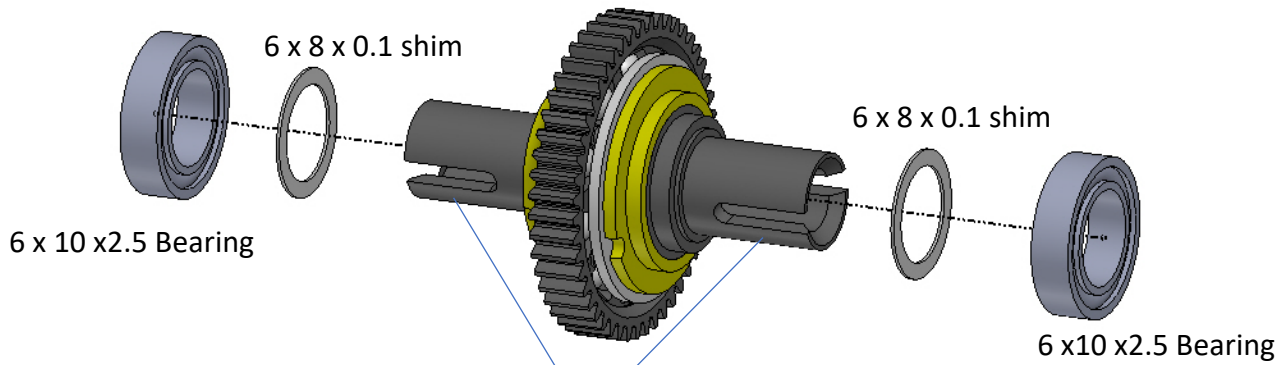
Step 05 – Thrust Bearing



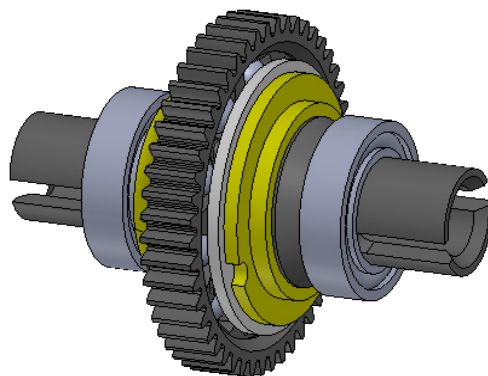
*** Note the orientation of the parts, Thrust Bearing must be fixed on the Diff Body - B.

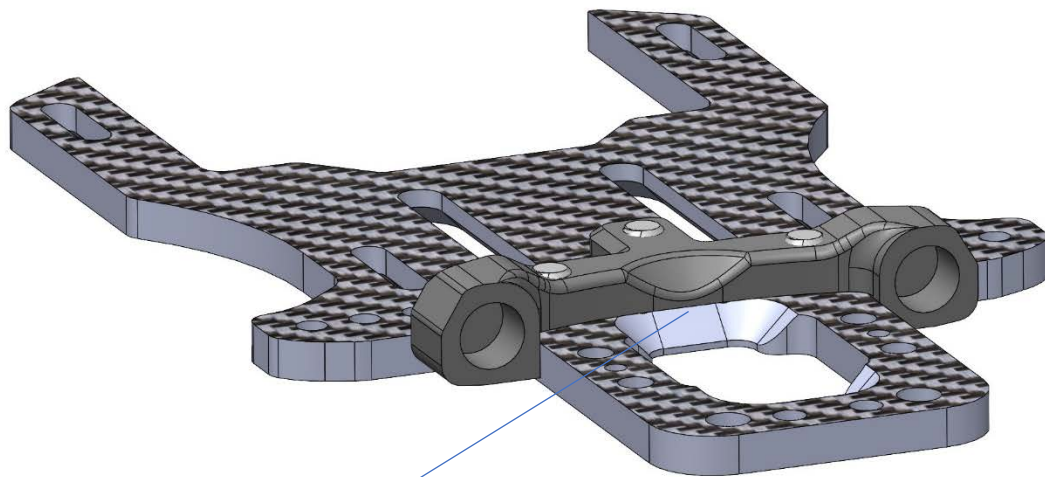
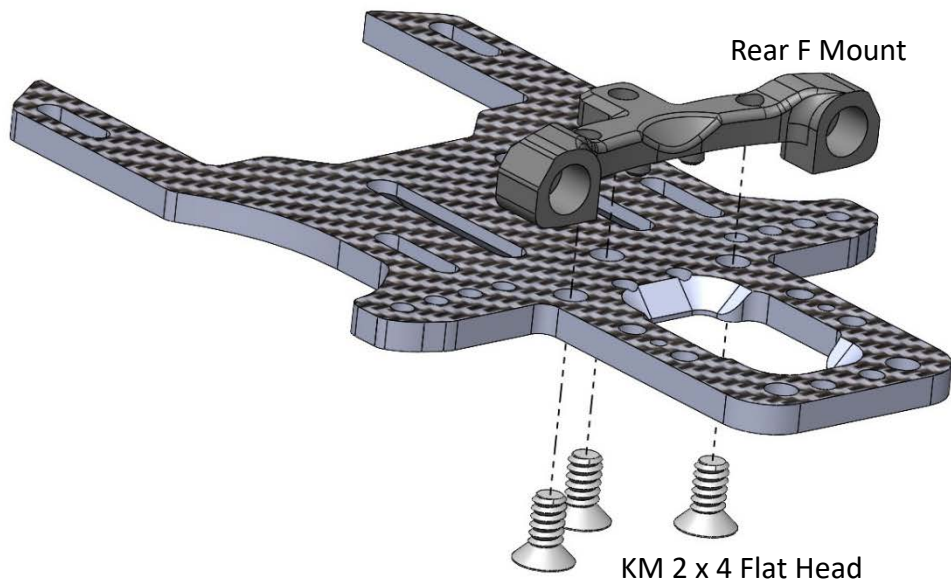
Step 06 – Spring Washer



Step 07 – Fix Bearing

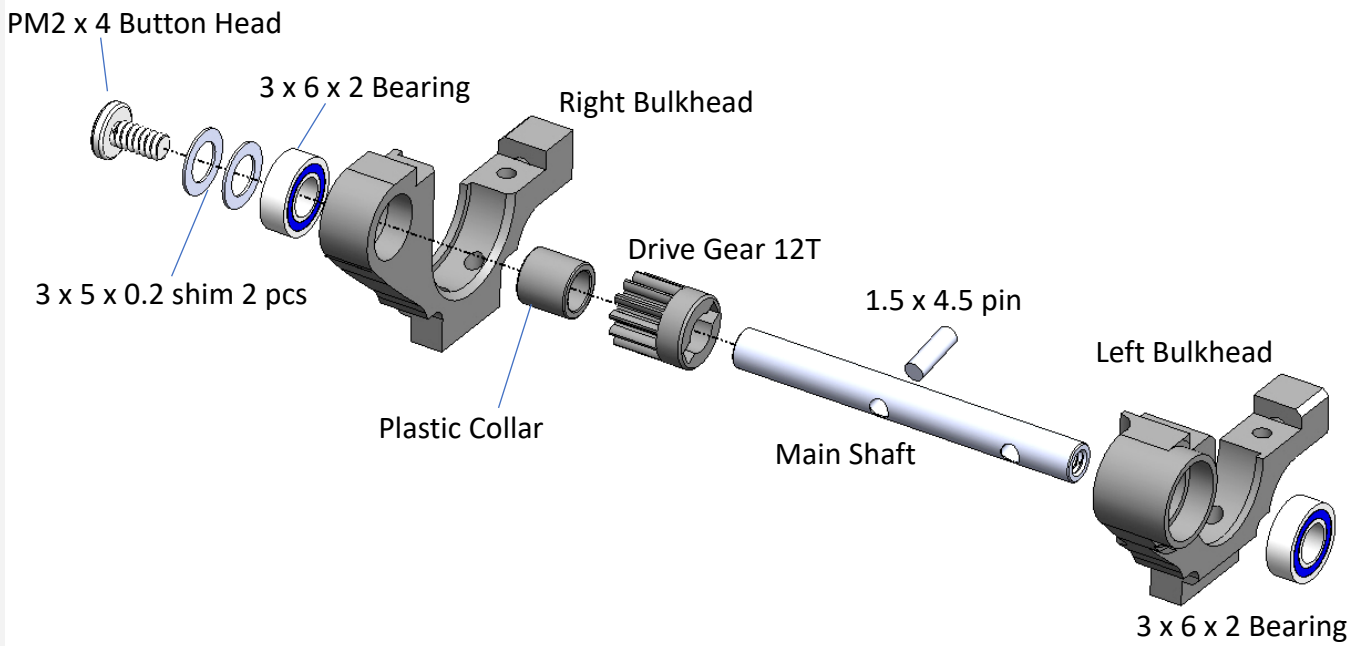
Make sure all the 4 legs of the drive cup are fully fitted to the metal hub.

Ball Diff Ready

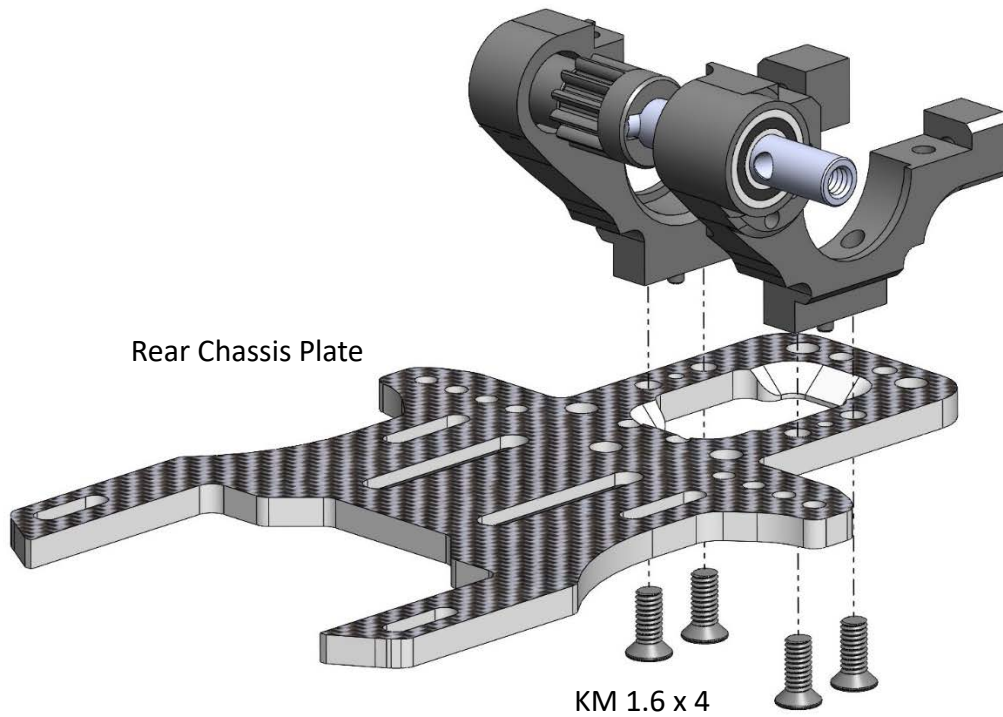
Step 08 – Rear Arm Mount (open Bag 06 and 07)

Make sure the arm mount is fully sitting on the chassis without gap. Otherwise, it may touch the ball diff in later step of installation.

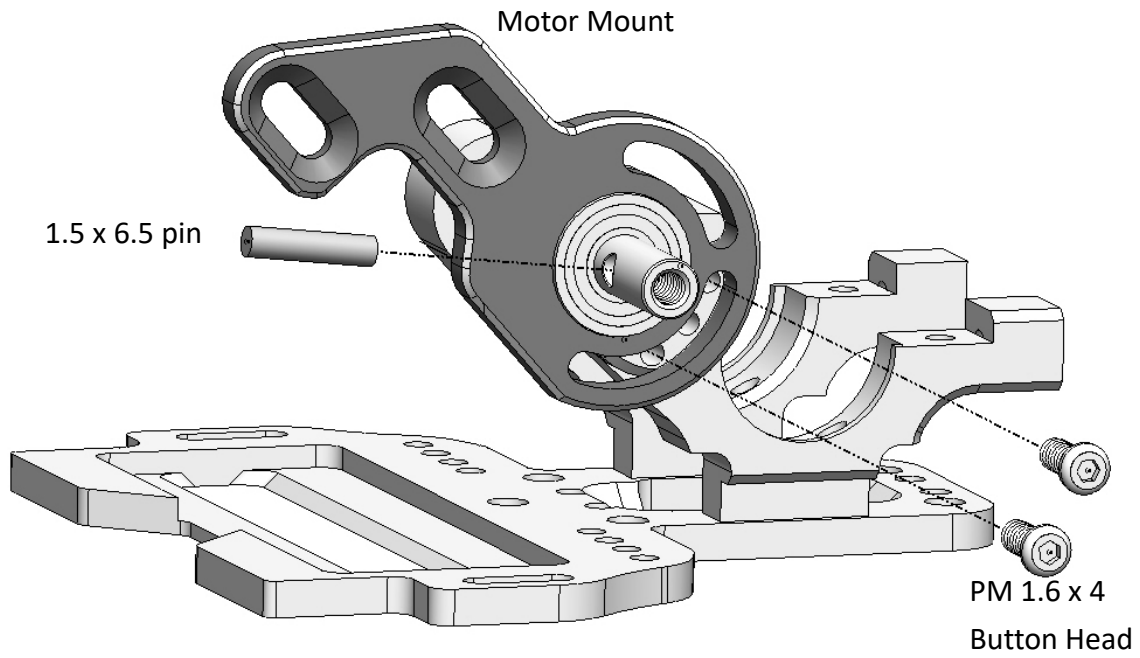
Step 09 – Rear Bulkhead



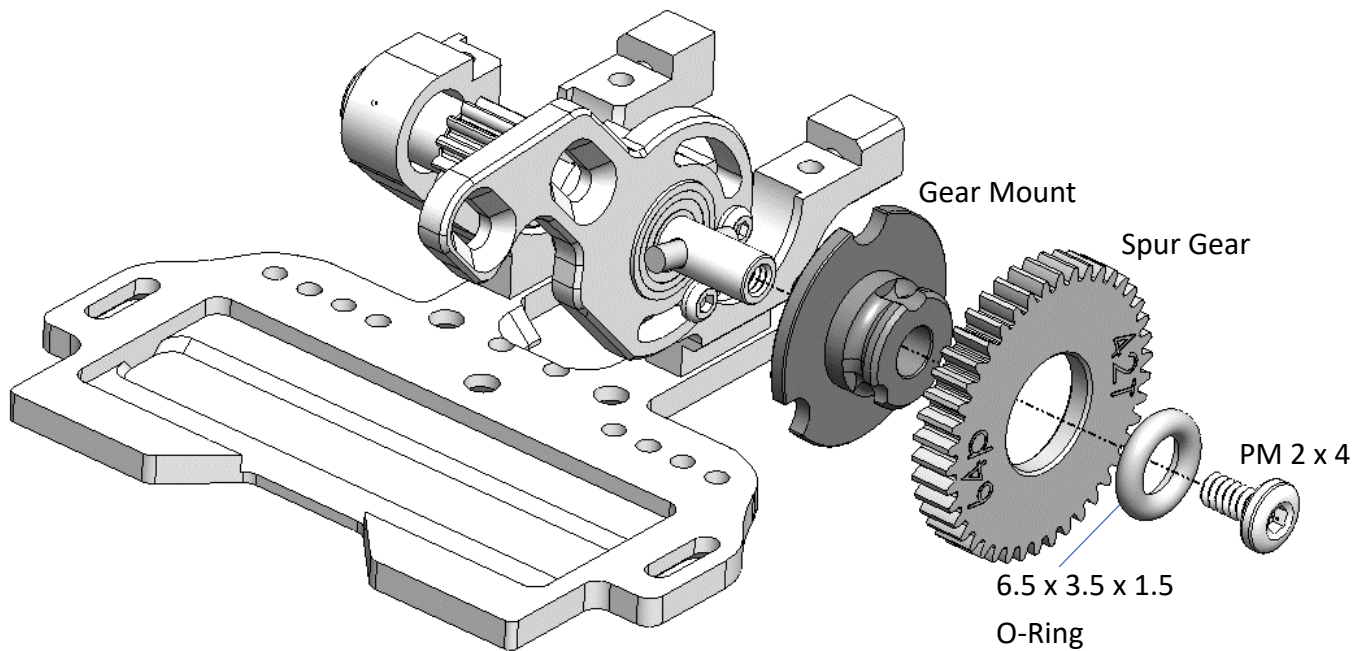
Step 10 – Rear Bulkhead



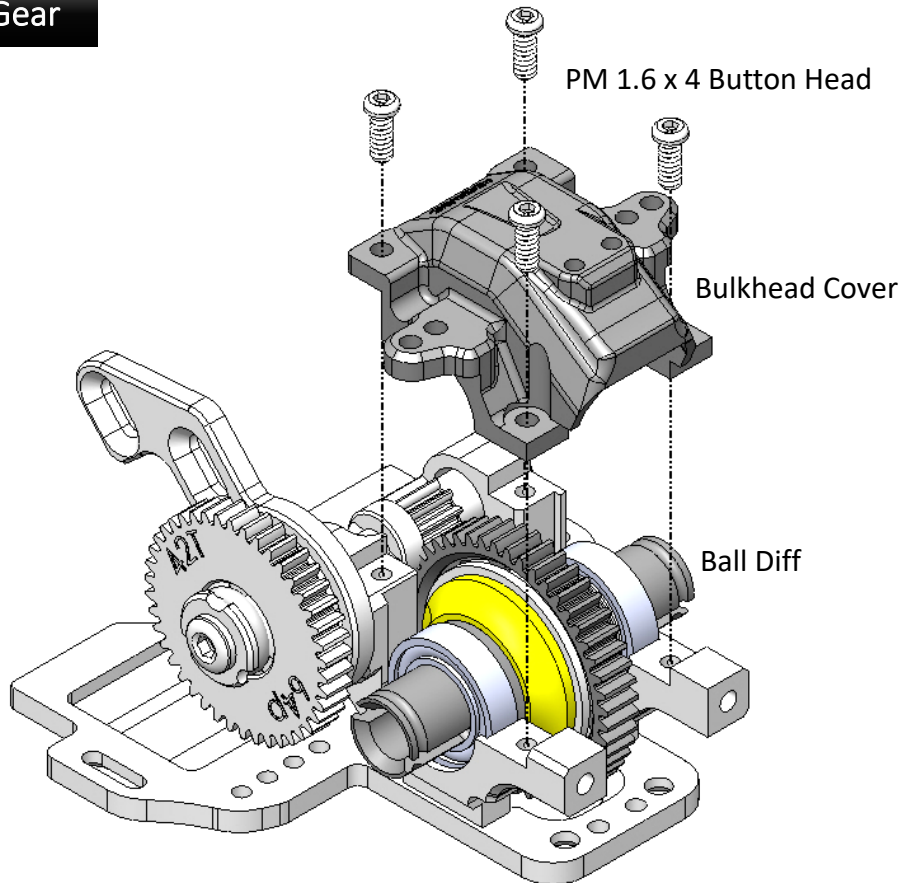
Step 11 – Motor Mount



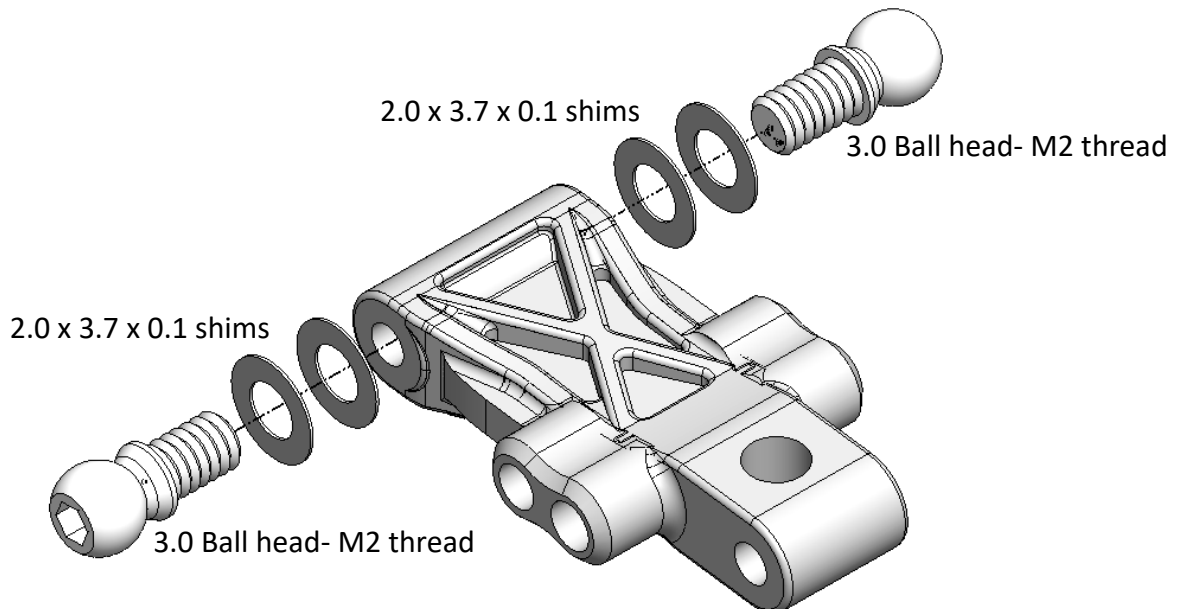
Step 12 – Spur Gear



Step 13 – Spur Gear

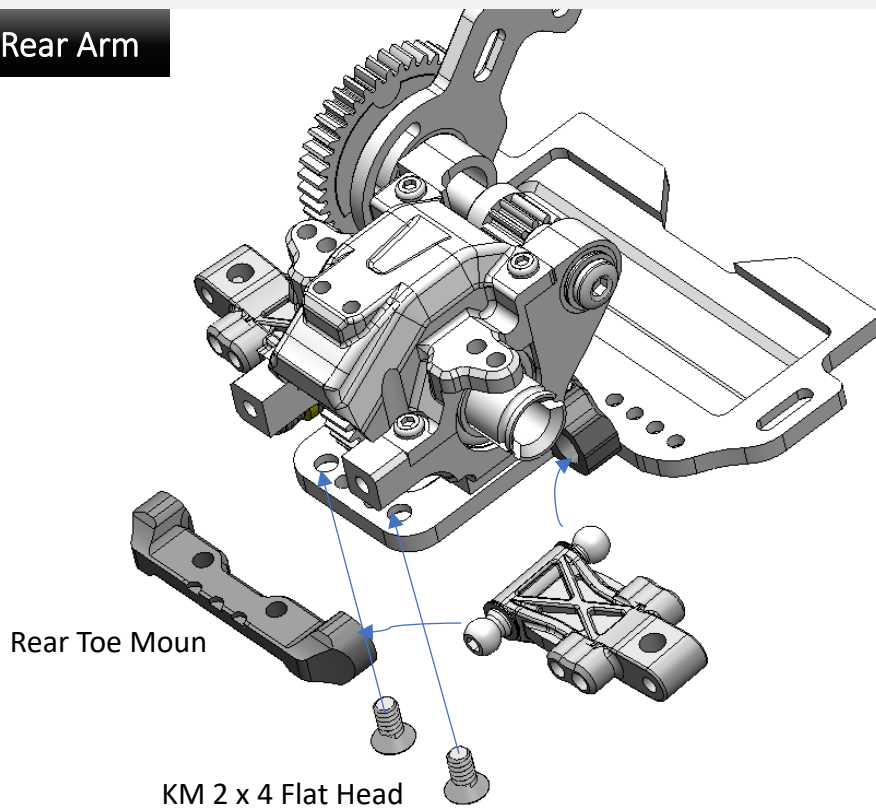


Step 14 – Rear Arm (make 2 sets)

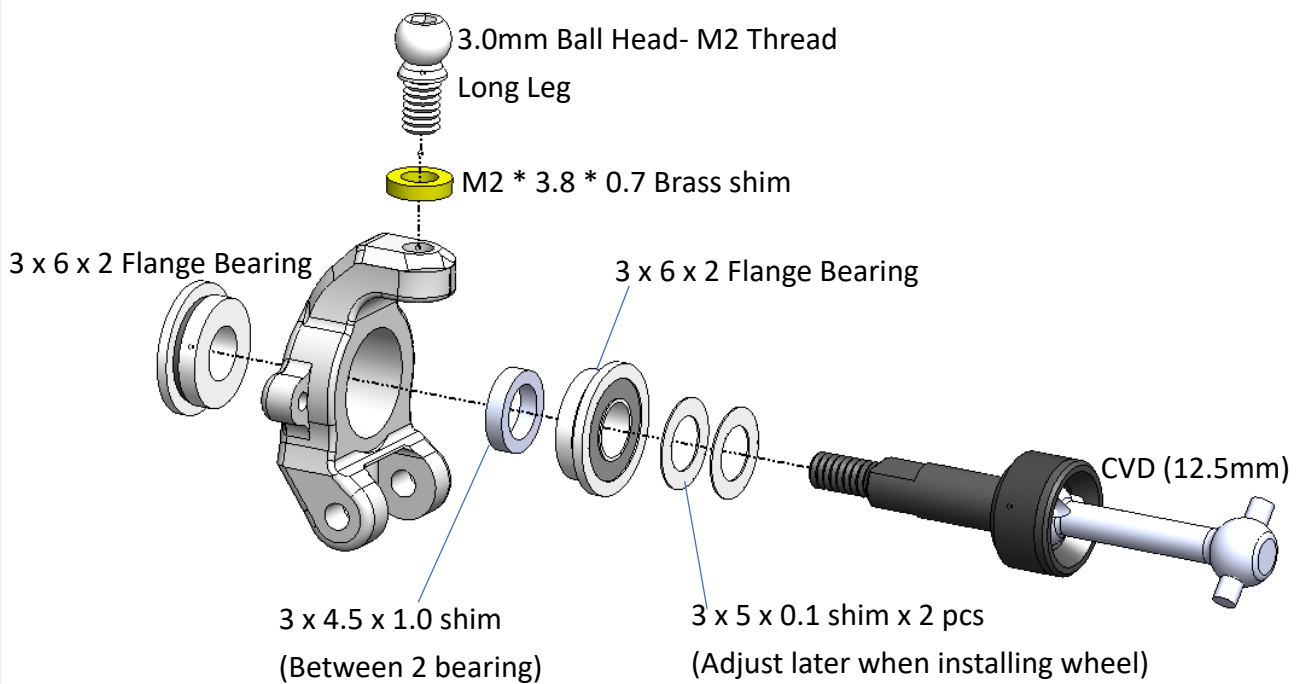


Note: it may need more shims to eliminate the play, we will check it in next step.

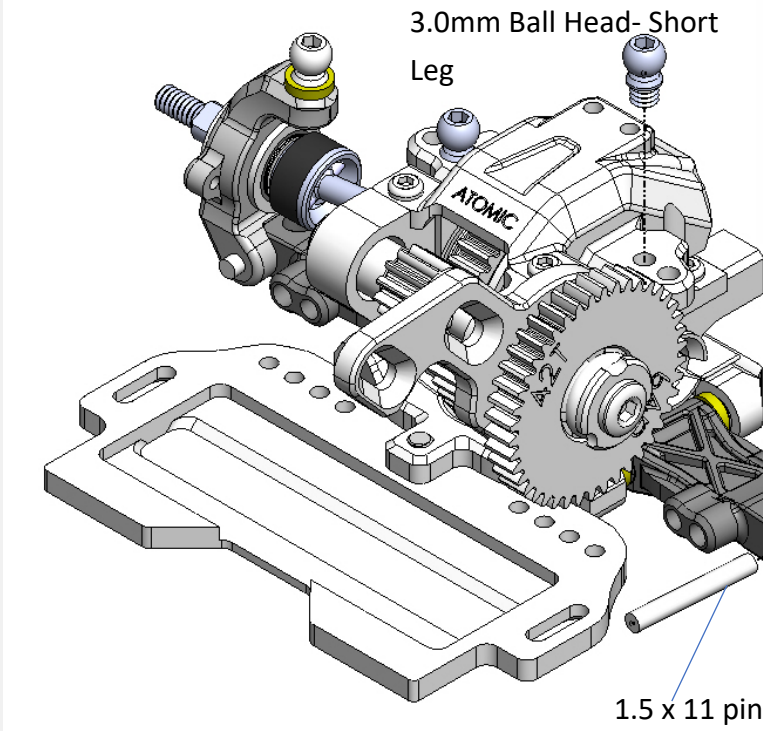
Step 15 – Rear Arm



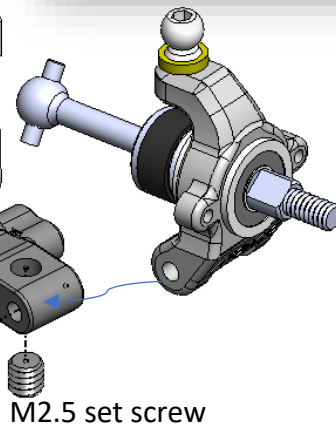
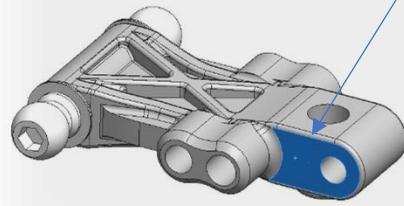
Step 16 – Rear Hub (Open Bag 08)



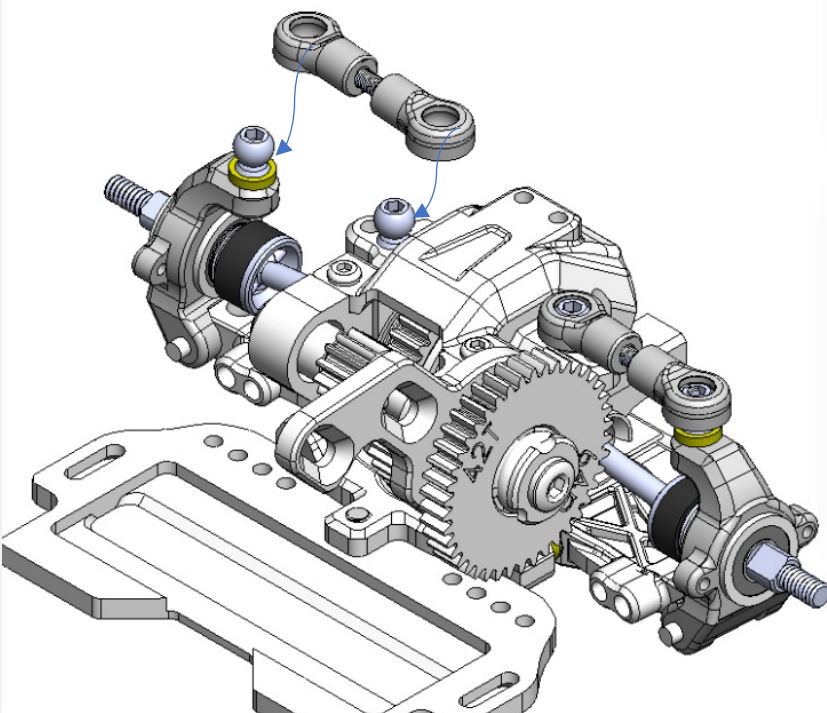
Step 17 – Rear Knuckle



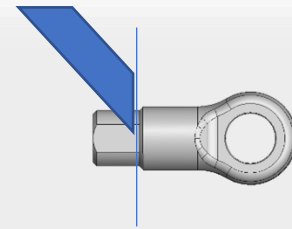
Use sandpaper to sand off little bit this surface if the rear hub not moving freely.



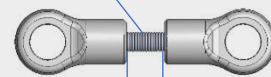
Step 18 – Camber Link



Trim the 3.0 mm Ball Cap (4pcs)



M2 x 8 Set Screw



Around 1.8mm

Step 19 – Front Lower Arm (Open Bag 09)

Front Body Mount

1.5 x 11 pin

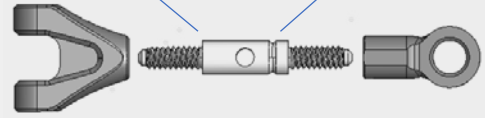
1.6 x 2.5 x 0.3 shim

Lower Arm Mount

KM 2 x 4

Reverse Thread

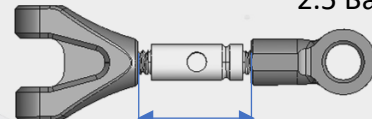
Normal Thread



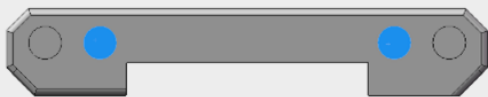
14 mm Turnbuckle

Front Lower Arm

2.5 Ball Cap



7.5 mm



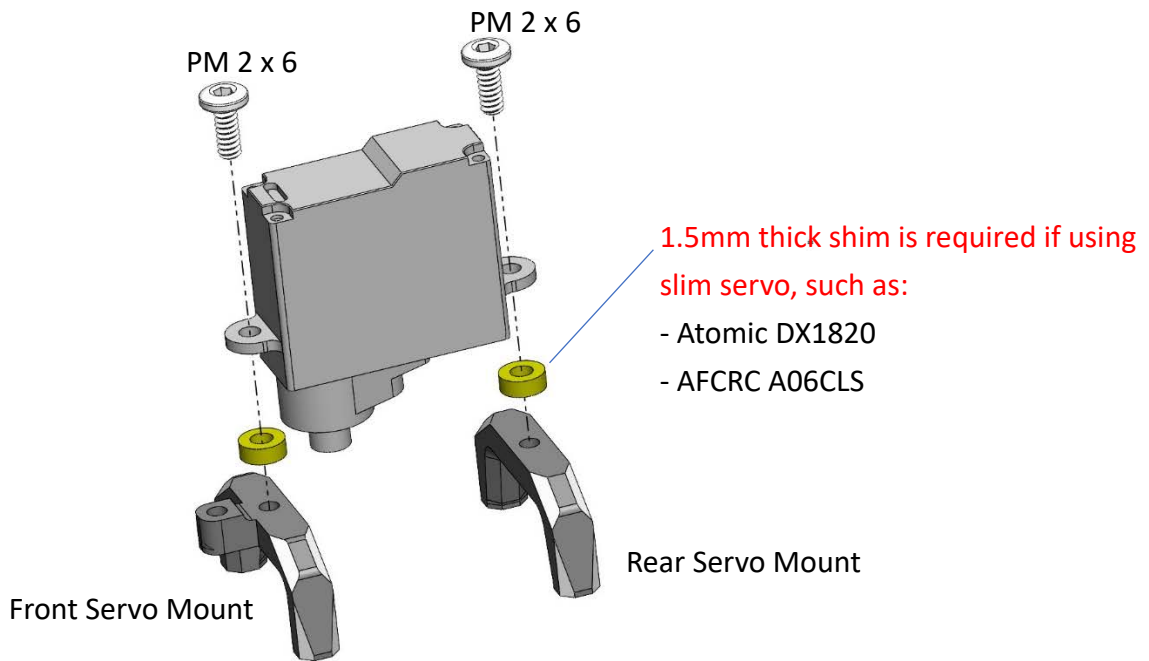
Recommended to use Inner Hole



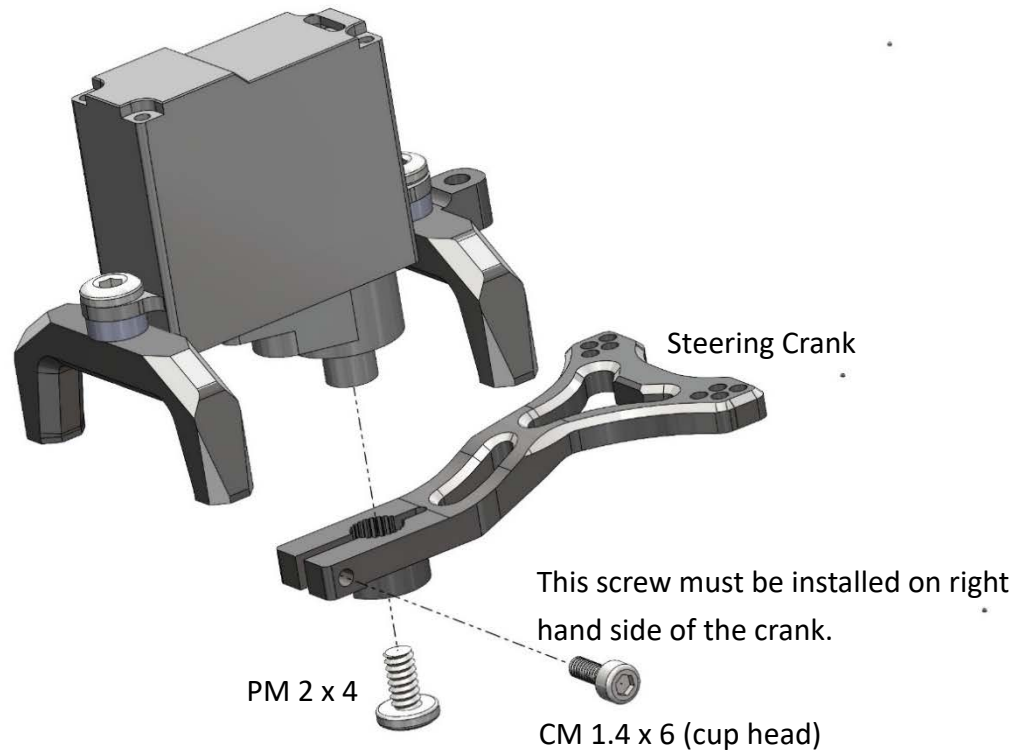
“Video” to show how to smooth and free up ball cap;
please scan the QR code.

Wide Offset – suitable for 1:24 scale body and wheel (22mm)

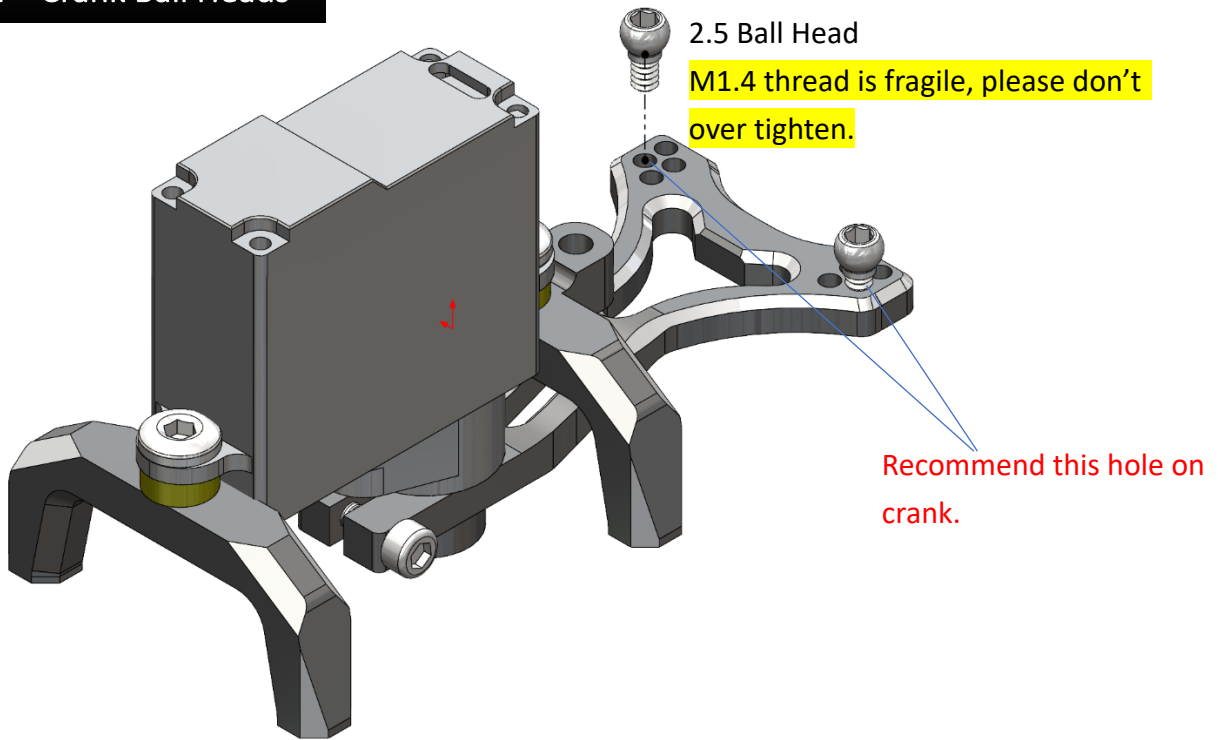
Step 20- Install the Servo (Open Bag 10, 11)



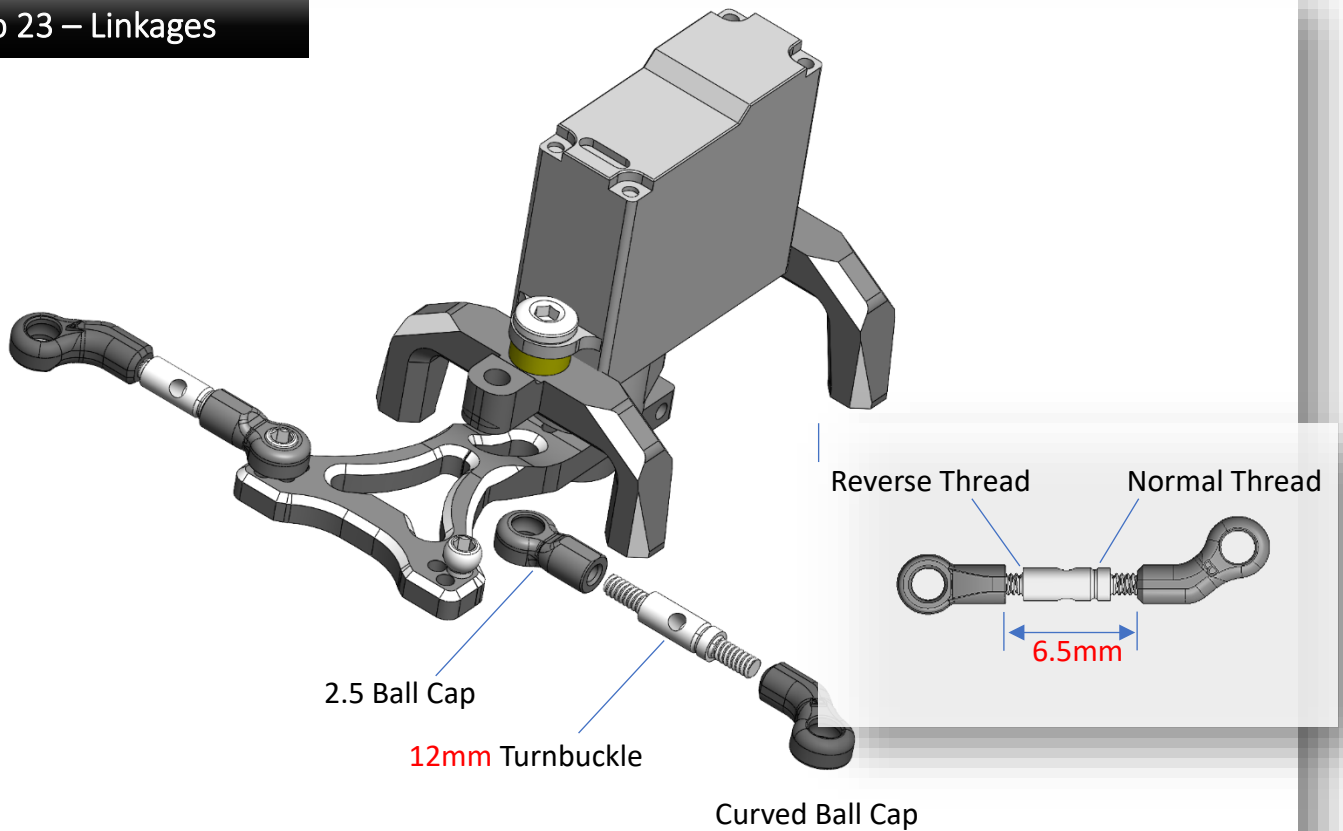
Step 21 – Steering Crank



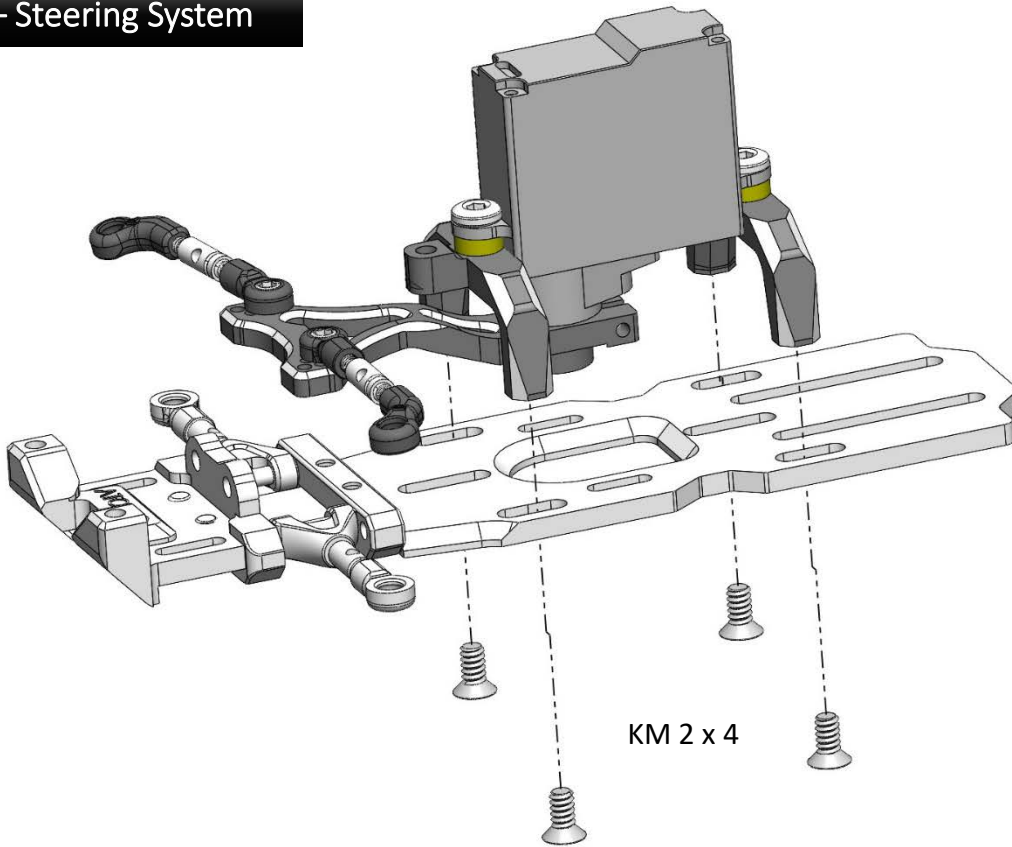
Step 22 – Crank Ball Heads



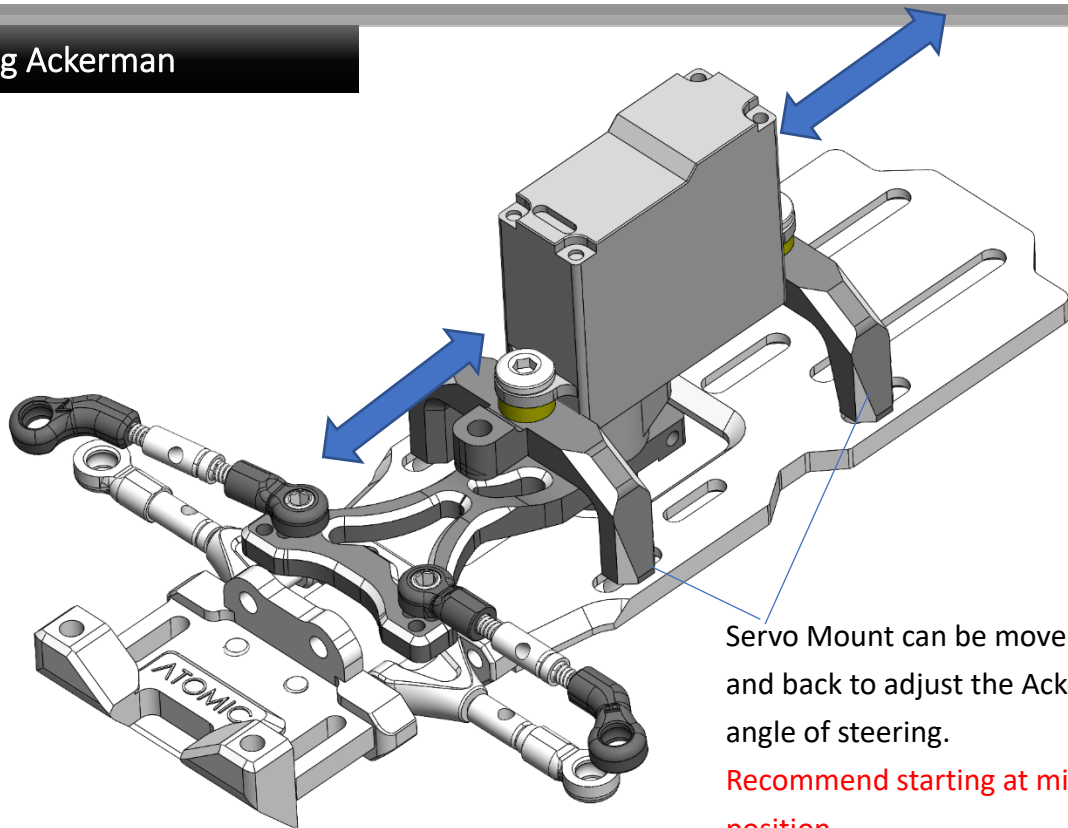
Step 23 – Linkages



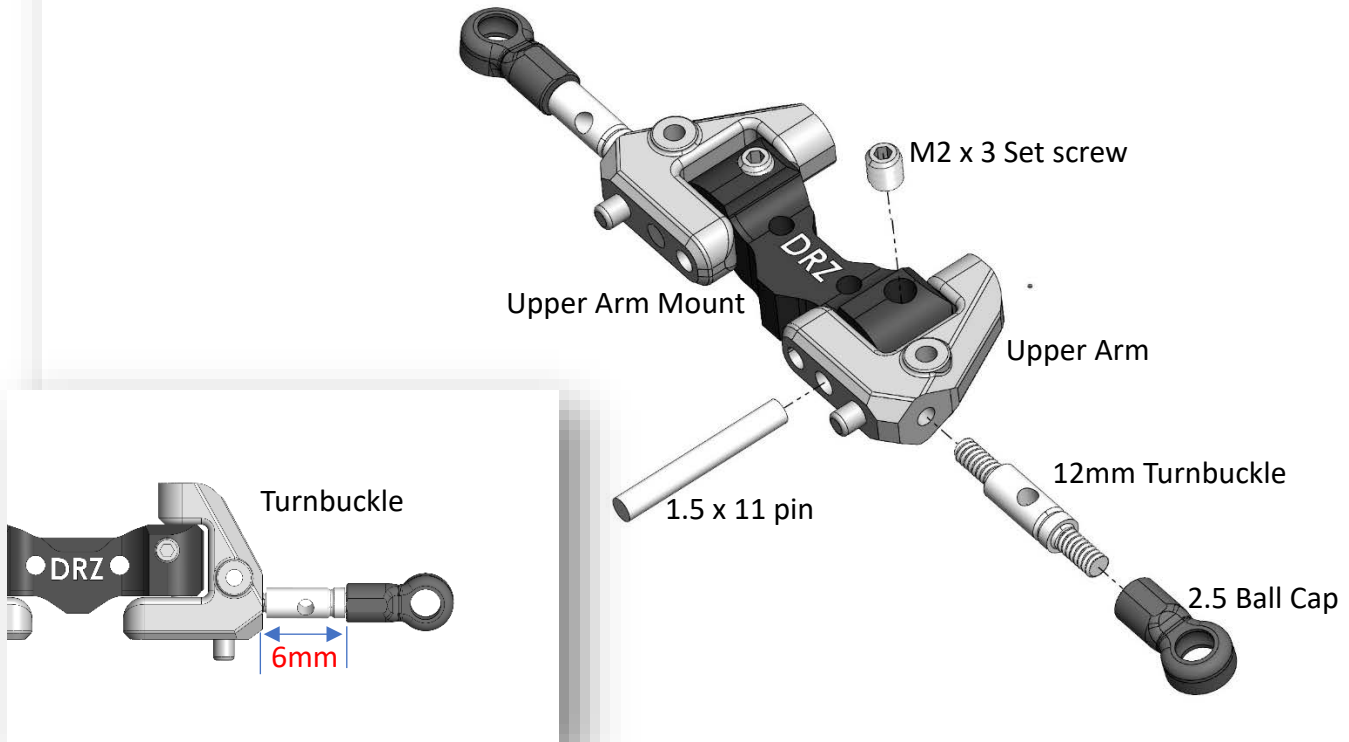
Step 24 – Steering System



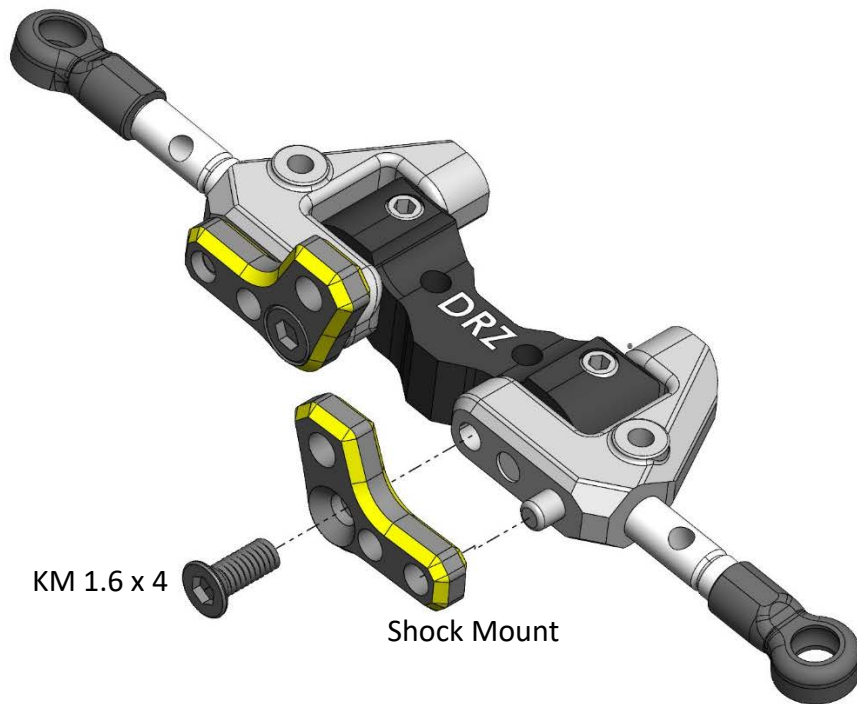
Steering Ackerman



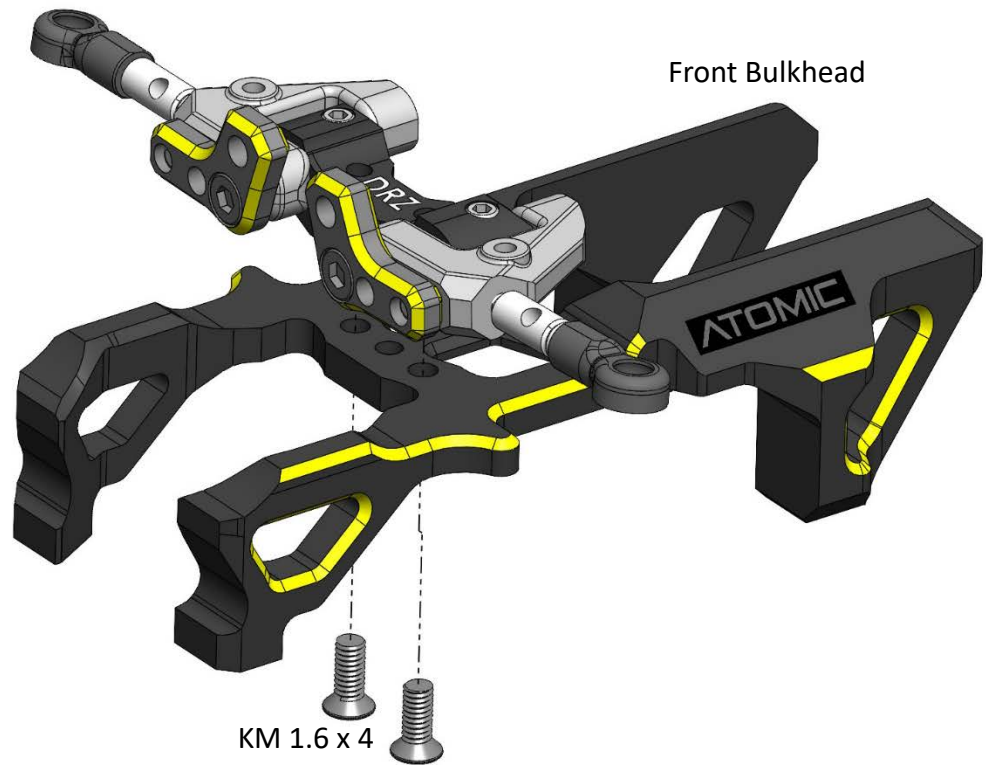
Step 25 – Front Upper Arm



Step 25 – Front Upper Arm



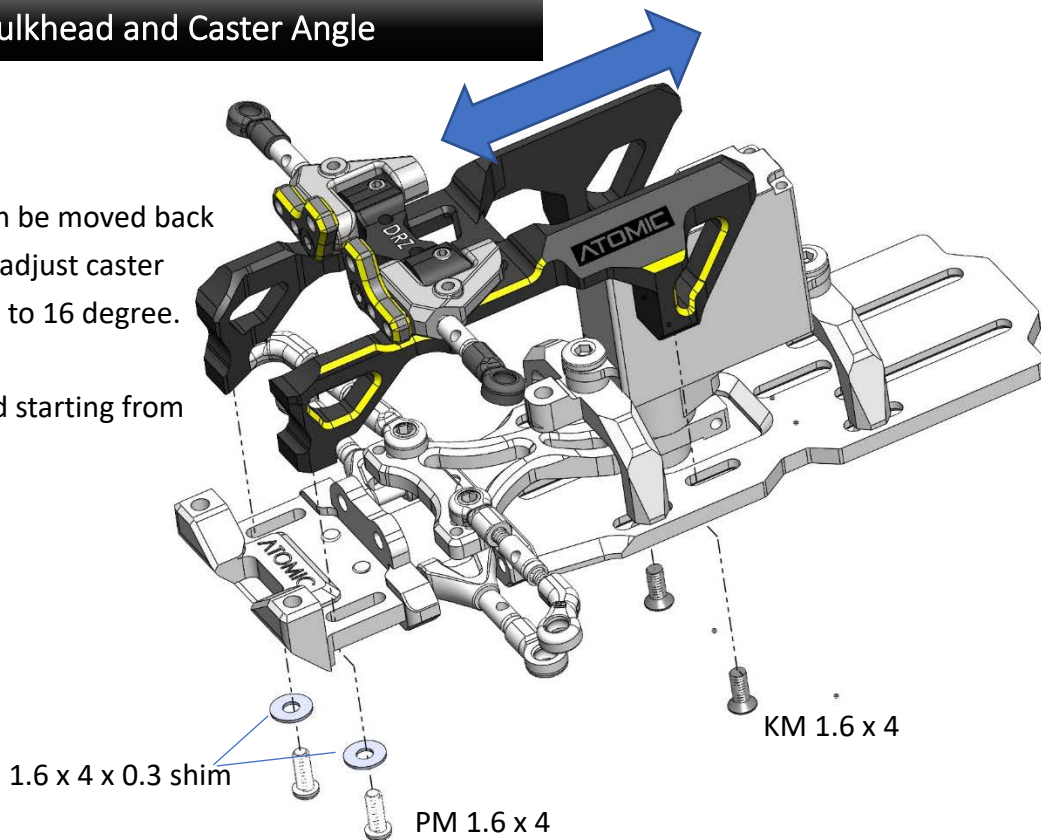
Step 26 – Front Bulkhead



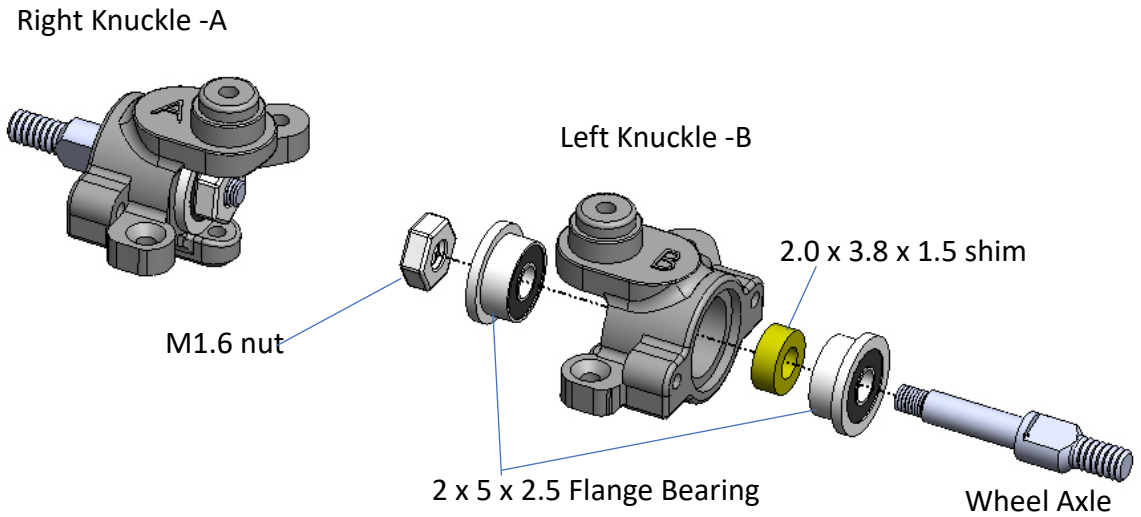
Step 26 – Bulkhead and Caster Angle

Bulkhead can be moved back and forth to adjust caster angle from 0 to 16 degree.

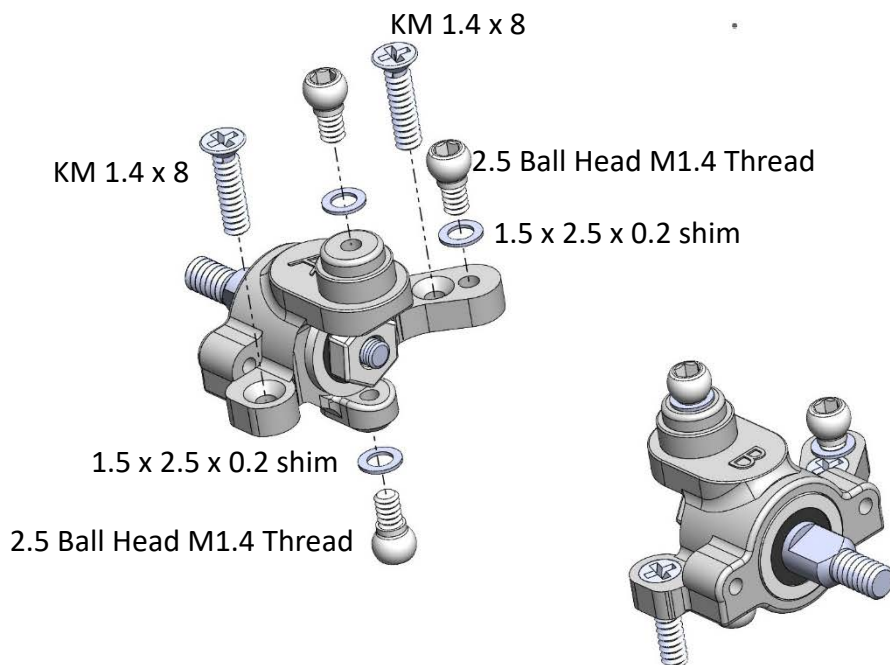
Recommend starting from 8 degree.



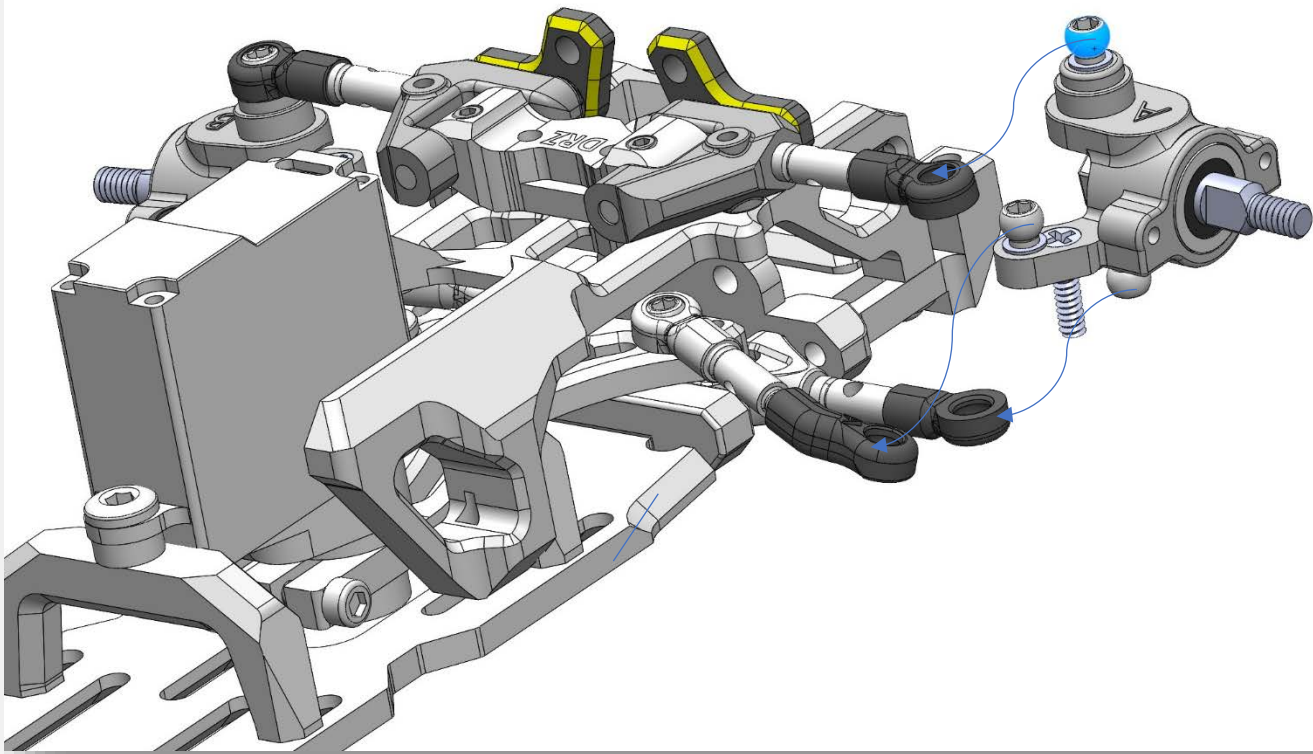
Step 27 – Front Knuckle



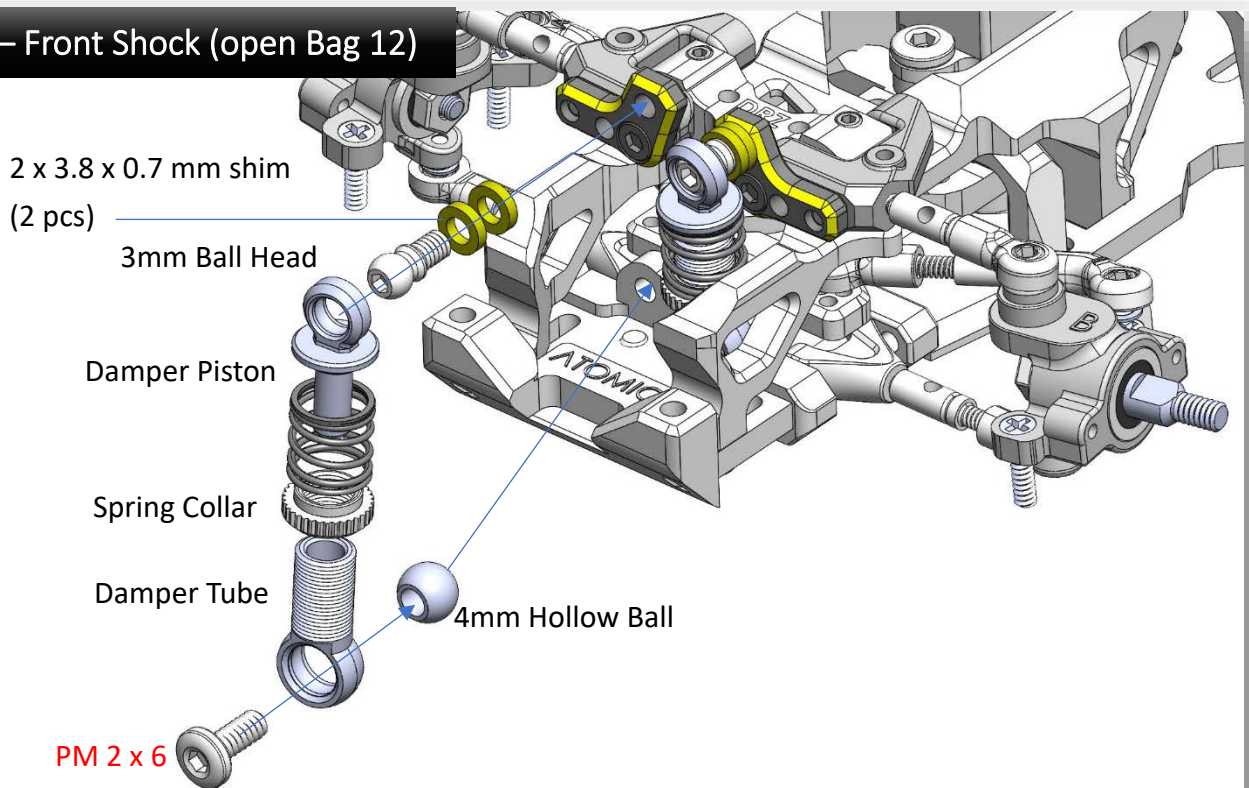
Step 28 – Front Knuckle



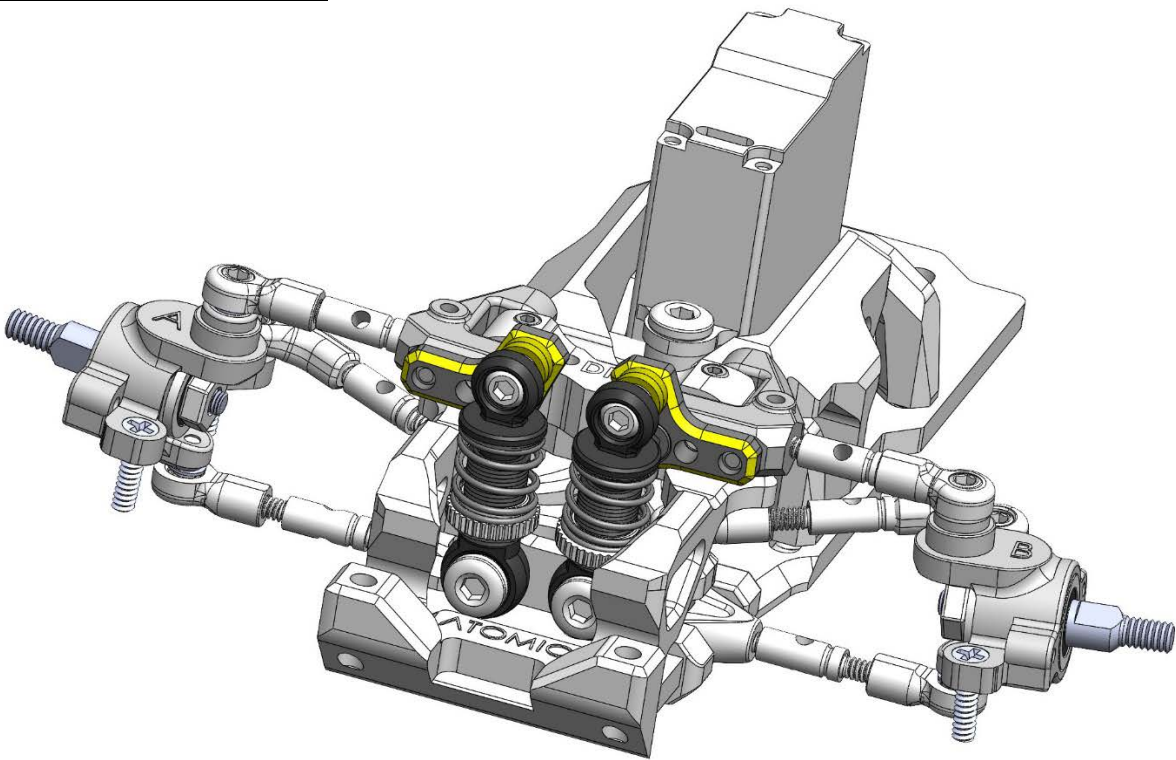
Step 29 – Install Knuckle



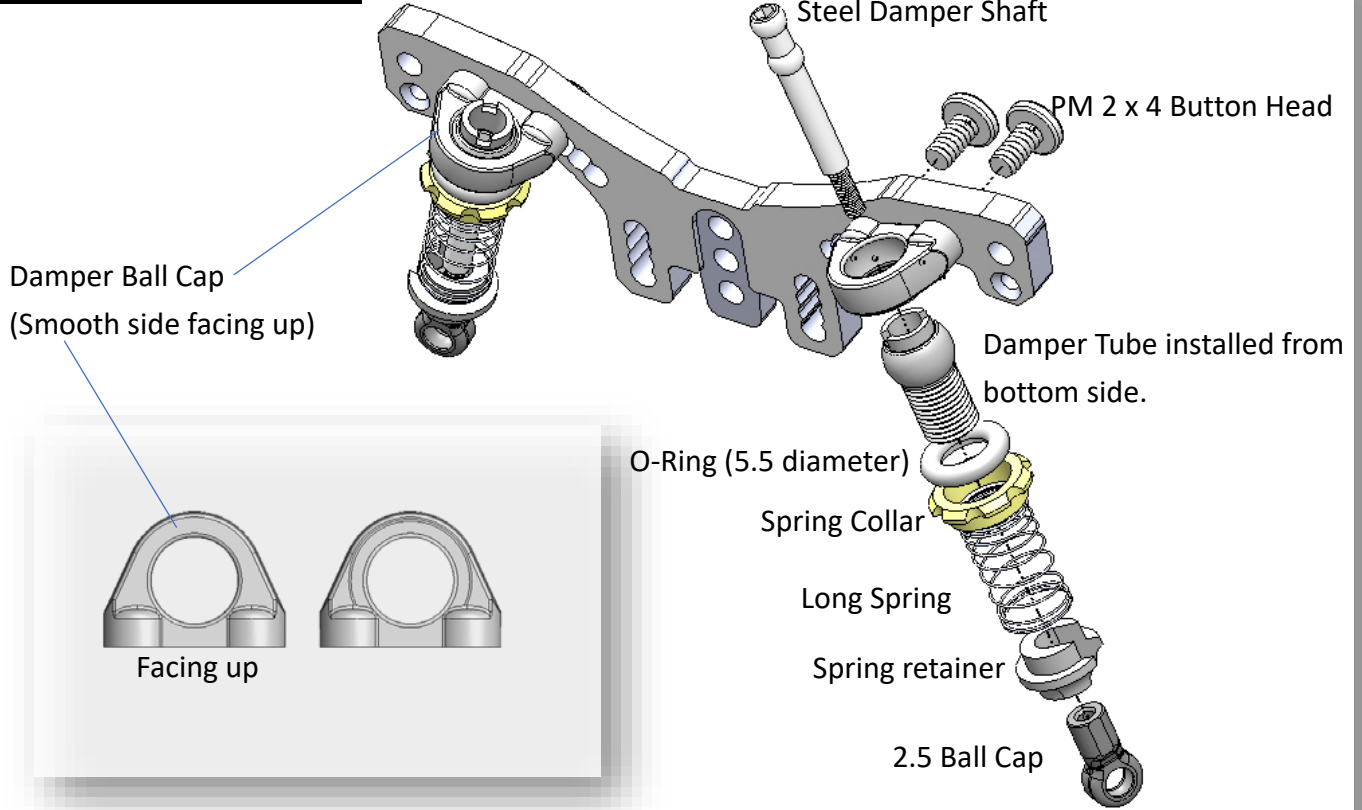
Step 30 – Front Shock (open Bag 12)



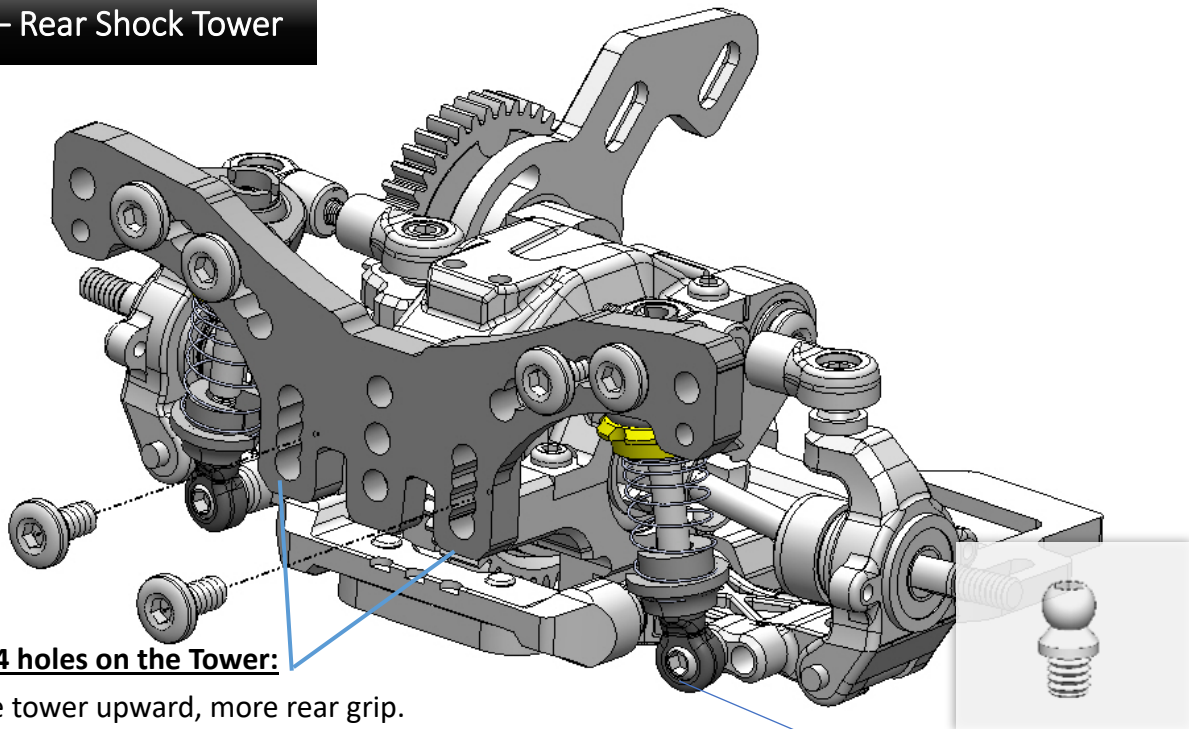
Step 31 – Front Shock



Step 32 – Rear Shock



Step 33 – Rear Shock Tower

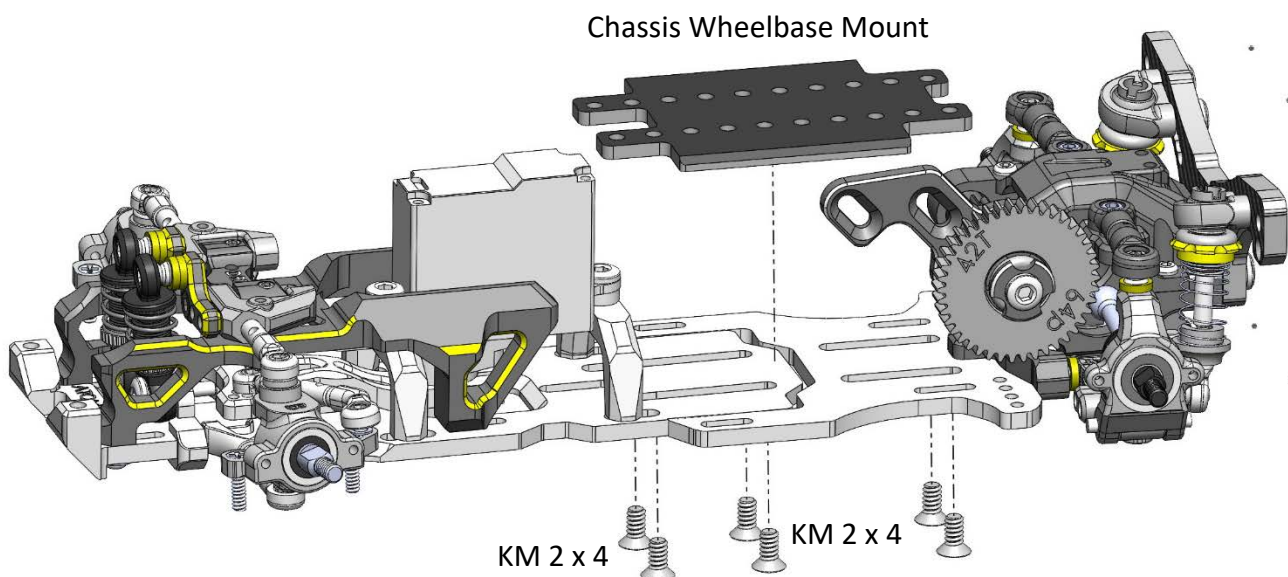


There is 4 holes on the Tower:

- Move tower upward, more rear grip.
- Move tower downward, less rear grip.
- Recommend starting at second hole (count from bottom).

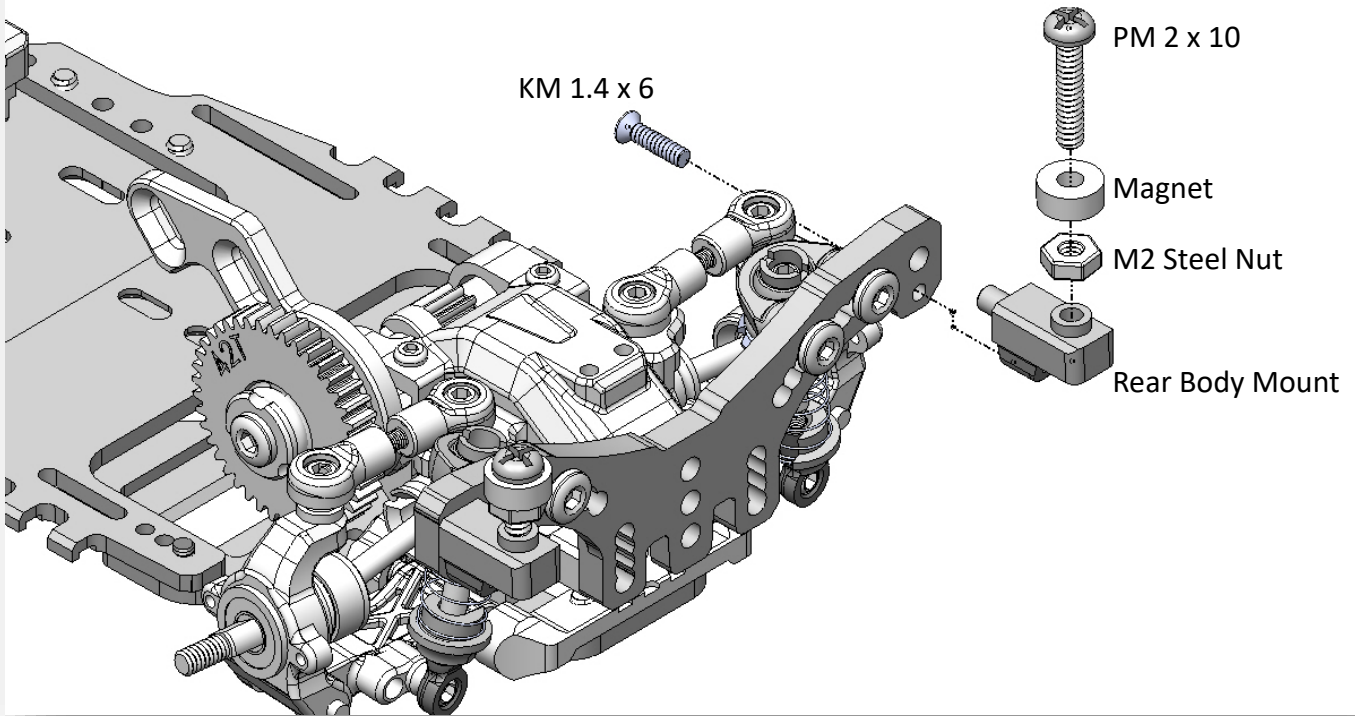
2.5 Ball Head M2 Thread

Step 34 – Chassis Mount

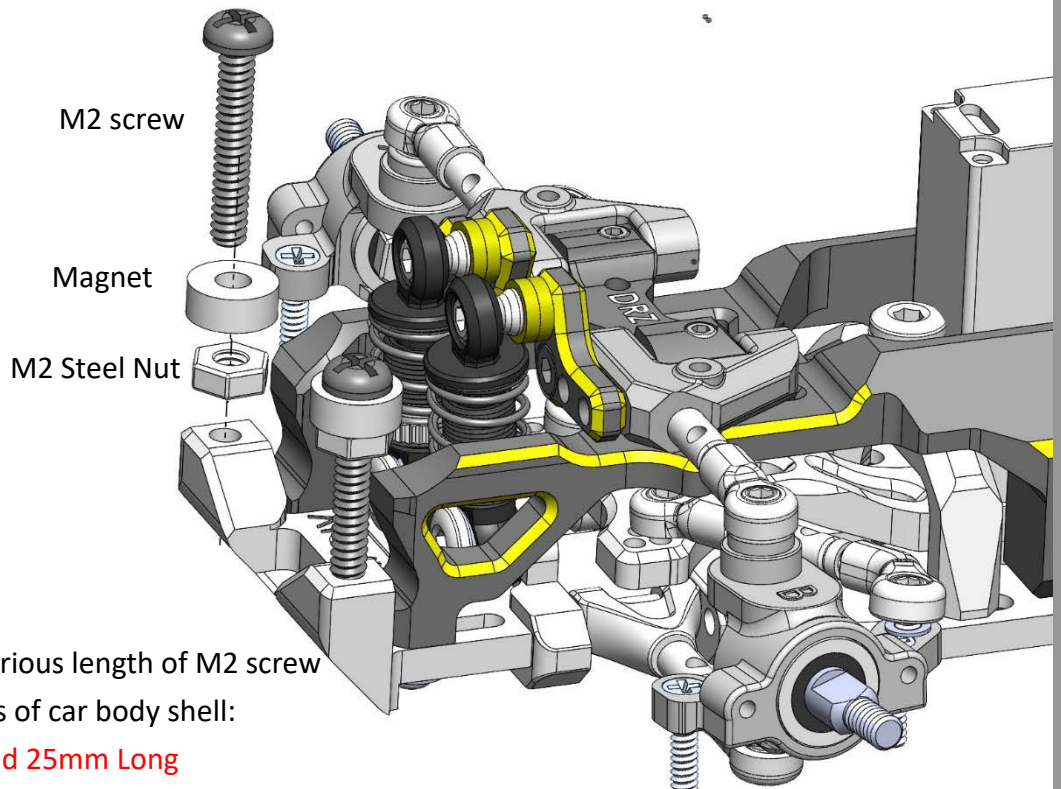


DRZ3 MS wheelbase can be adjusted from 90mm to 120mm

Step 35 – Rear Magnetic Body Mount



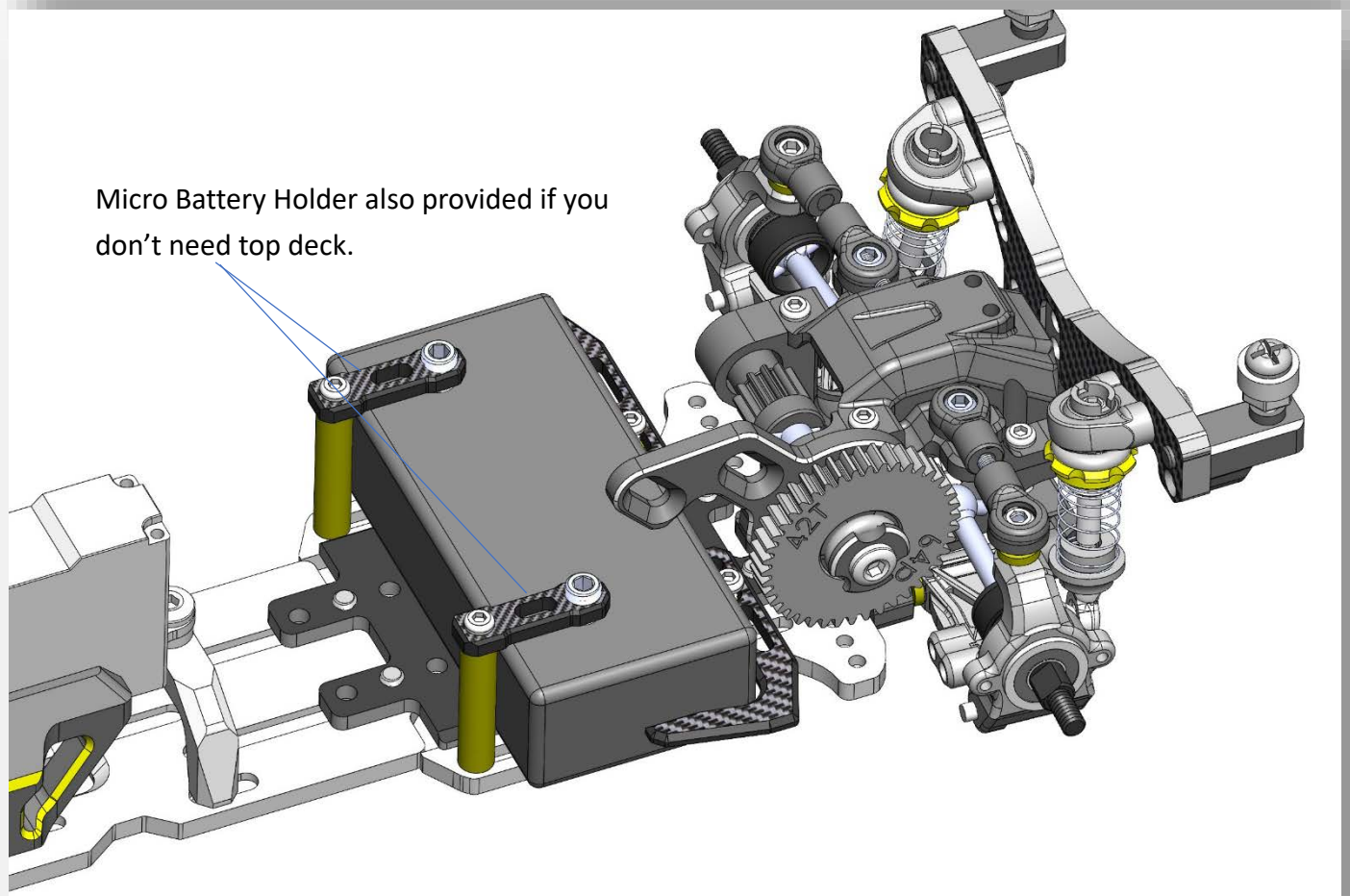
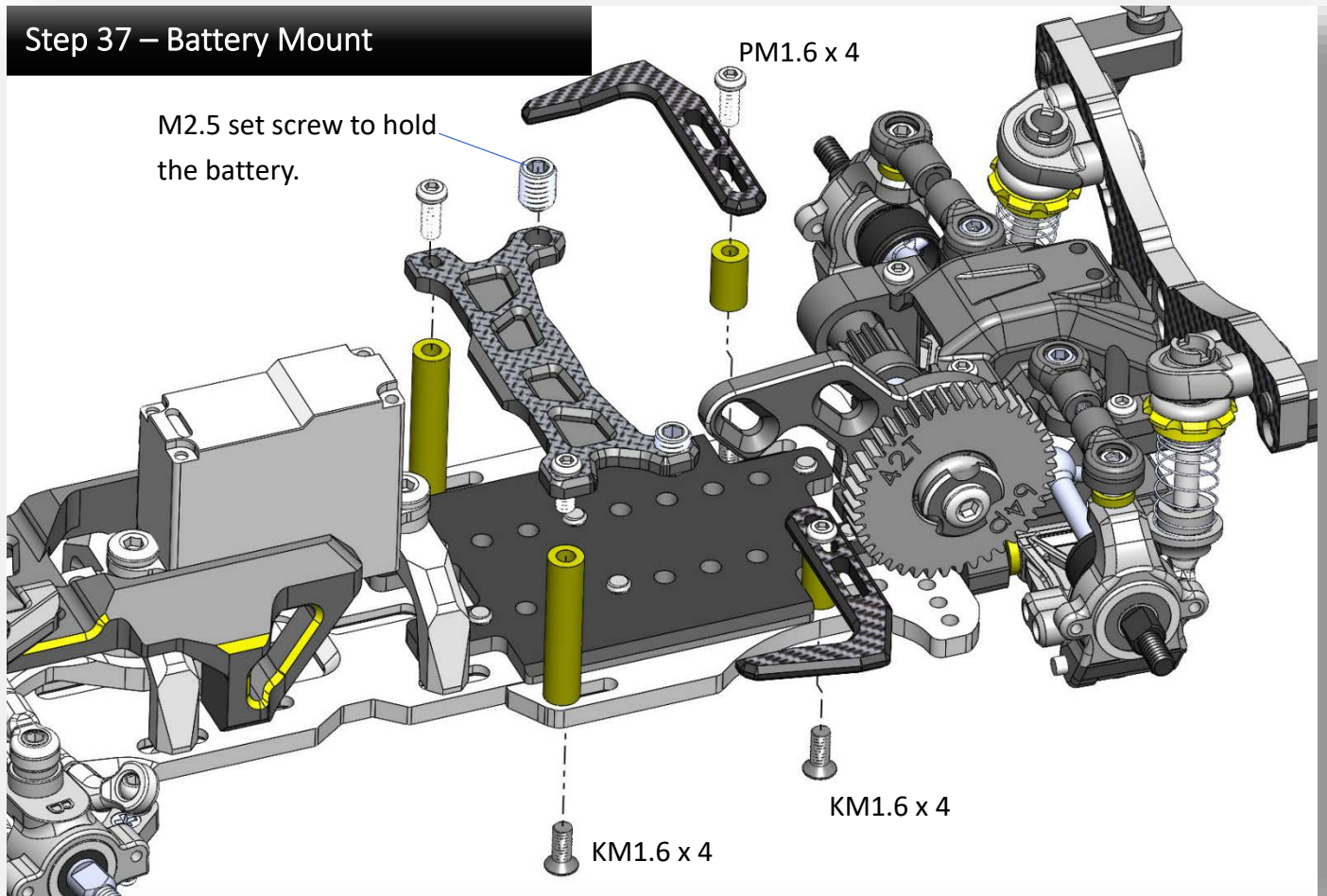
Step 36 – Front Magnetic Body Mount



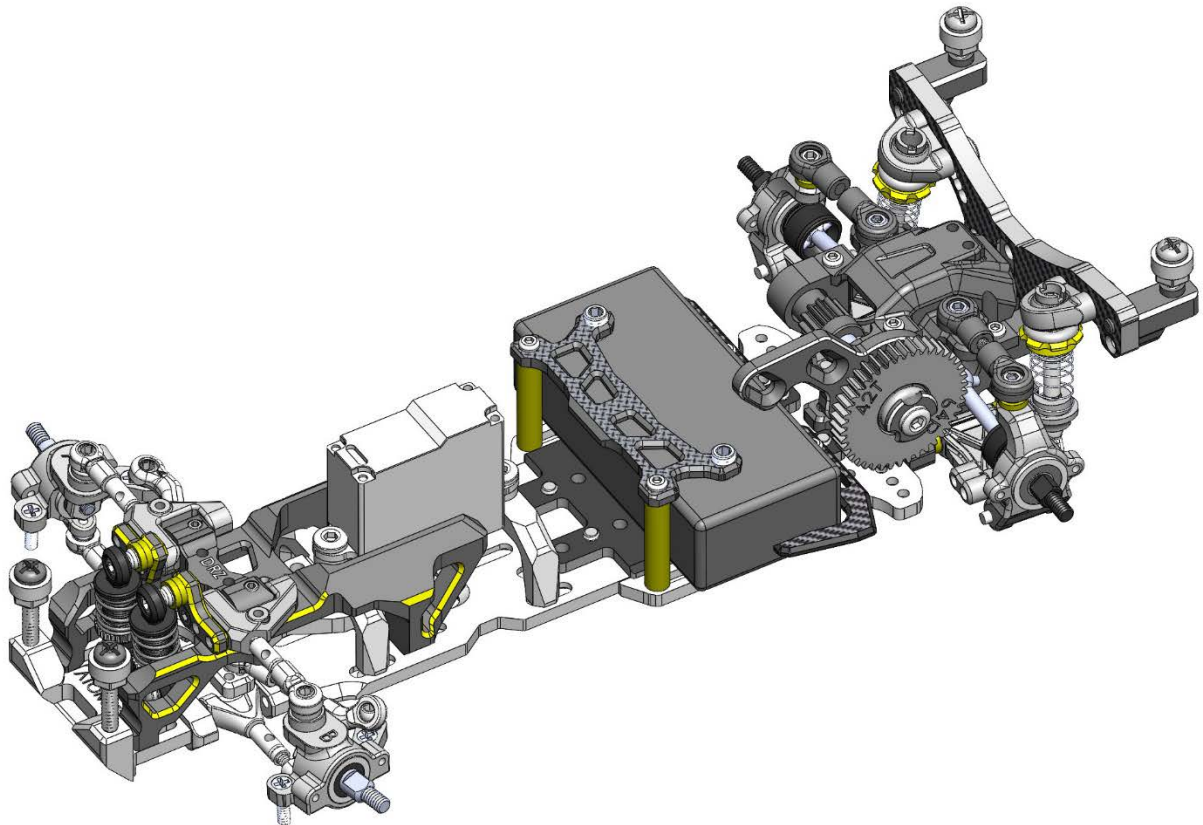
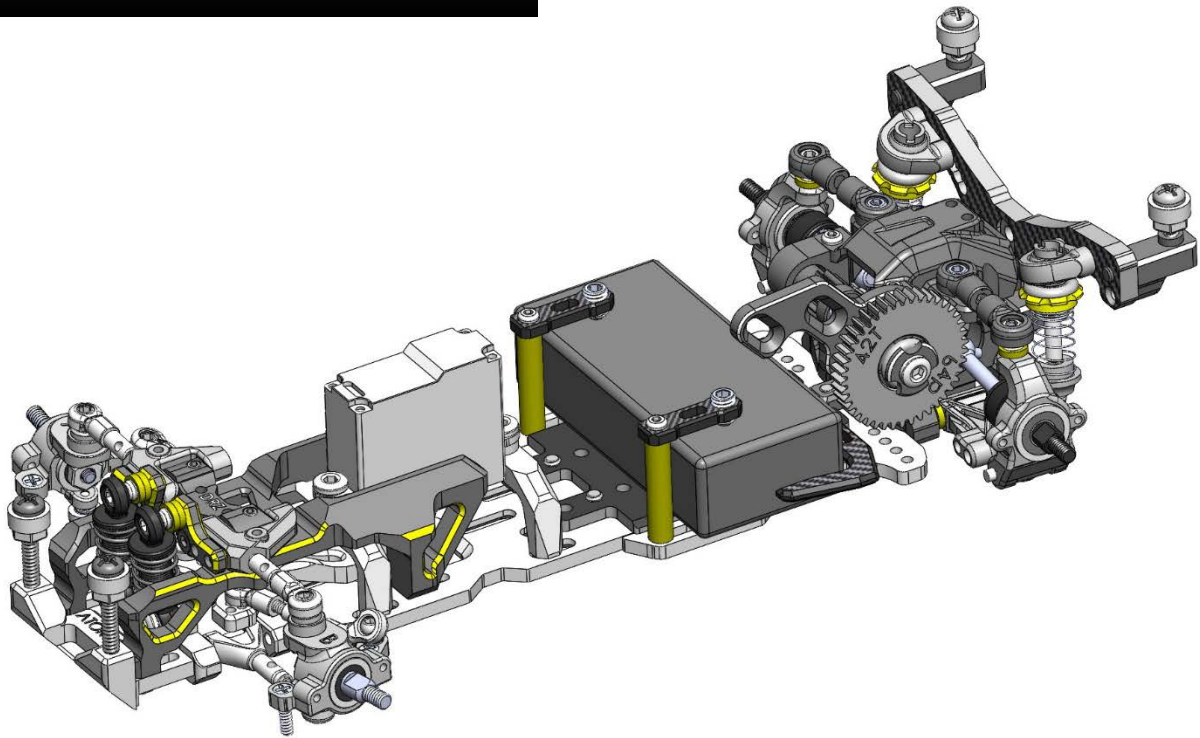
Package come with various length of M2 screw to suite different kinds of car body shell:

- **M2 x 10, 16, 20 and 25mm Long**

Step 37 – Battery Mount



Step 38 – Assembly Finished



DRZ3	Pinion	16	17	18	19	20	21	22	23	24	25
Spur	39	9.75	9.18	8.67	8.21	7.80	7.43	7.09	6.78	6.50	6.24
	40	10.00	9.41	8.89	8.42	8.00	7.62	7.27	6.96	6.67	6.40
	41	10.25	9.65	9.11	8.63	8.20	7.81	7.45	7.13	6.83	6.56
	42	10.50	9.88	9.33	8.84	8.40	8.00	7.64	7.30	7.00	6.72

Gear Ratio Chart (*internal gear ratio is 4.0*):

Optional Parts List:

MRTP-UP10P4	Ball Diff Optional Delrin Drive Cup
DRZUP07	DRZ Option motor pinion set (20-24T)
DRZUP08	DRZ Option spur gear set (39-41T)
DRZV21-UP01	DRZ V2.1 Rear Long Spring Set
DRZ3-UP02	DRZ3 Alu. Rear Body Mount
DRZ3-UP03	DRZ3 Alu. Rear Gear Box Cover
DRZ3-UP04	DRZ3 Alu. Rear Toe Blocks
DRZ3-UP06	DRZ3 Brake Disc (4 set)
DRZ3-UP07	DRZ3 Alu. Rear Upright
DRZ3-UP08	DRZ3 Alu. Front Knuckle
DRZ3-UP09	DRZ3 Alu. Rear Arm (Adjustable)
DRZ3-UP10	DRZ3 Alu. Rear Shock Tower
DRZ3-UP12	DRZ3 Rear ESC Mount
DRZ3-UP16	DRZ3 Alu. Spur Gear Adaptor
DRZ3-UP17	Motor Heat Sink (ESC mount)
DRZ3-UP18	MS Front Spring Set

Spare Parts List:

DRZ3-01	Ball Diff Pressure Plate and hardware
DRZ3-02	DRZ3 Rear Gear Box Cover
DRZ3-03	DRZ3 Rear Main Shaft and accessories
DRZ3-04	DRZ3 Rear Arm
DRZ3-05	DRZ3 Rear Drive Shaft (CVD 12.5mm)
DRZ3-06	DRZ3 Rear Upright
DRZ3-07	DRZ3 Front Lower Arm
DRZ3-08	12mm Steel Turnbuckle - 2pcs
DRZ3-09	14mm Steel Turnbuckle - 2pcs
DRZ3-10	DRZ3 MP Steering Crank and Servo Mount
DRZ3-11	DRZ3 MP Upper Arm Spacer - 10pcs
DRZ3-12	DRZ3 MP Upper arm and Bulkhead
DRZ3-13	DRZ3 MP Caster Spacer - 4pcs
DRZ3-14	DRZ3 Front Knuckle
DRZ3-15	DRZ3 Front Wheel Axle
DRZ3-16	Bearing (2*5*2.5 Flanged)
DRZ3-17	DRZ3 Body Magnet- 4pcs
DRZ3-18	DRZ3 MP Damper Tube
DRZ3-19	DRZ3 Battery Mount O-Ring 4 pcs
DRZ3-20	KM / PM 1.6 Screw Set
DRZ3-21	CM 1.4 / 1.6 Screw Set
DRZ3-22	PM / KM 2.0 screws Set
DRZ3-23	DRZ3 Ball Caps Set
DRZ3-24	DRZ3 Ball Heads Set
DRZ3-25	Wheel, Bearing, Axle Shims

please join our Facebook Group: experienced users are here to help.

[Atomic DRZ drift society | Facebook](#)