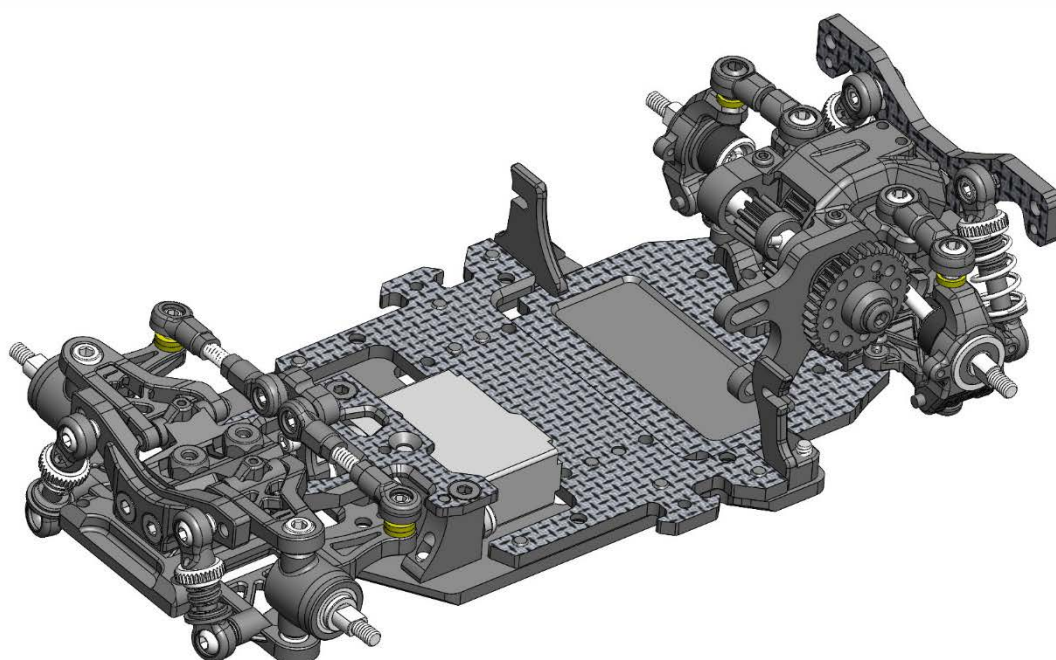
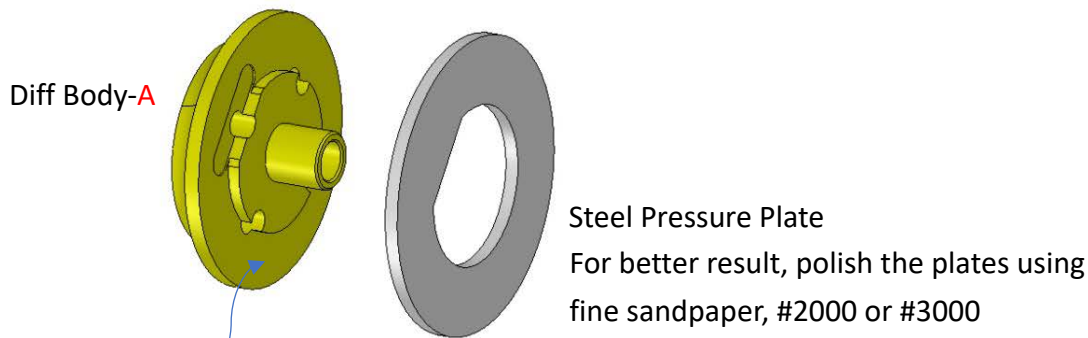


# MRTEVO

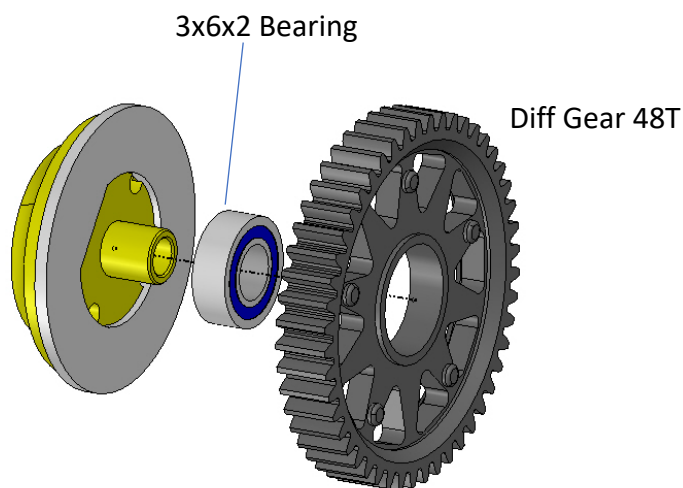


### Step 01 – Ball Diff (open Bag 01-05)

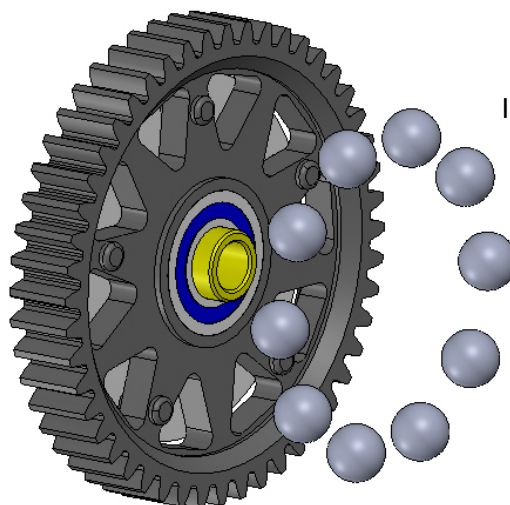


Apply Ball Diff Grease to the surface, as sticky agent to hold the pressure plate in place.

### Step 02 – Diff Gear



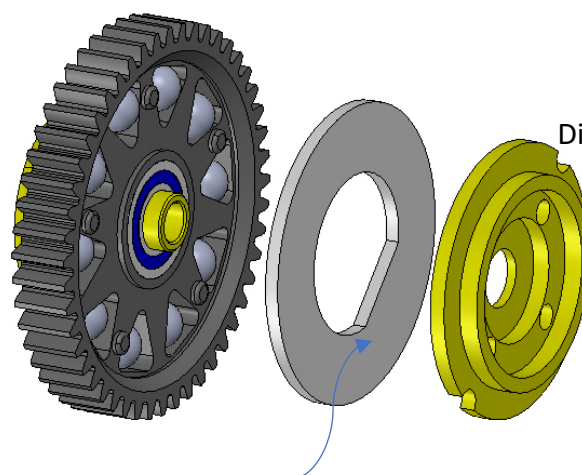
### Step 03 – Diff Balls



Insert 2.381 Balls to the Ring.

- 1- Apply Ball Diff Grease to your hand palm.
- 2- Then put all the balls on palm.
- 3- Rub the balls with finger to make sure the grease is evenly applied on ball surface.
- 4- Put the balls in the gear ring.

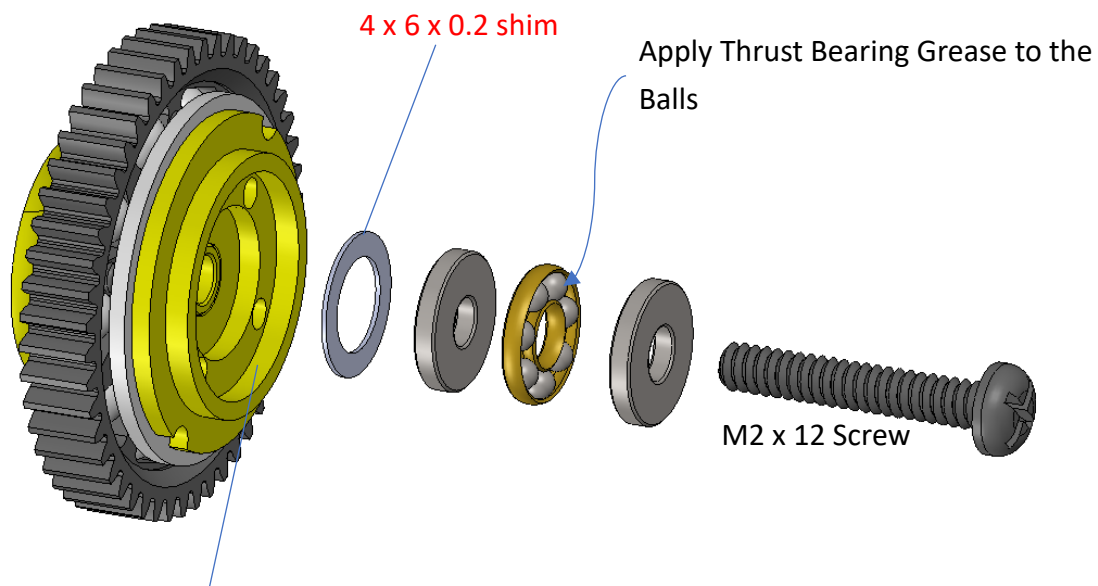
### Step 04 – Fix Pressure Plate



Diff Body-B

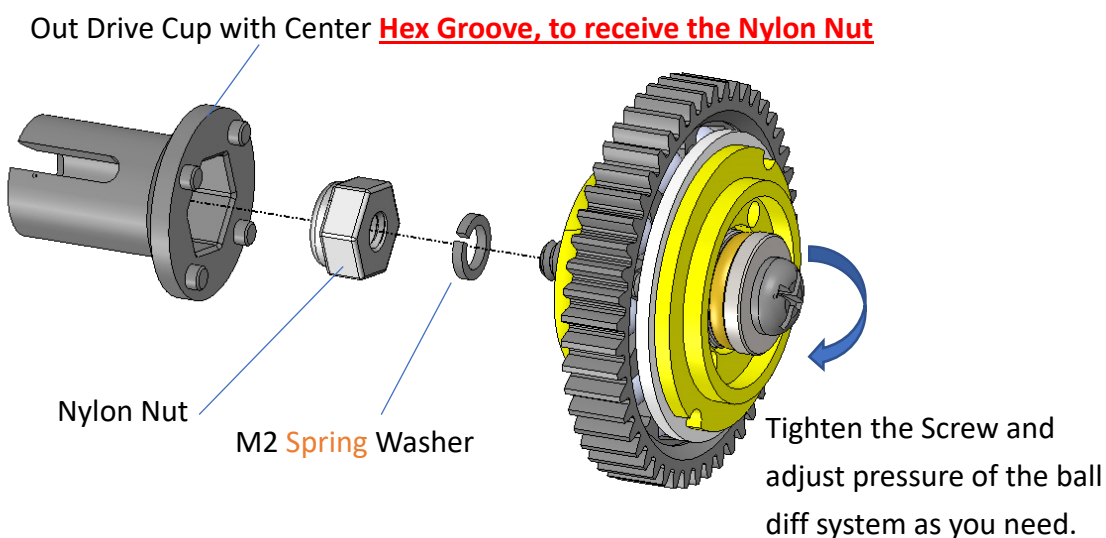
Apply Ball Diff Grease to the surface, as sticky agent to hold the pressure plate in place.

### Step 05 – Thrust Bearing

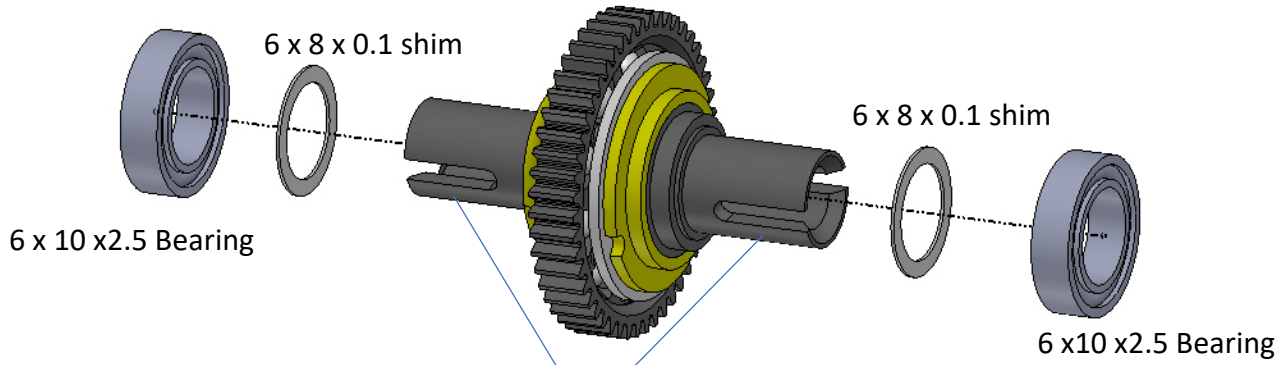


\*\*\* Note the orientation of the parts, Thrust Bearing must be fixed on the Diff Body - B.

### Step 06 – Spring Washer

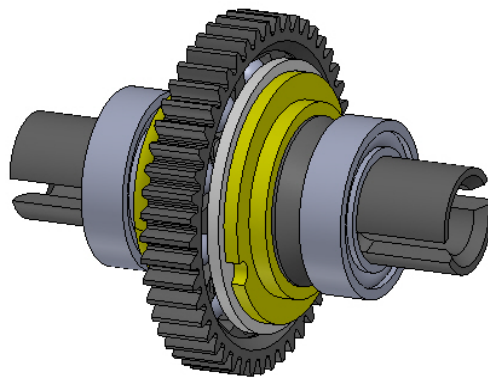


### Step 07 – Fix Bearing

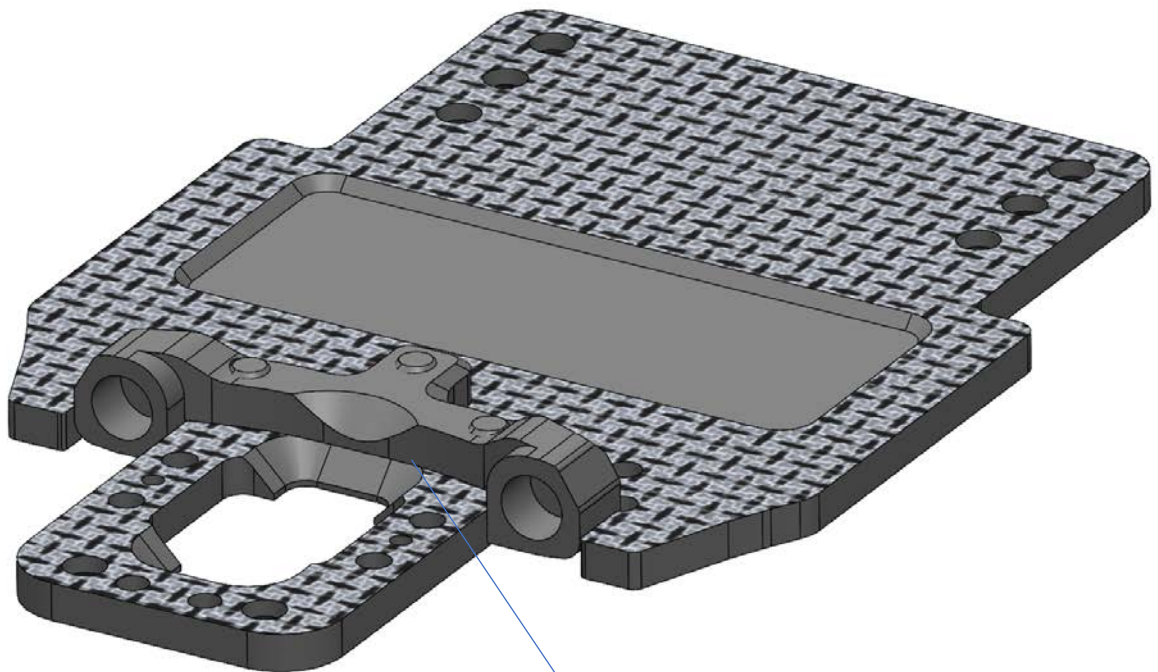
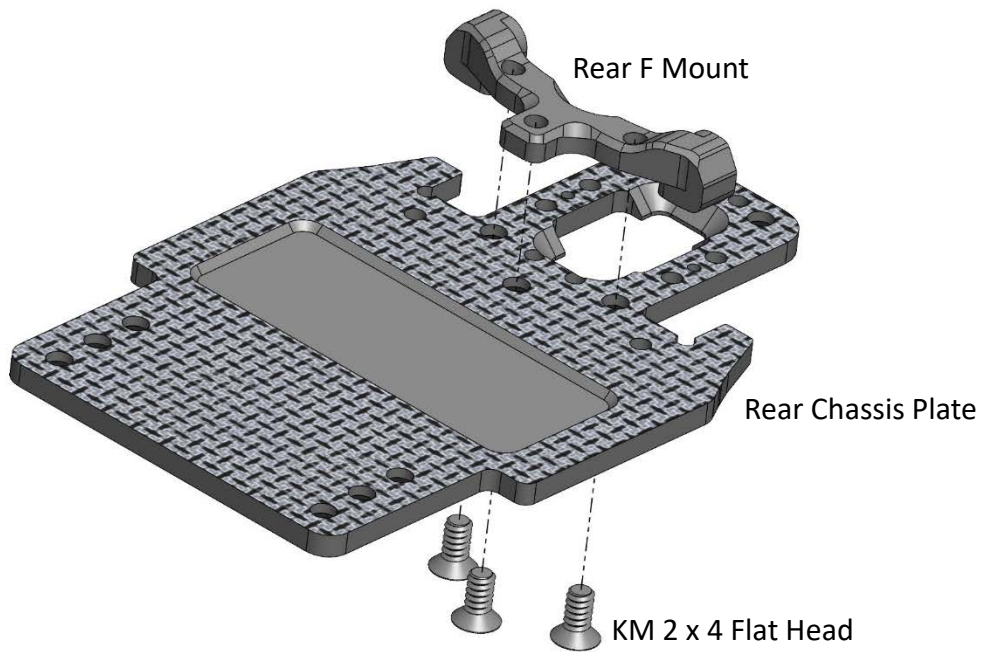


Make sure all the 4 legs of the drive cup are fully fitted to the metal hub.

### Ball Diff Ready

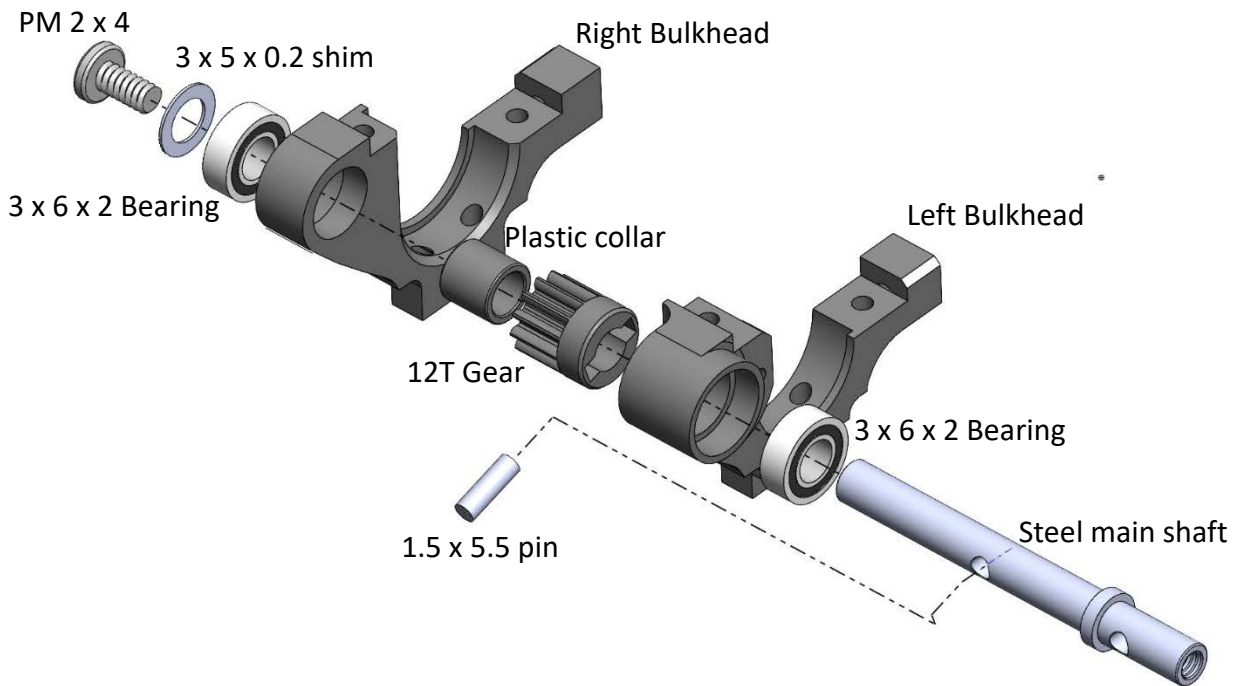


Step 08 – Rear Arm Mount (open Bag 06 and 07)

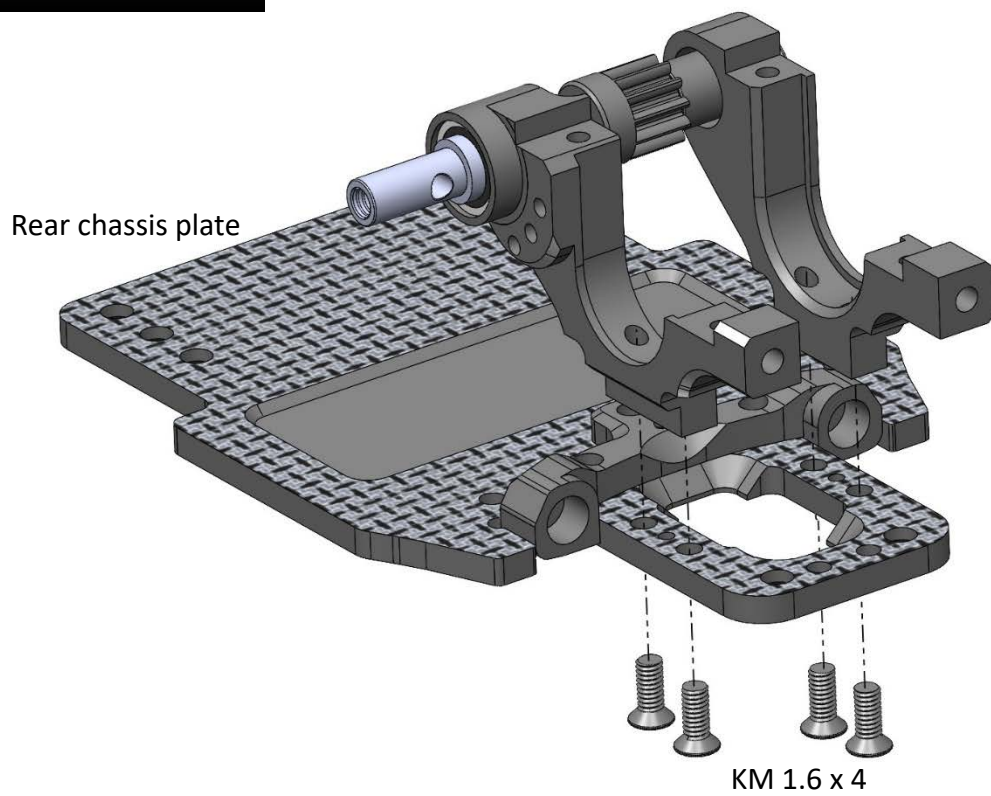


Make sure the arm mount is fully sitting on the chassis without gap. Otherwise, this mount may touch the ball diff in later step of installation.

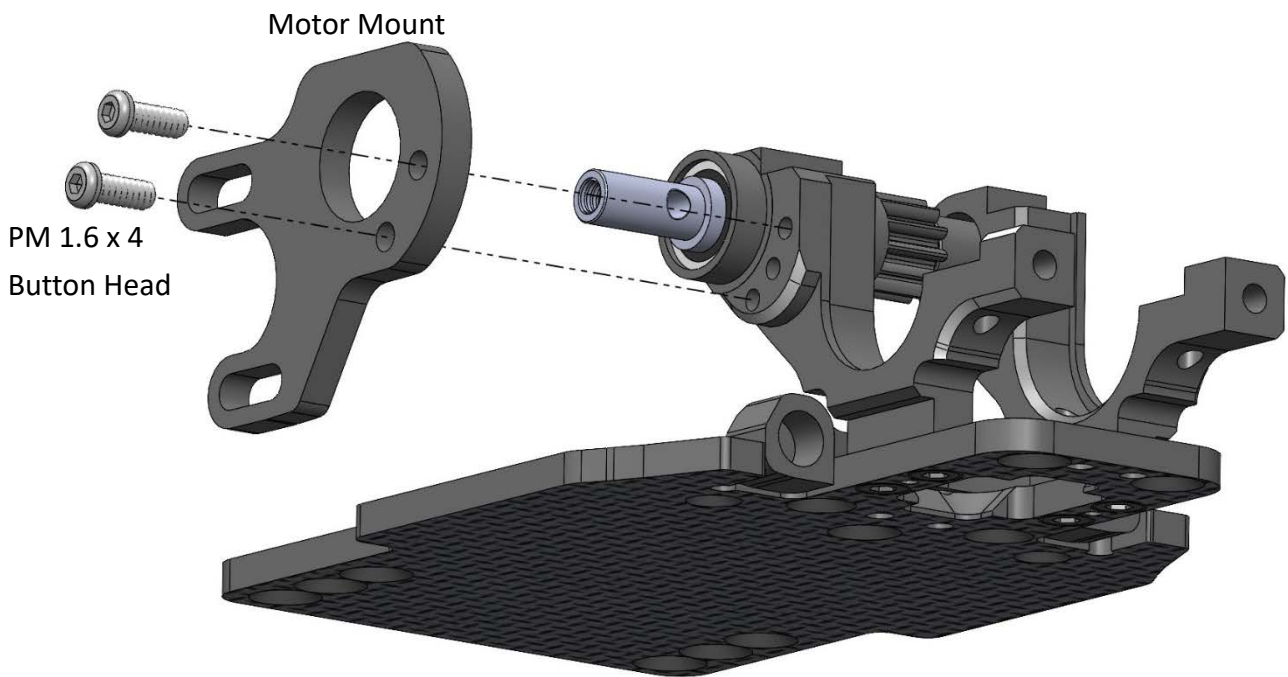
### Step 09 – Rear Bulkhead



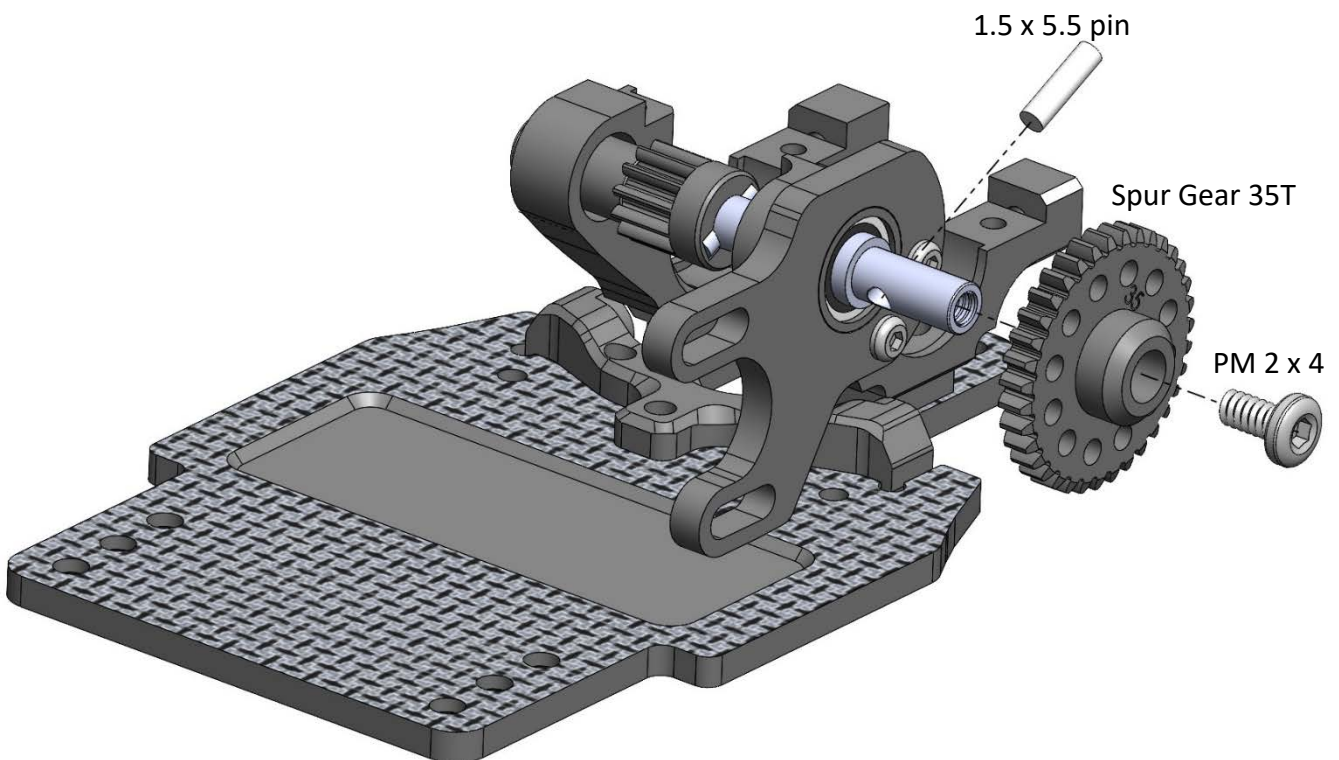
### Step 10 – Rear Bulkhead



### Step 11 – Motor Mount

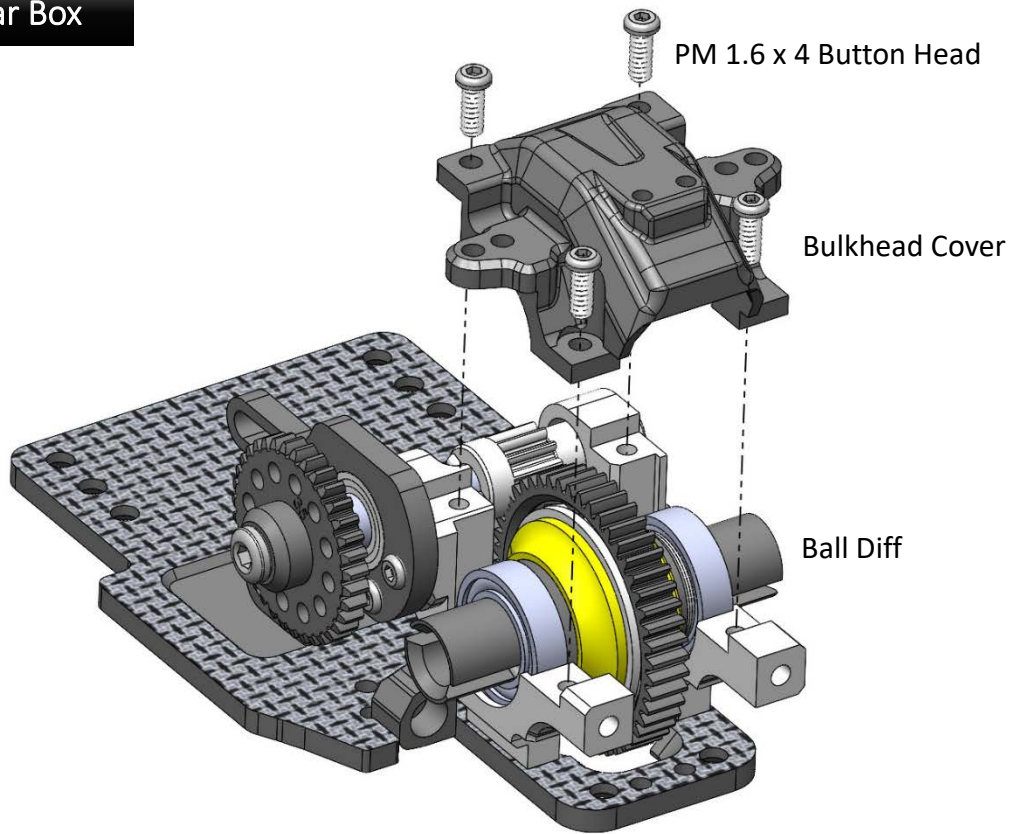


### Step 12 – Spur Gear

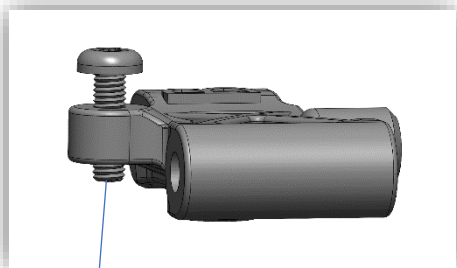
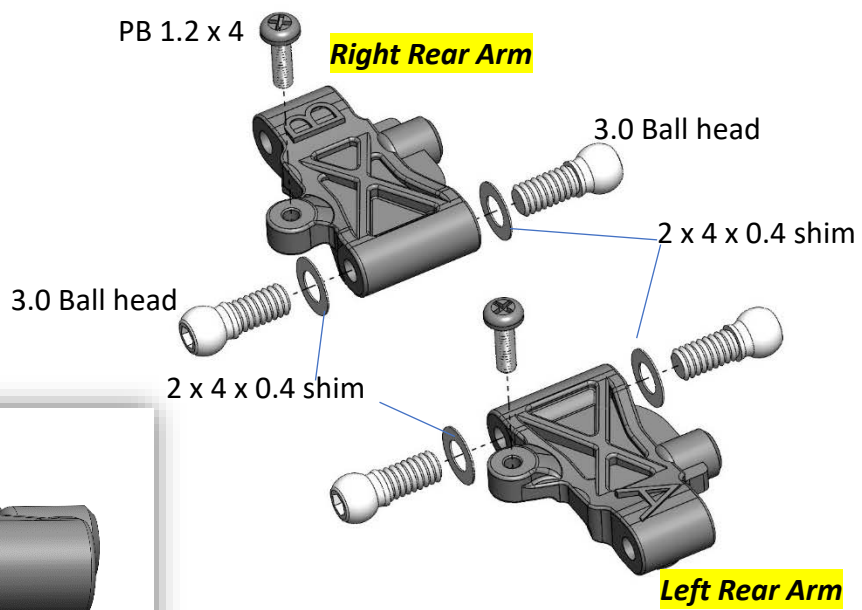




### Step 13 – Gear Box

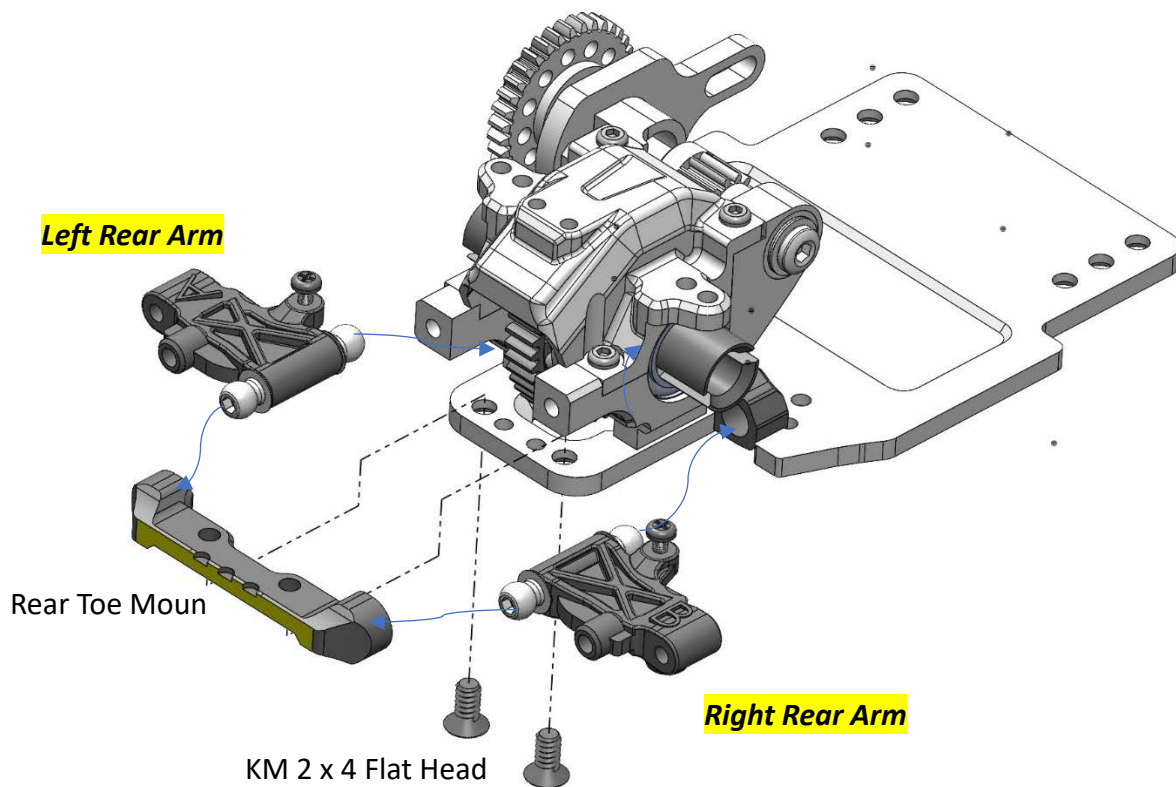


### Step 14 – Rear Arms

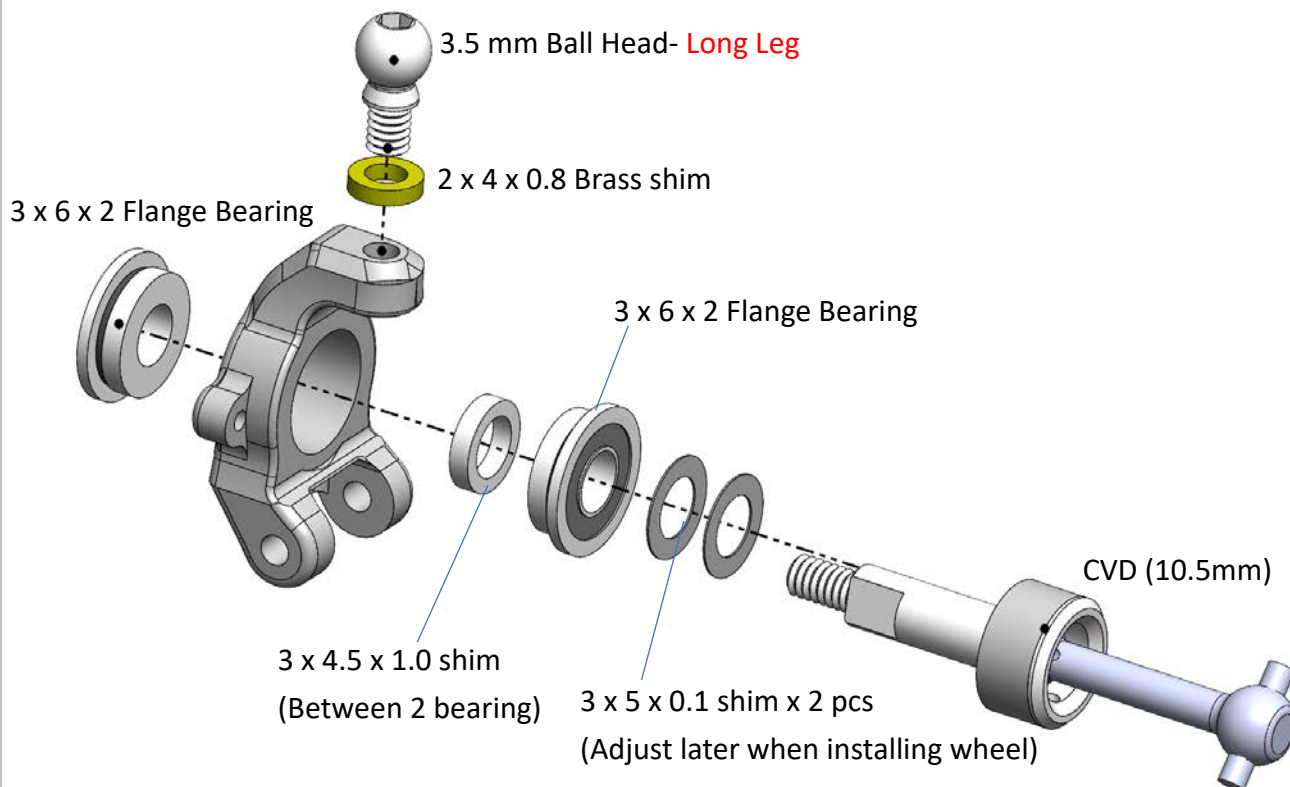


Droop screw tip come out 0.5mm

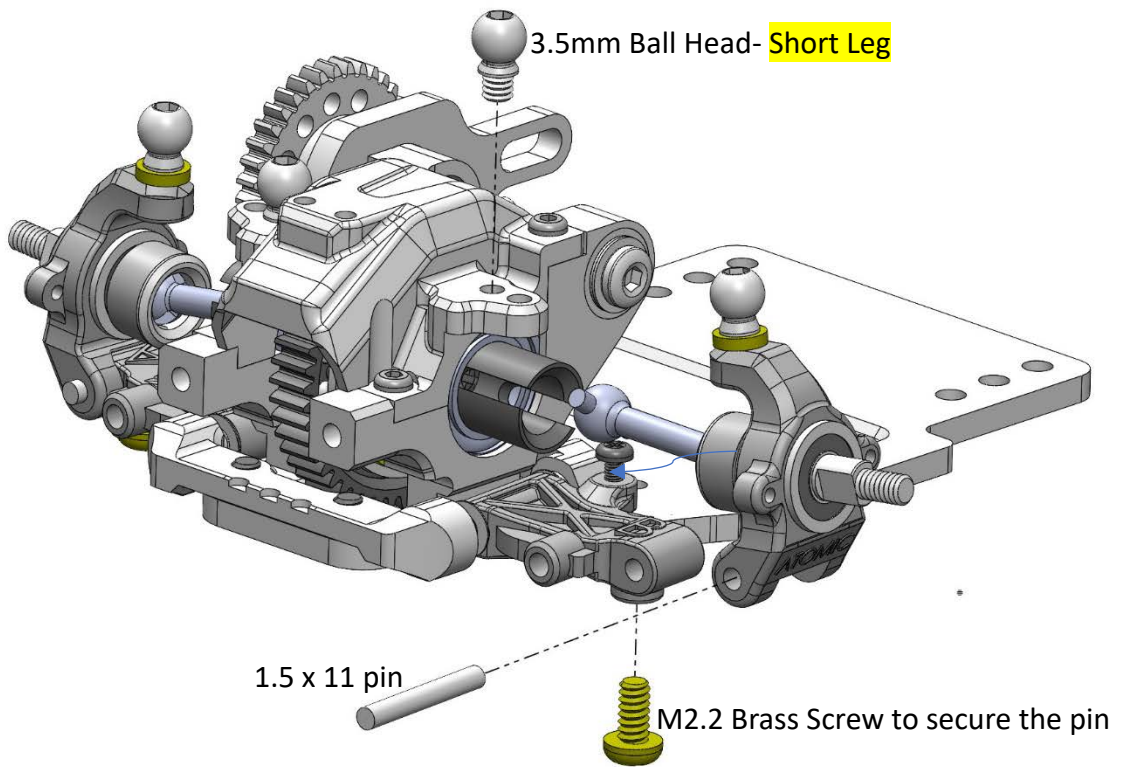
### Step 15 – Rear Arms



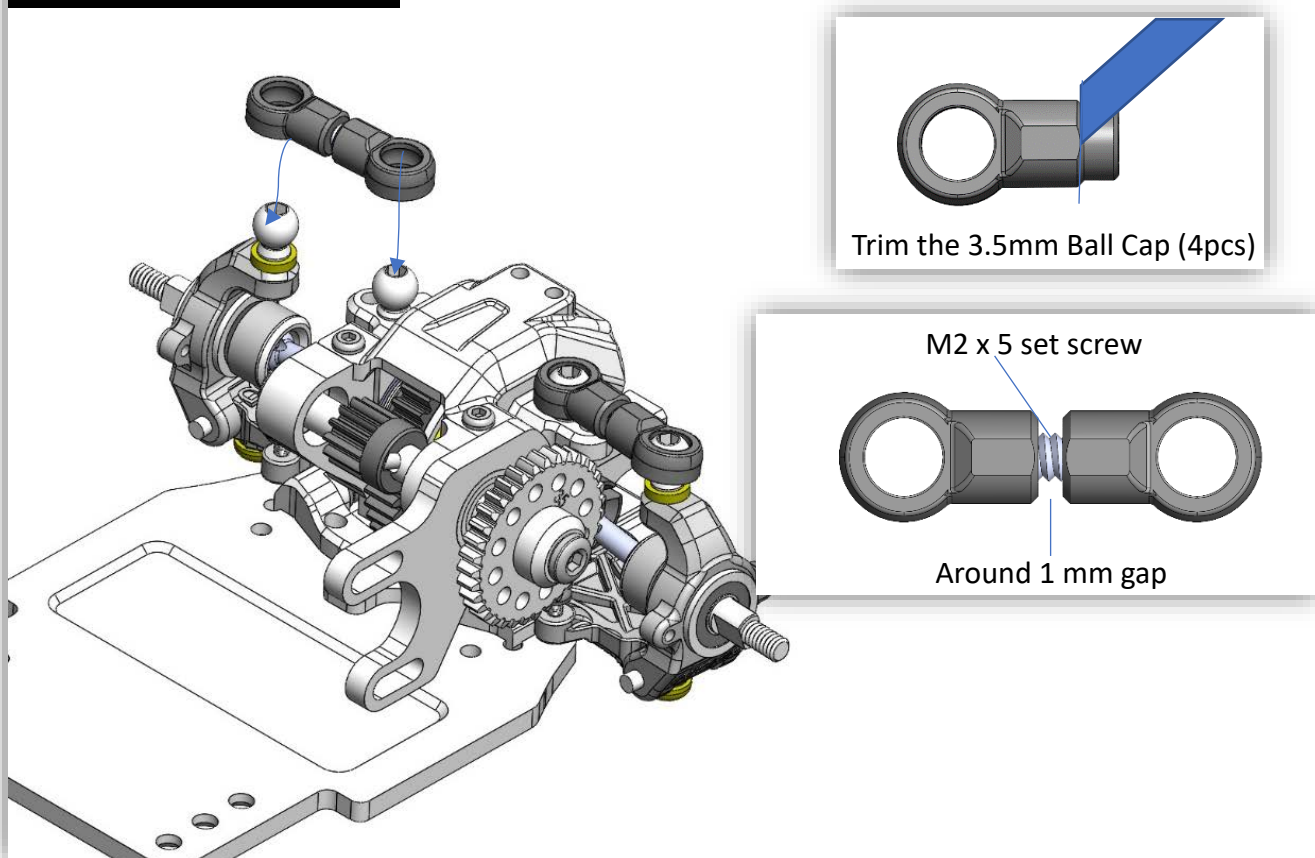
### Step 16 – Rear Knuckle (Open Bag 08)



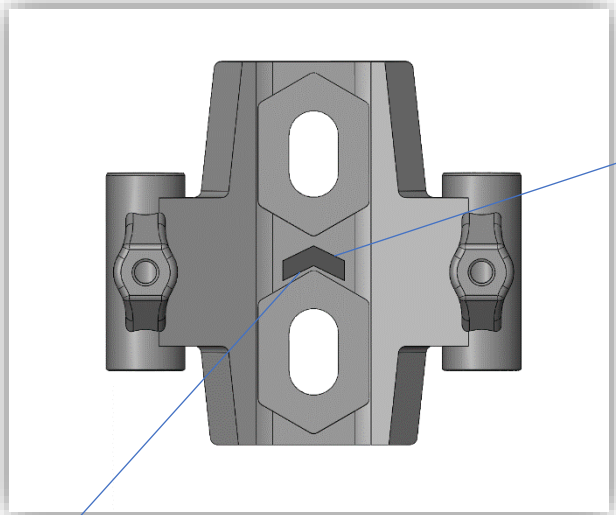
### Step 17 – Rear Knuckle



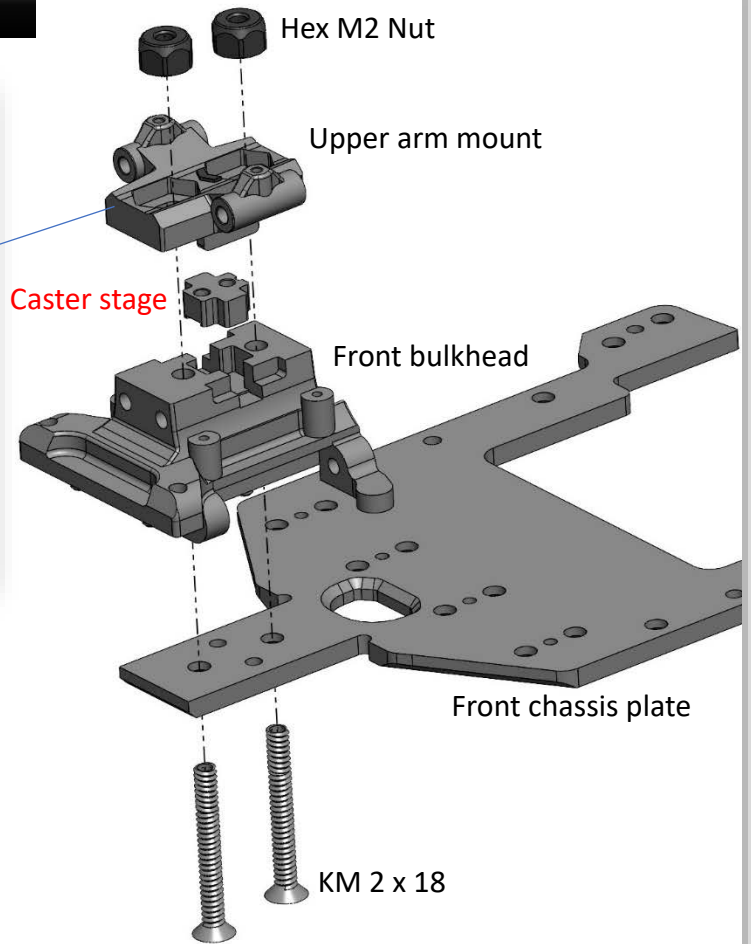
### Step 18 – Camber Link



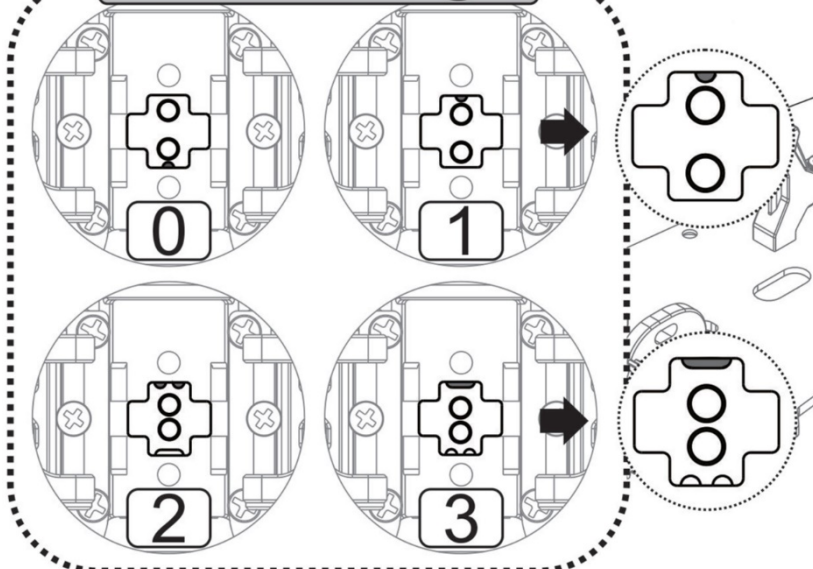
**Step 19 – Front Bulkhead (open Bag 9, 10)**



Pay attention to the arrow orientation, make sure it is pointing to the front.



**Caster Stage**

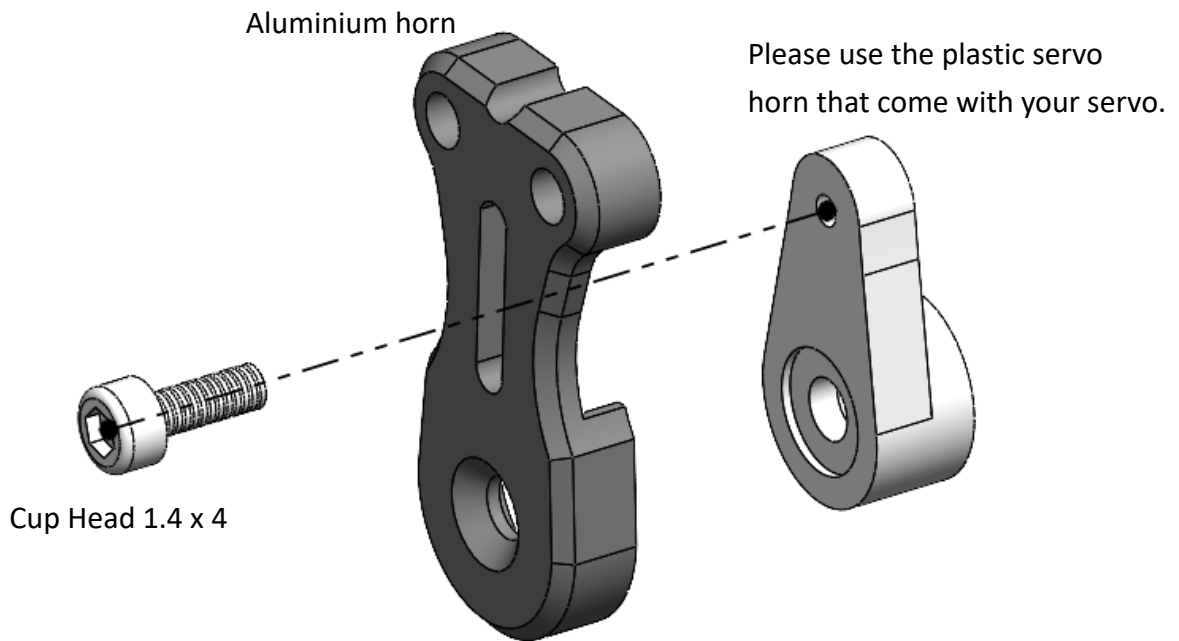


We can change the Caster angle **0, 1, 2, 3 degrees**, according to the orientation of caster stage block.

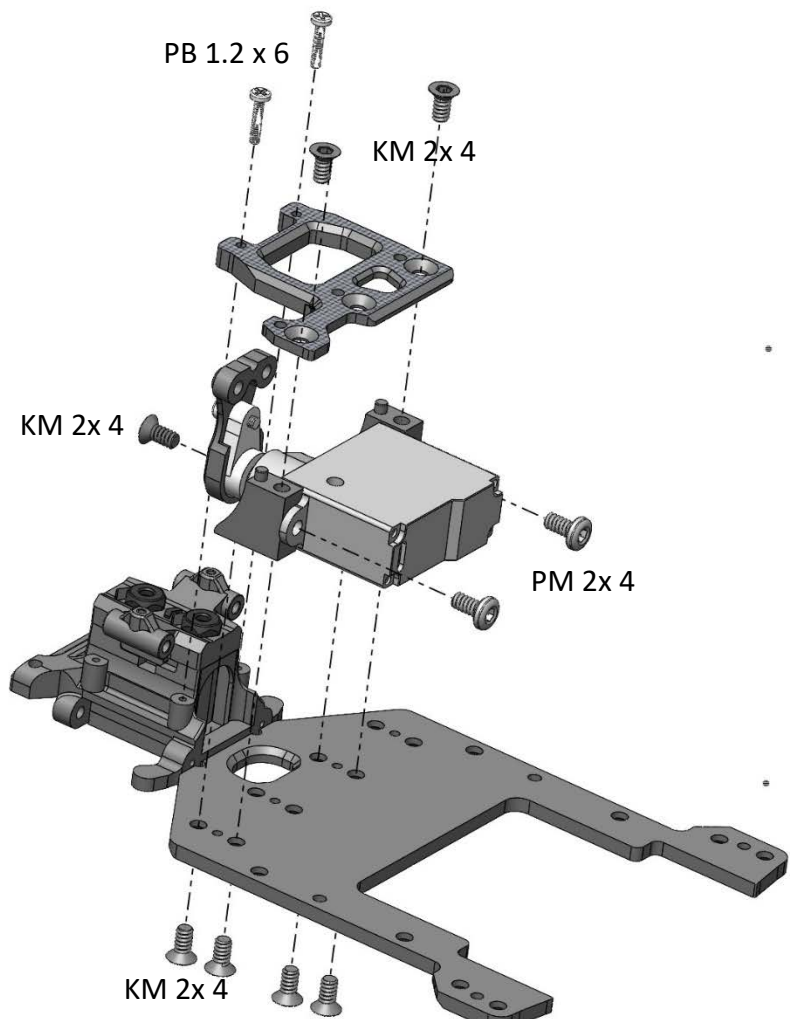
For example, when the “1 dot mark” is pointing to the front, the suspension system will have 1 degree caster angle.

More caster angle will give you more steering. We recommend starting at zero degree.

### Step 20 – Servo Horn

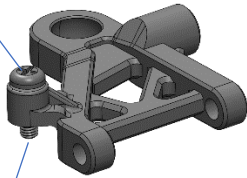


### Step 21 – Servo Mount

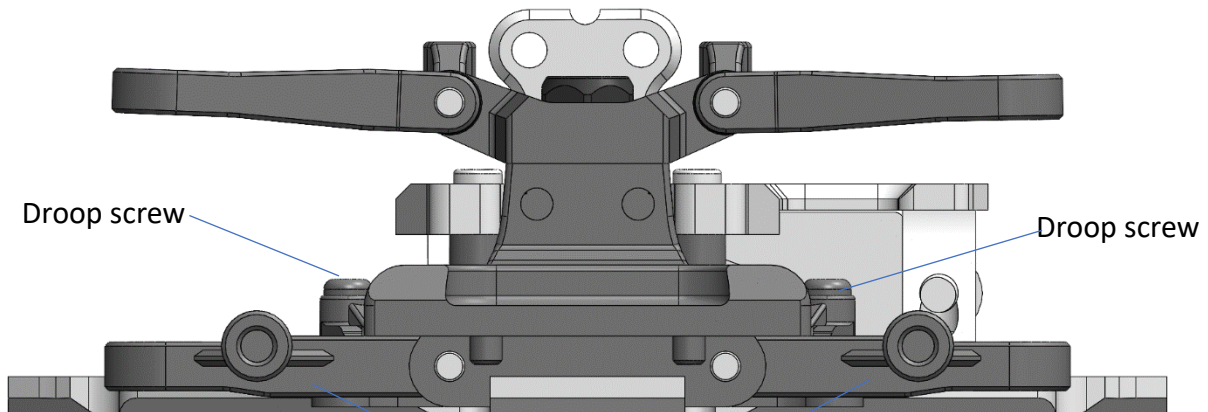
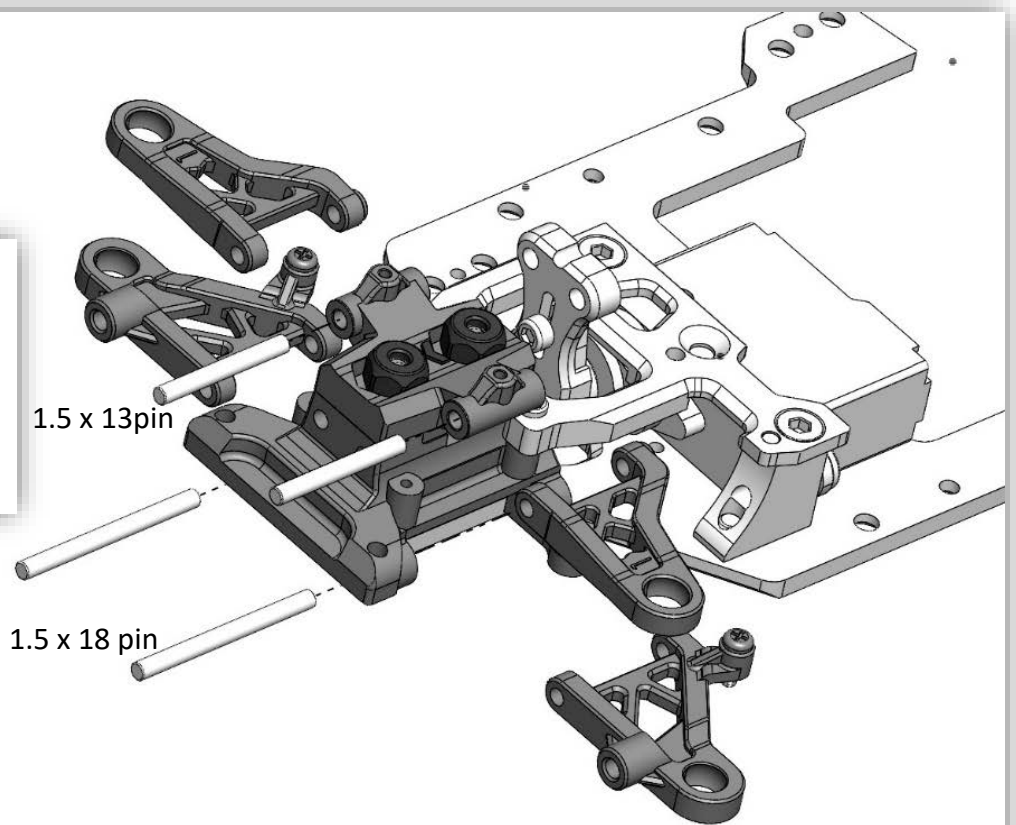


### Step 22 – Front Arms

PB 1.2 x 4 screw

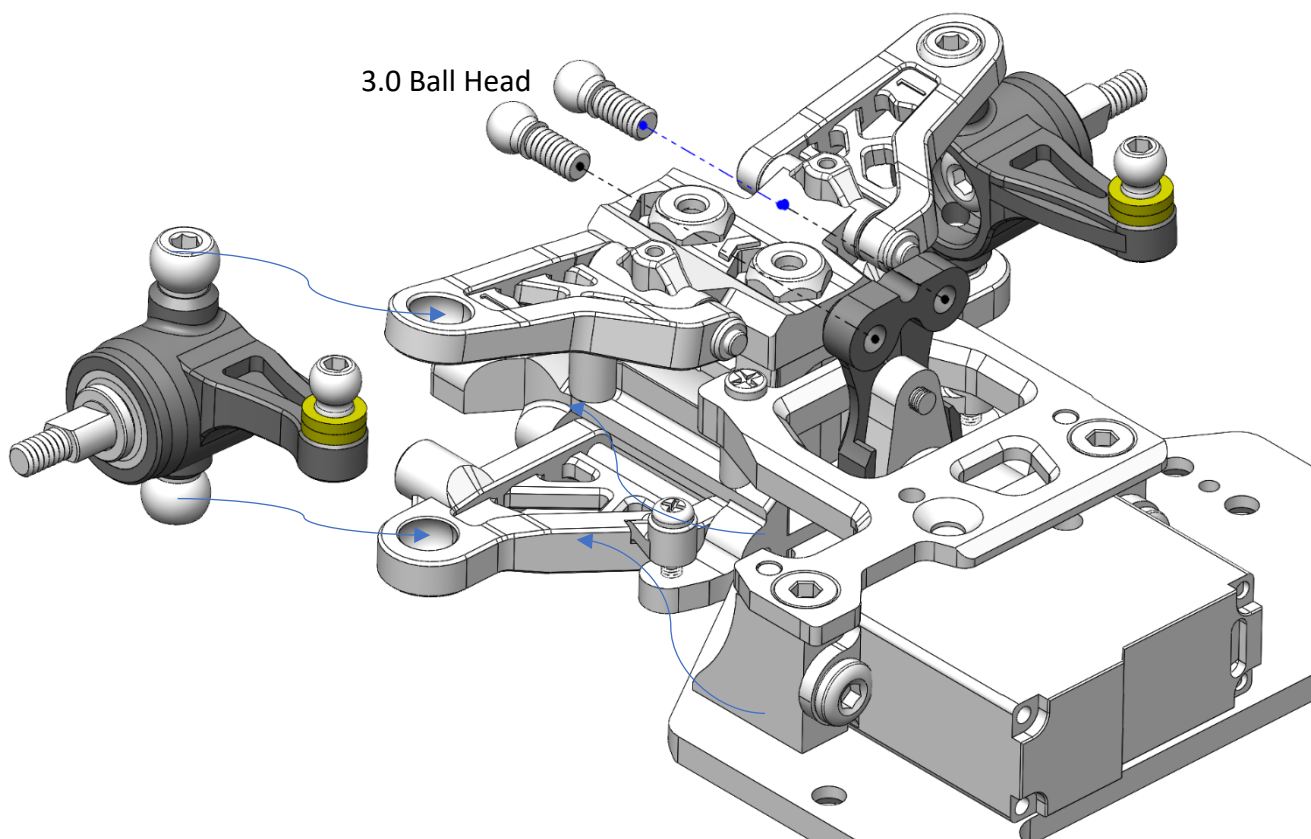
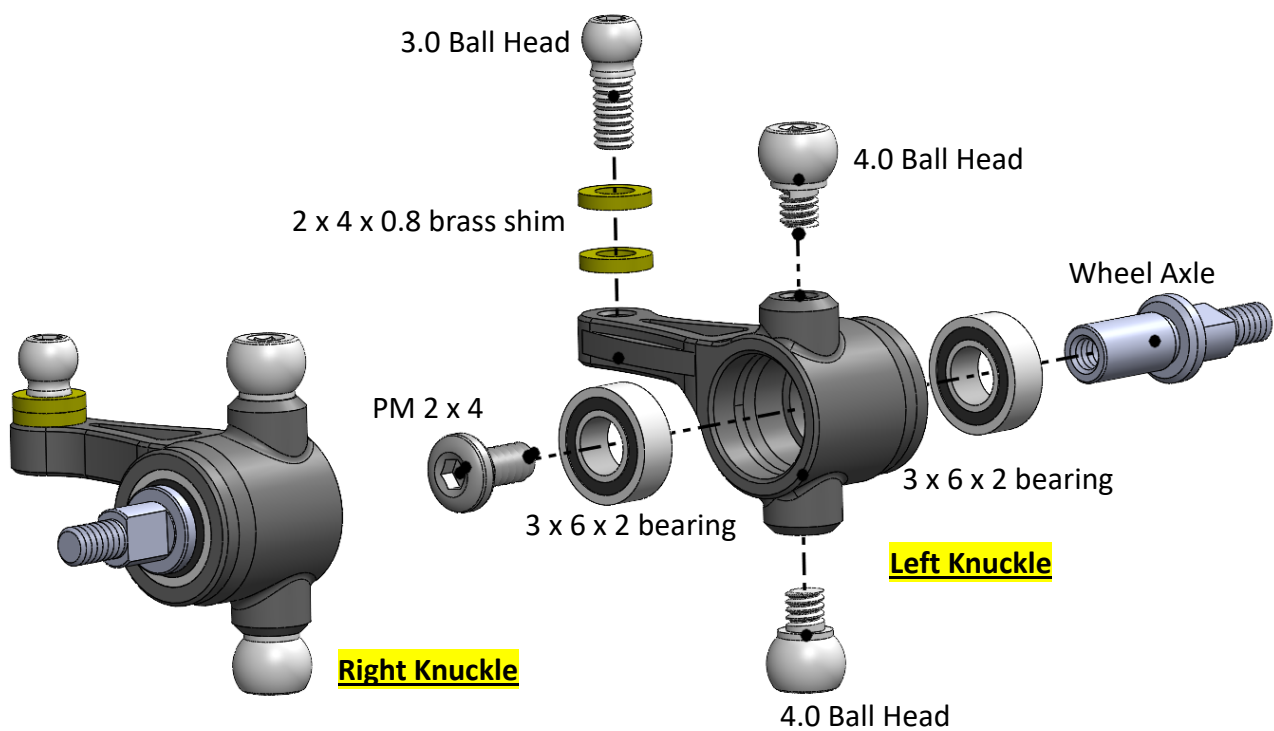


Droop screw tip come out around 1mm

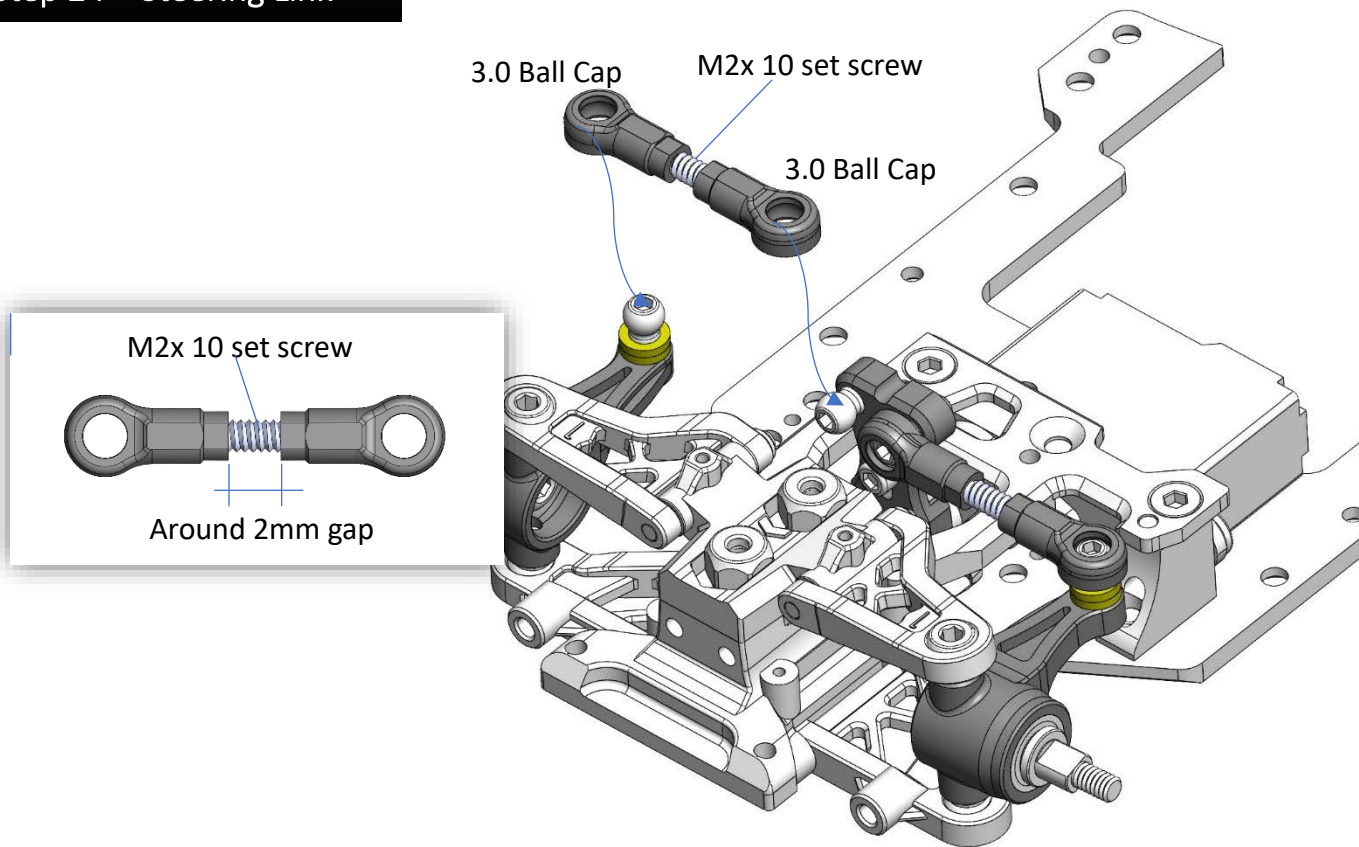


Adjust the droop screw to make the lower arms horizontal.

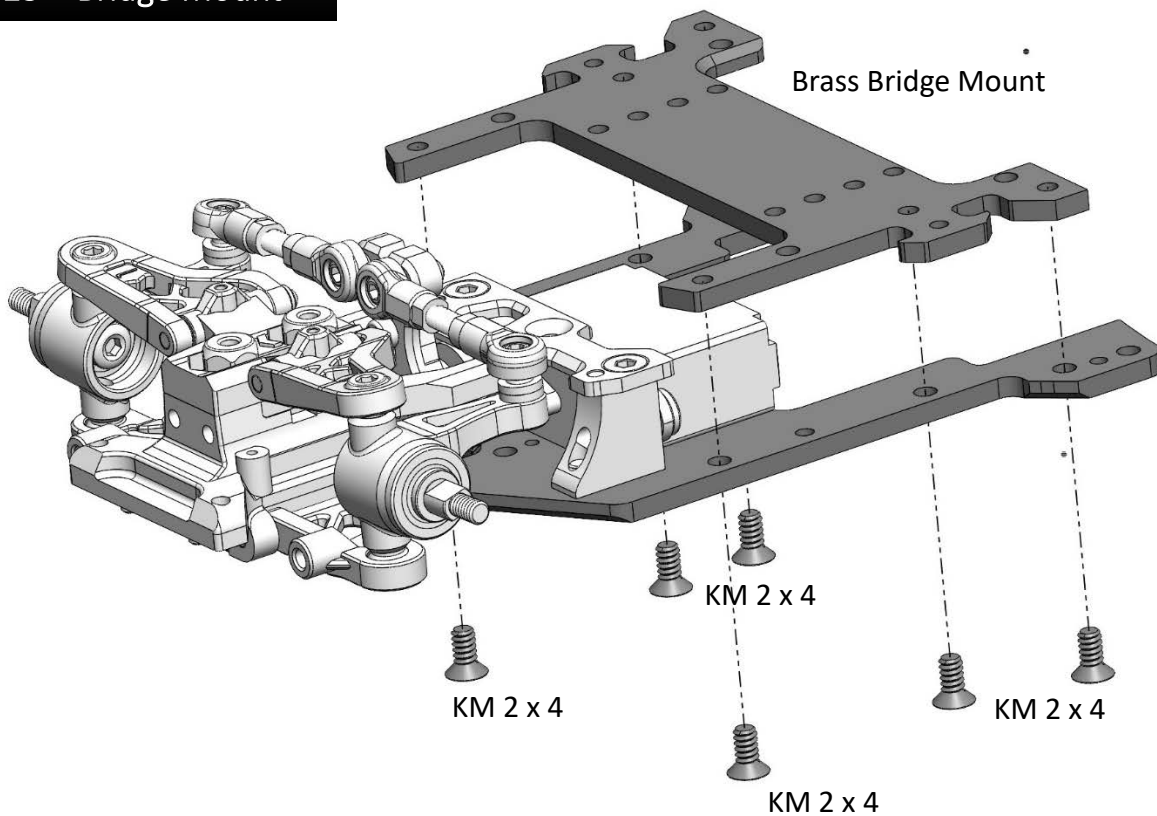
### Step 23 – Front Knuckles



### Step 24 – Steering Link



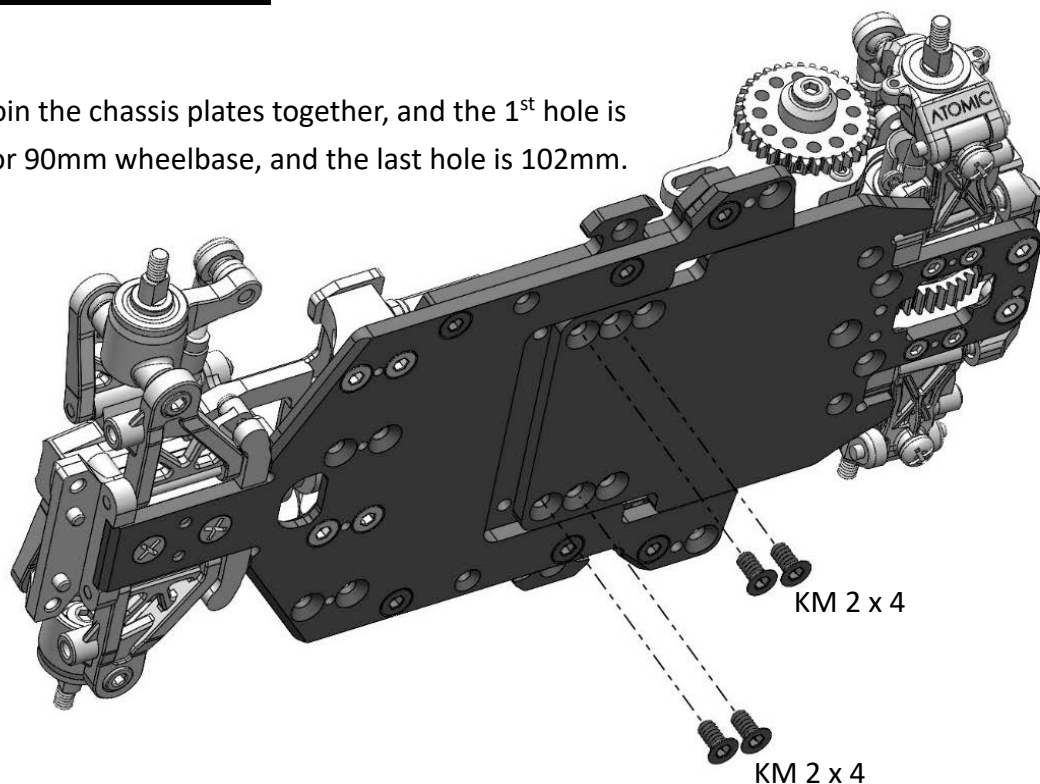
### Step 25 – Bridge Mount



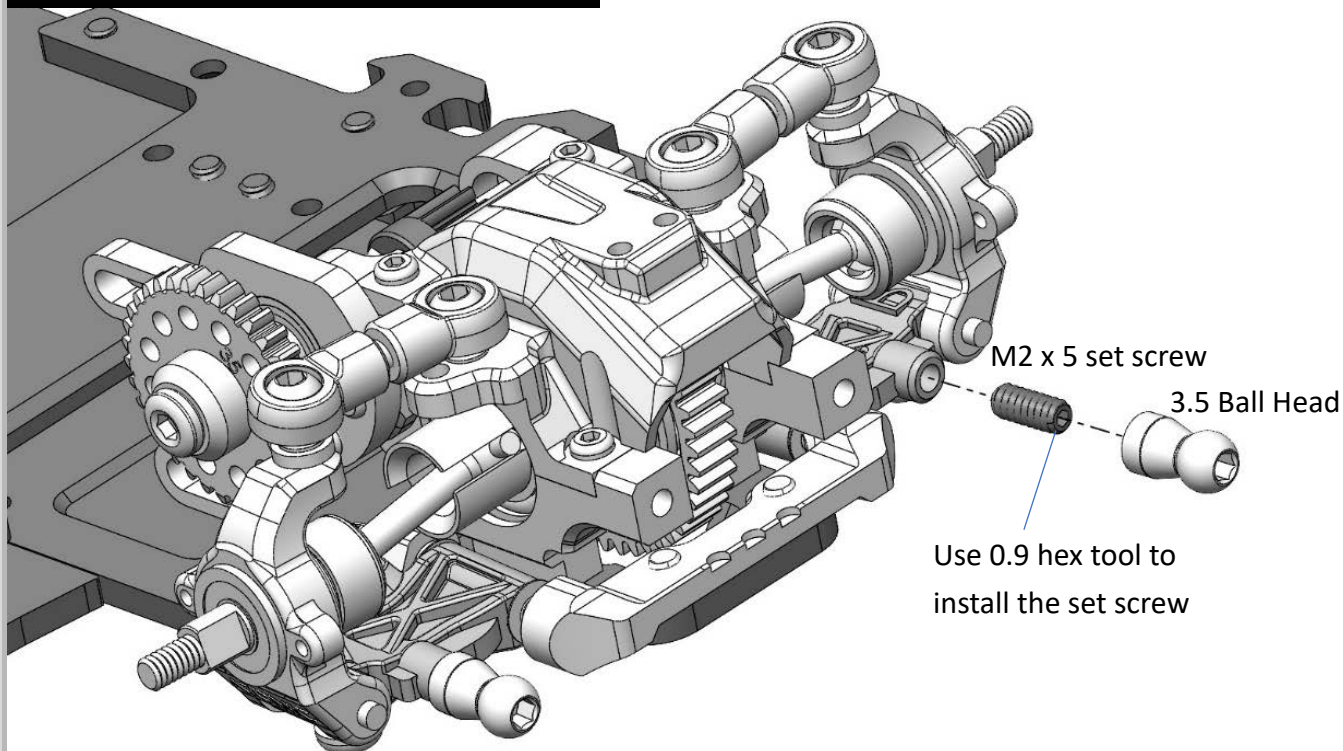


### Step 26 – Wheel Base

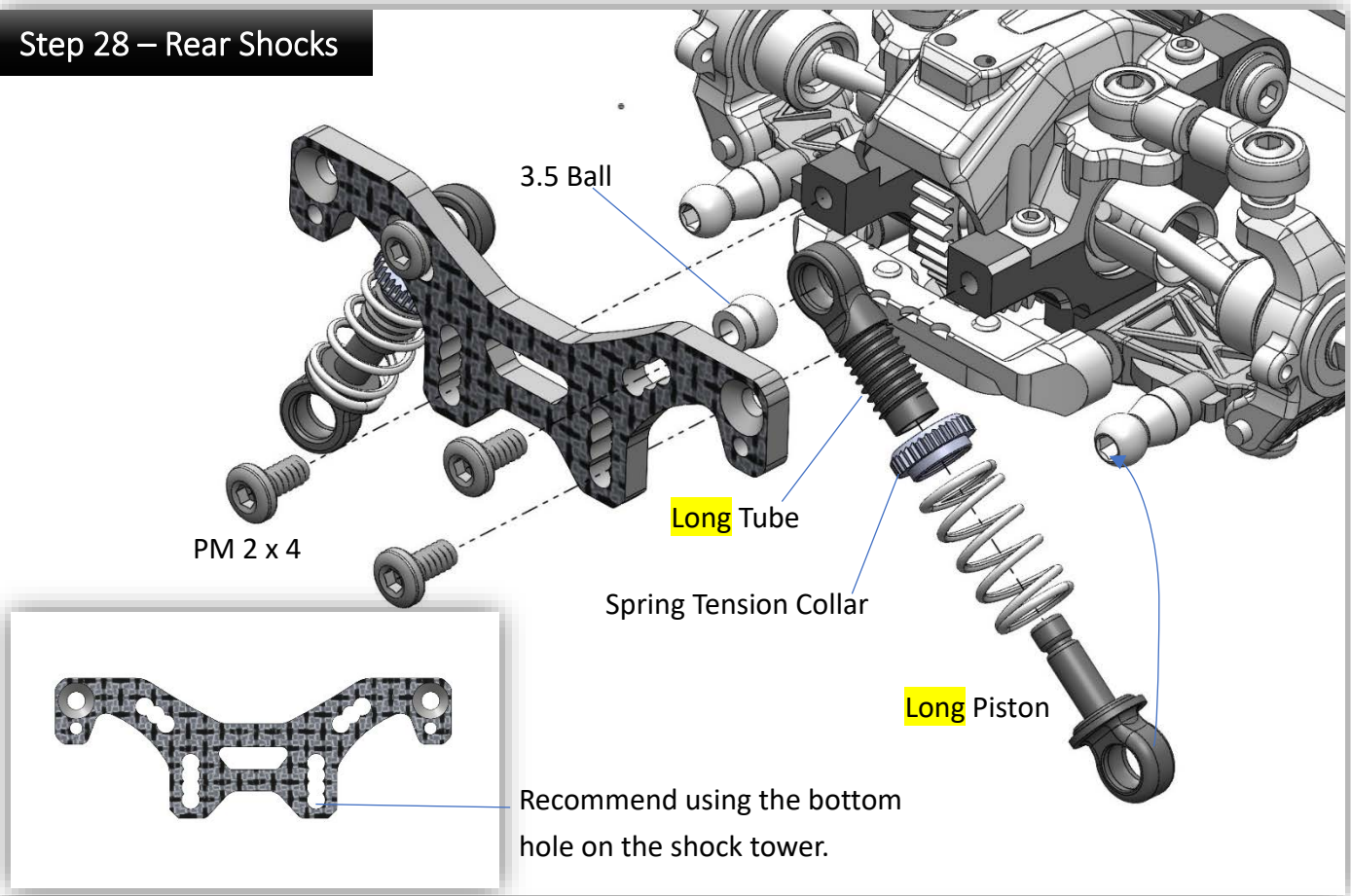
Join the chassis plates together, and the 1<sup>st</sup> hole is for 90mm wheelbase, and the last hole is 102mm.



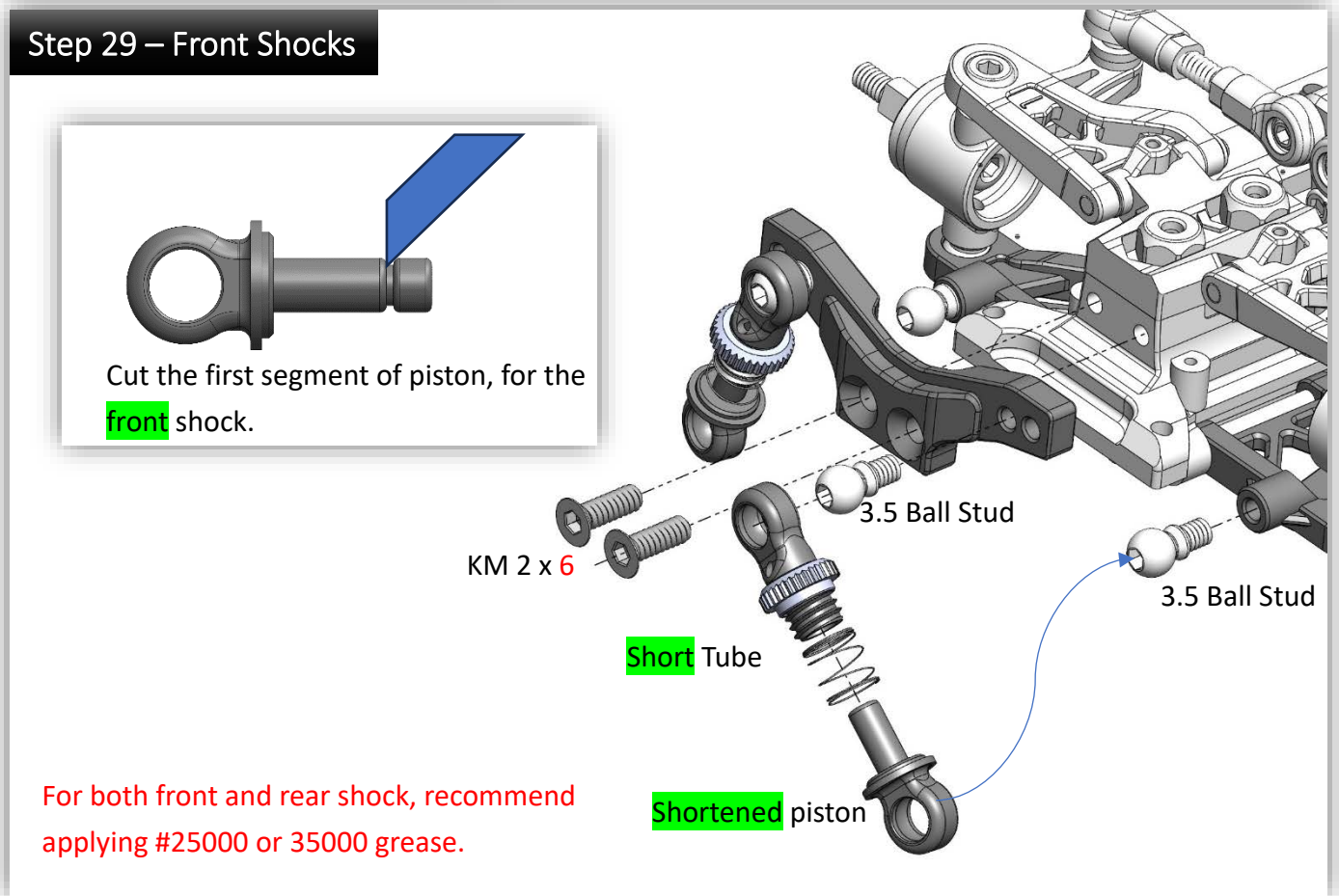
### Step 27 – Rear Shocks (Open bag 11)



### Step 28 – Rear Shocks

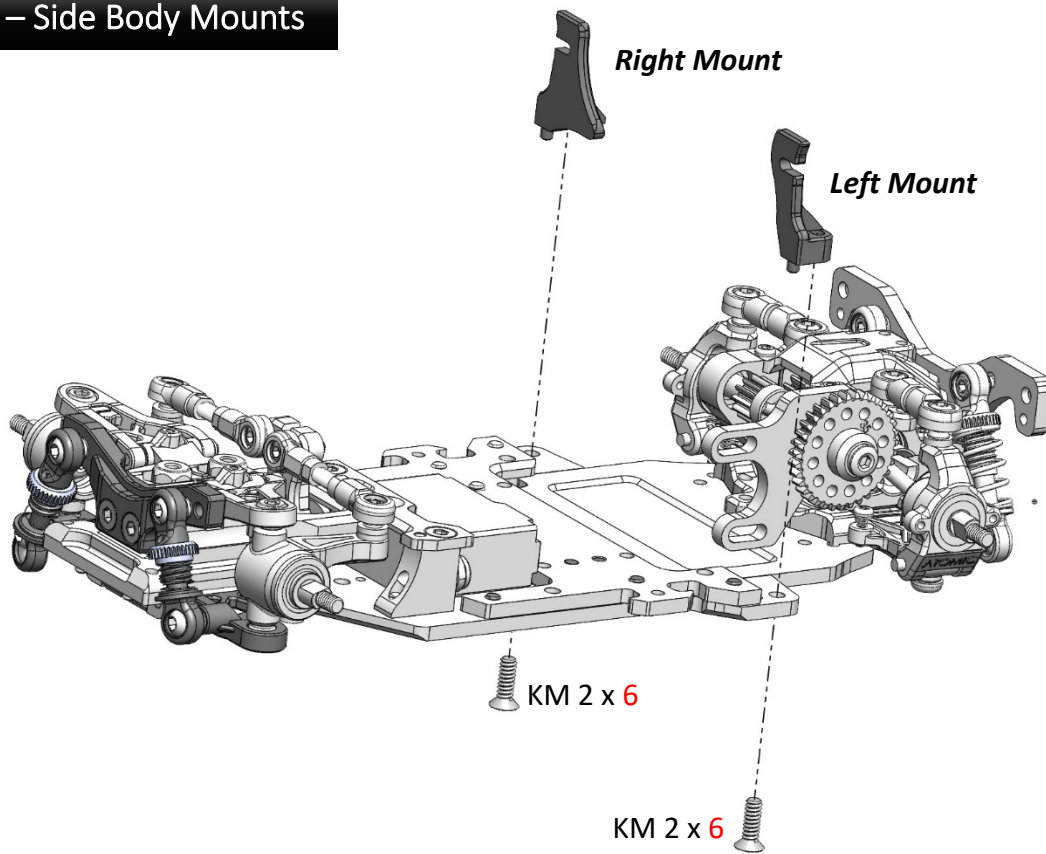


### Step 29 – Front Shocks

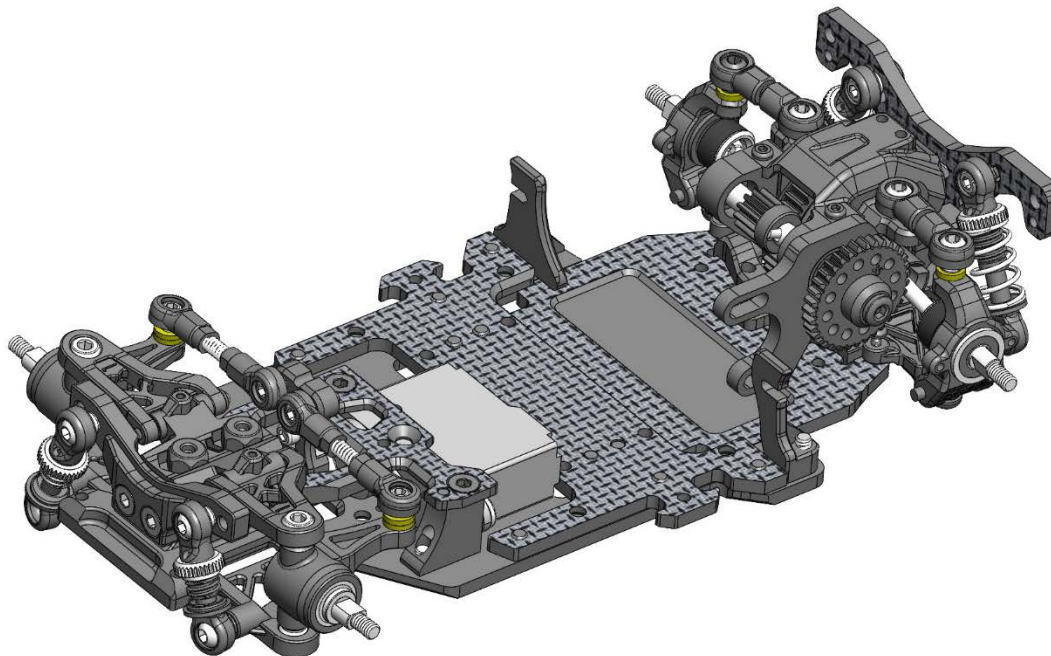


For both front and rear shock, recommend applying #25000 or 35000 grease.

### Step 30 – Side Body Mounts



### Finished Building



**Gear Ratio**

Spur	Motor Pinion					
	27	28	29	30	31	32
35	5.19	5.00	4.83	4.67	4.52	4.38

**Optional Parts:**

MRTEVO-UP01A	MRT EVO Servo Saver (Atomic 1820)
MRTEVO-UP01B	MRT EVO Servo Saver (AGFRC A06CLS)
MRTEVO-UP02	MRT EVO Alu. Front Knuckles
MRTEVO-UP03	MRT EVO Alu. Front Upper Arm Mount
MRTEVO-UP04	MRT EVO Alu. Side Body Mounts
MRTEVO-UP05	MRT EVO Rear Toe Moun (2 dots)
MRTEVO-UP06	MRT EVO Rear Toe Moun (3 dots)
MRTEVO-UP07	MRT EVO Rear Toe Moun (4 dots)
MRTEVO-UP08	MRT EVO Alu. Gear Box Cover
MRTEVO-UP09	MRT EVO Front Spring Set
MRTEVO-UP10	MRT EVO Rear Spring Set
MRTEVO-UP11	MRT EVO Brass Chassis (Front)
MRTEVO-UP12	MRT EVO Brass Chassis (Rear)

**Spare Parts:**

MRTEVO-01	MRT EVO Front Arms
MRTEVO-02	MRT EVO Front Knuckles
MRTEVO-03	MRT EVO Rear Arms
MRTEVO-04	MRT EVO Rear Knuckles
MRTEVO-05	MRT EVO Pins
MRTEVO-06	MRT EVO Plastic Ball Caps
MRTEVO-07	MRT EVO Steel Ball Studs
MRTEVO-08	MRT EVO Side Body Mounts
MRTEVO-09	MRT EVO Front Axles
MRTEVO-10	Ball Diff Pressure Plate and hardware
MRTEVO-11	MRT EVO O-Rings
MRTEVO-12	MRT EVO Spur Gear 35T (POM)
MRTEVO-13	MRT EVO Main Shaft
MRTEVO-14	MRT EVO 12T Drive Gear
MRTEVO-15	MRT EVO Front Bulkhead
MRTEVO-16	MRT EVO Rear Shock Tower