

Step 01 (open Bag 01)**Build 2 pcs**

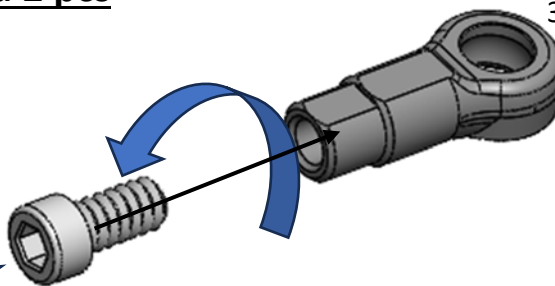
3.0 Ball Cap

Reverse Thread
Cup Head M2 screw



Use the **Reverse** thread M2 screw as a tool to make a reverse thread on the ball cap.

1. *turn the screw anti-clockwise*
2. *fully tighten the screw*
3. *then remove the screw*

**Step 02**

Hobby Knife



Trim the first segment of the
ball cap

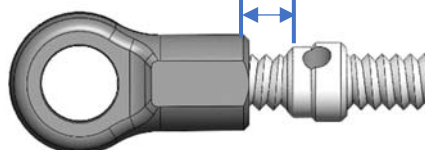
Step 03**Reverse Thread** side

Normal Thread side

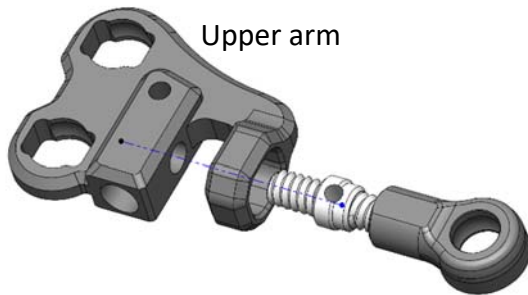
0.9mm hex tool

Screw the turnbuckle to the ball cap
using **Reverse Thread** side.

Leave around 1.5mm gap

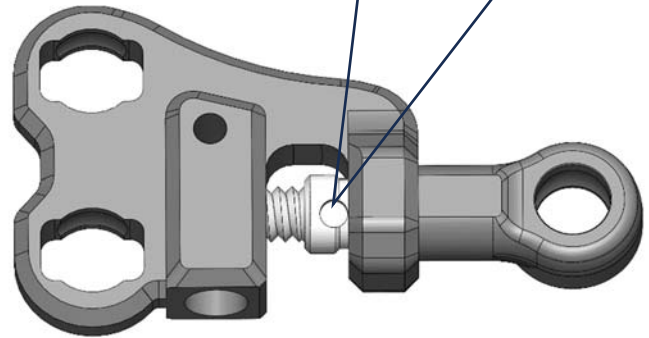


Step 04

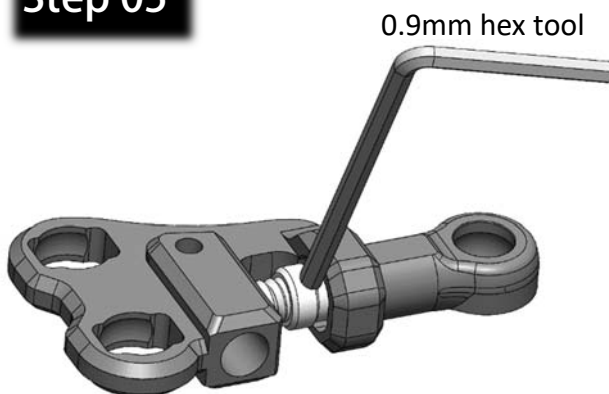


Screw the turnbuckle to the upper arm. (**Normal** thread side)

Screw the turnbuckle until we can see the hole.

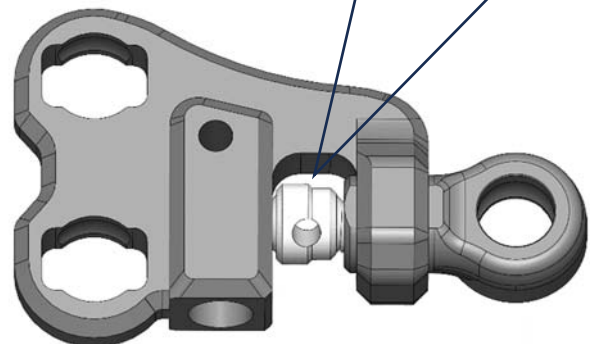


Step 05

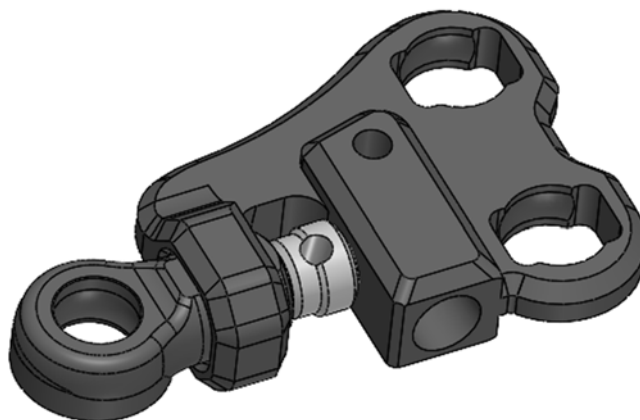


Use the 0.9mm hex tool to screw the turnbuckle.

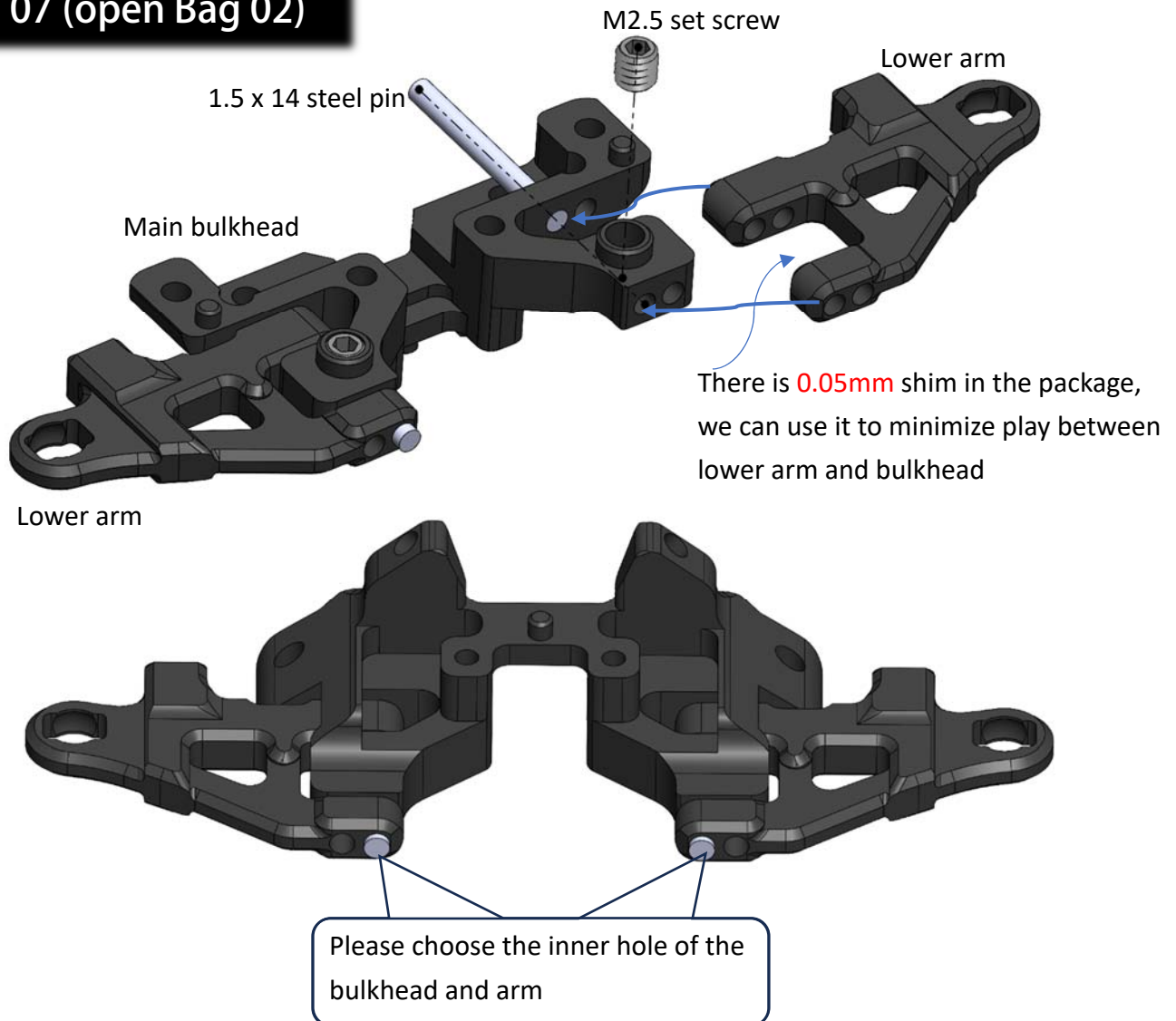
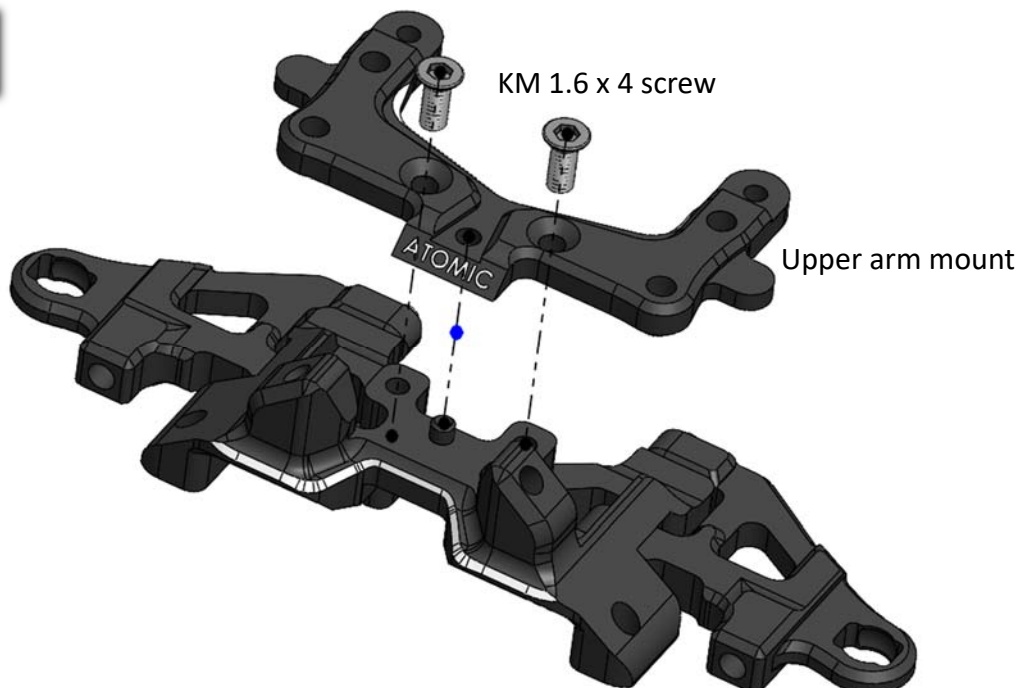
Fully screw the turnbuckle to the upper arm. (we will adjust the camber angle later)

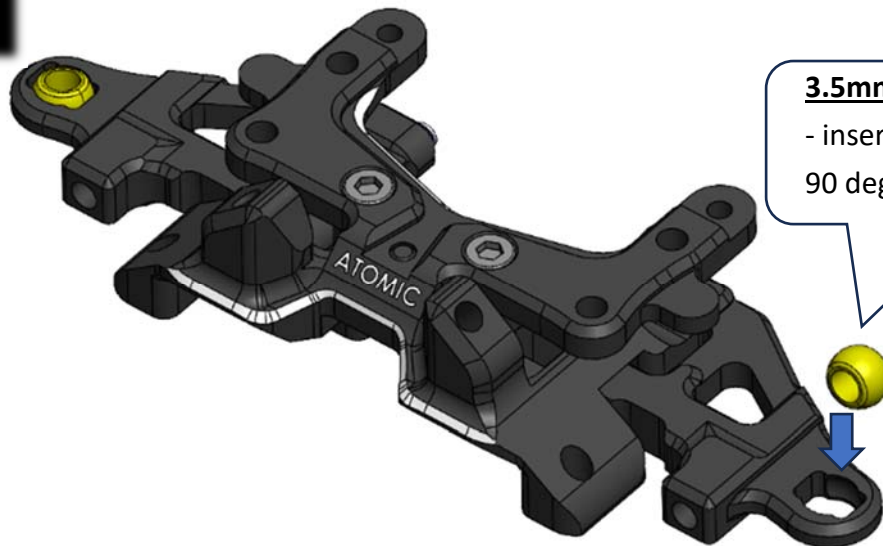


Step 06

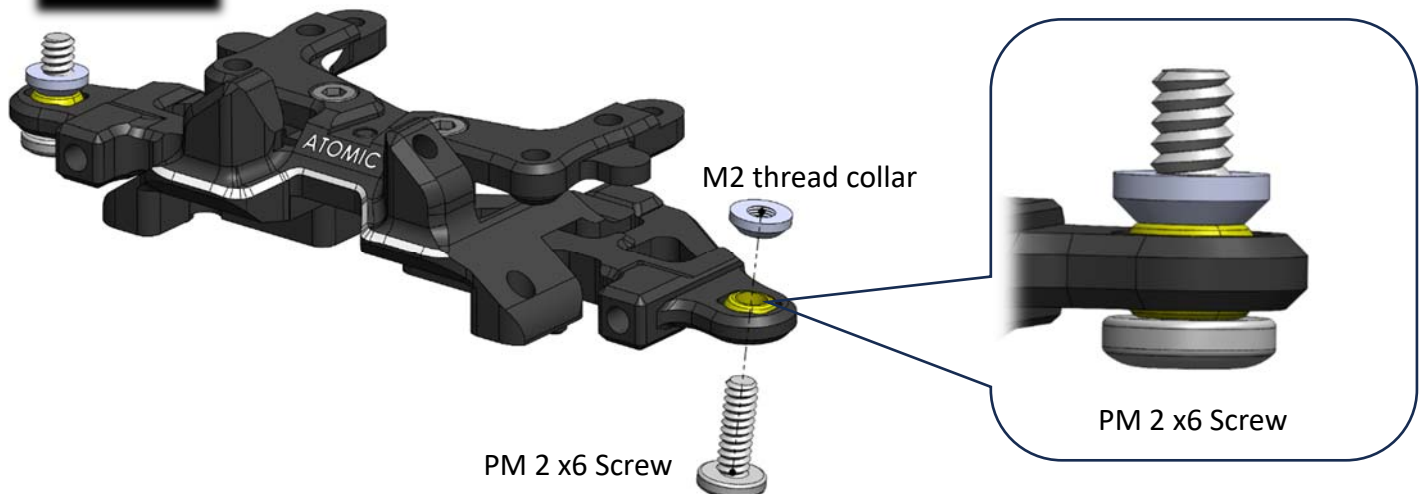


Repeat above steps to build the "Right" arm

Step 07 (open Bag 02)**Step 08**

Step 09**3.5mm pivot ball**

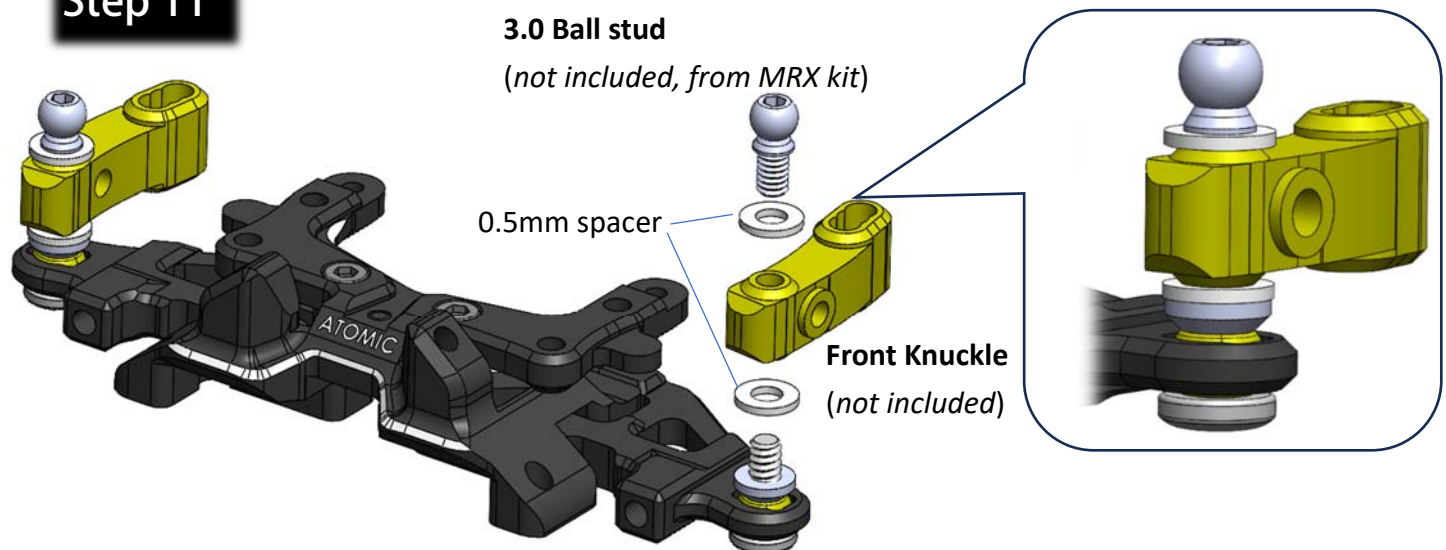
- insert it vertically and then turn 90 degree to lock it in place.

Step 10

M2 thread collar

PM 2 x6 Screw

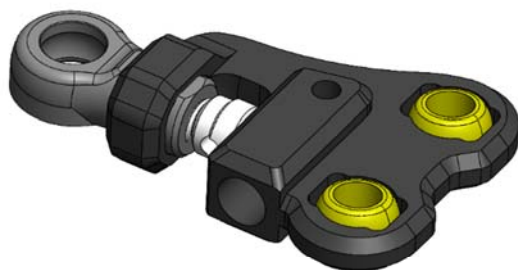
PM 2 x6 Screw

Step 11**3.0 Ball stud***(not included, from MRX kit)*

0.5mm spacer

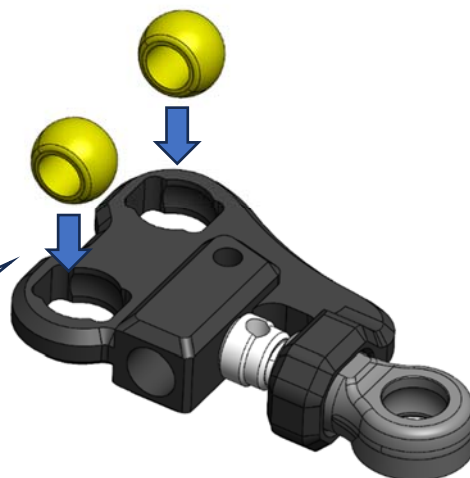
Front Knuckle
(not included)

Step 12

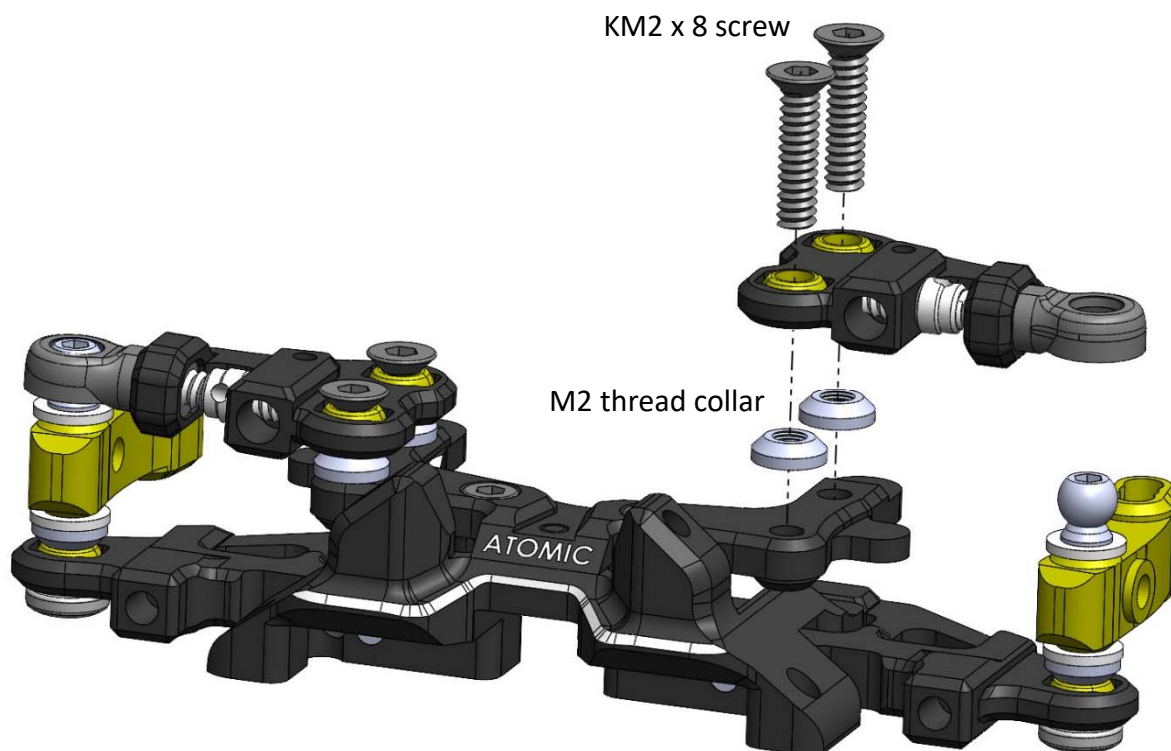


3.5mm pivot ball

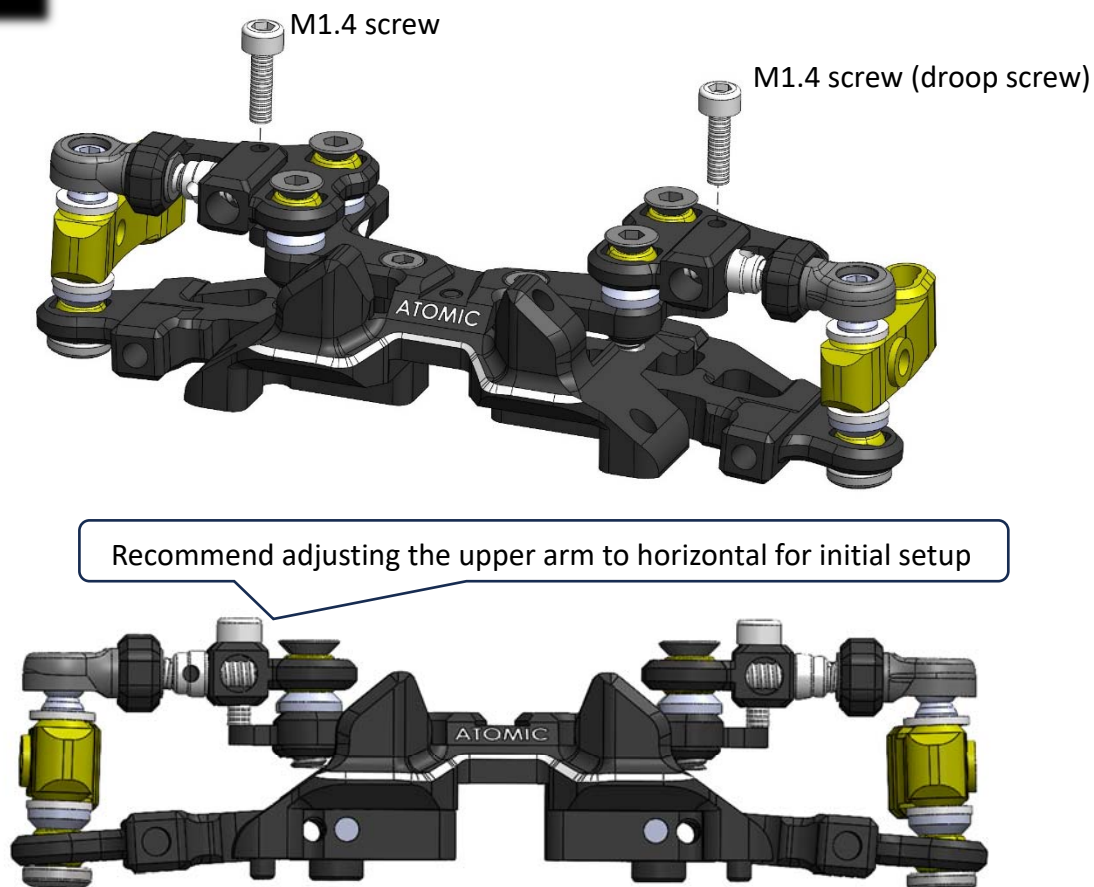
- insert it vertically and then turn 90 degree to lock it in place.



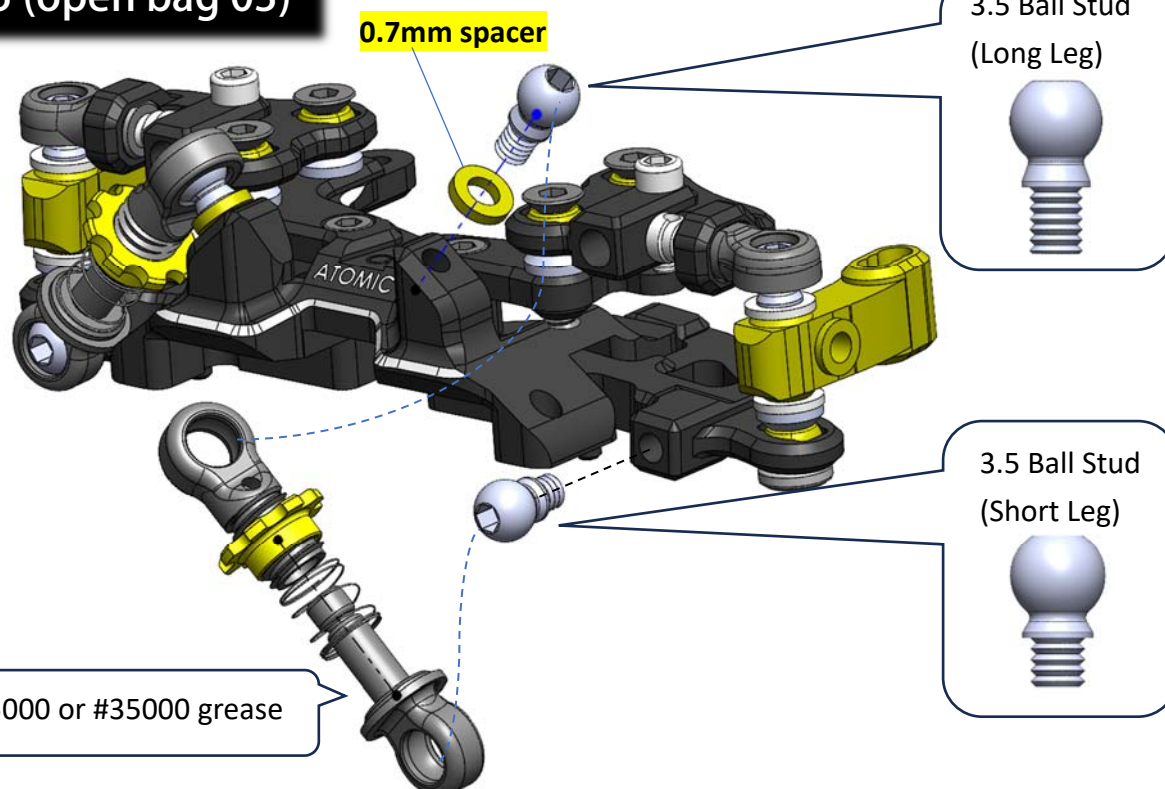
Step 13



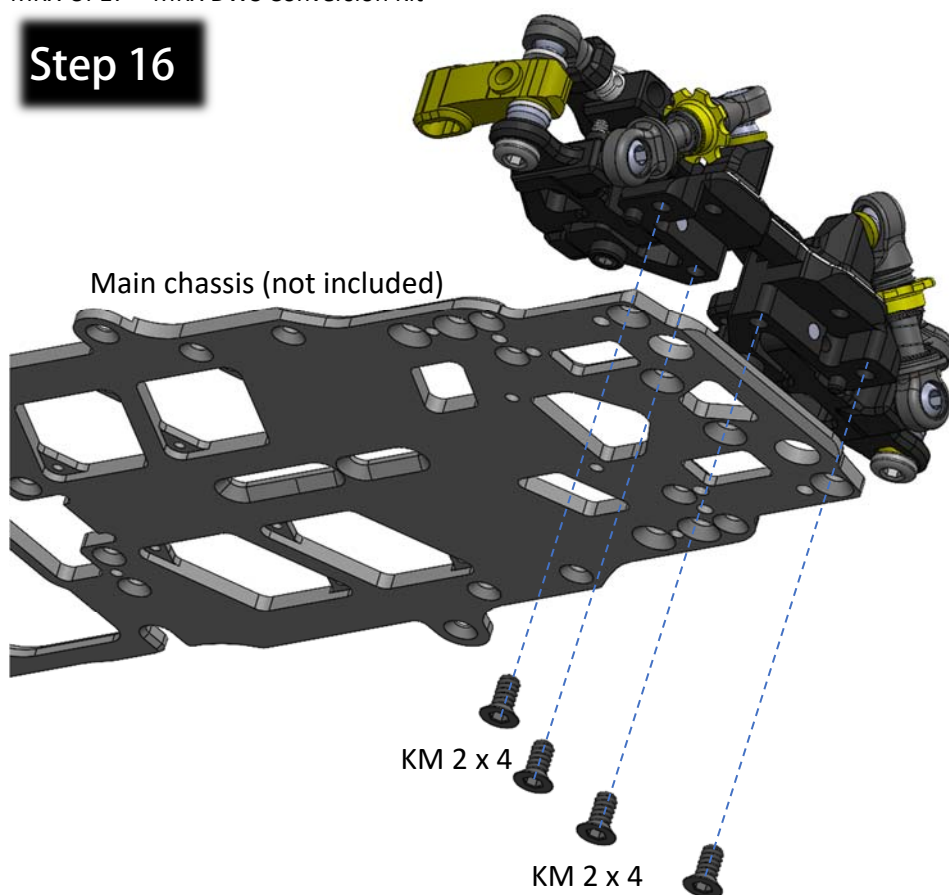
Step 14



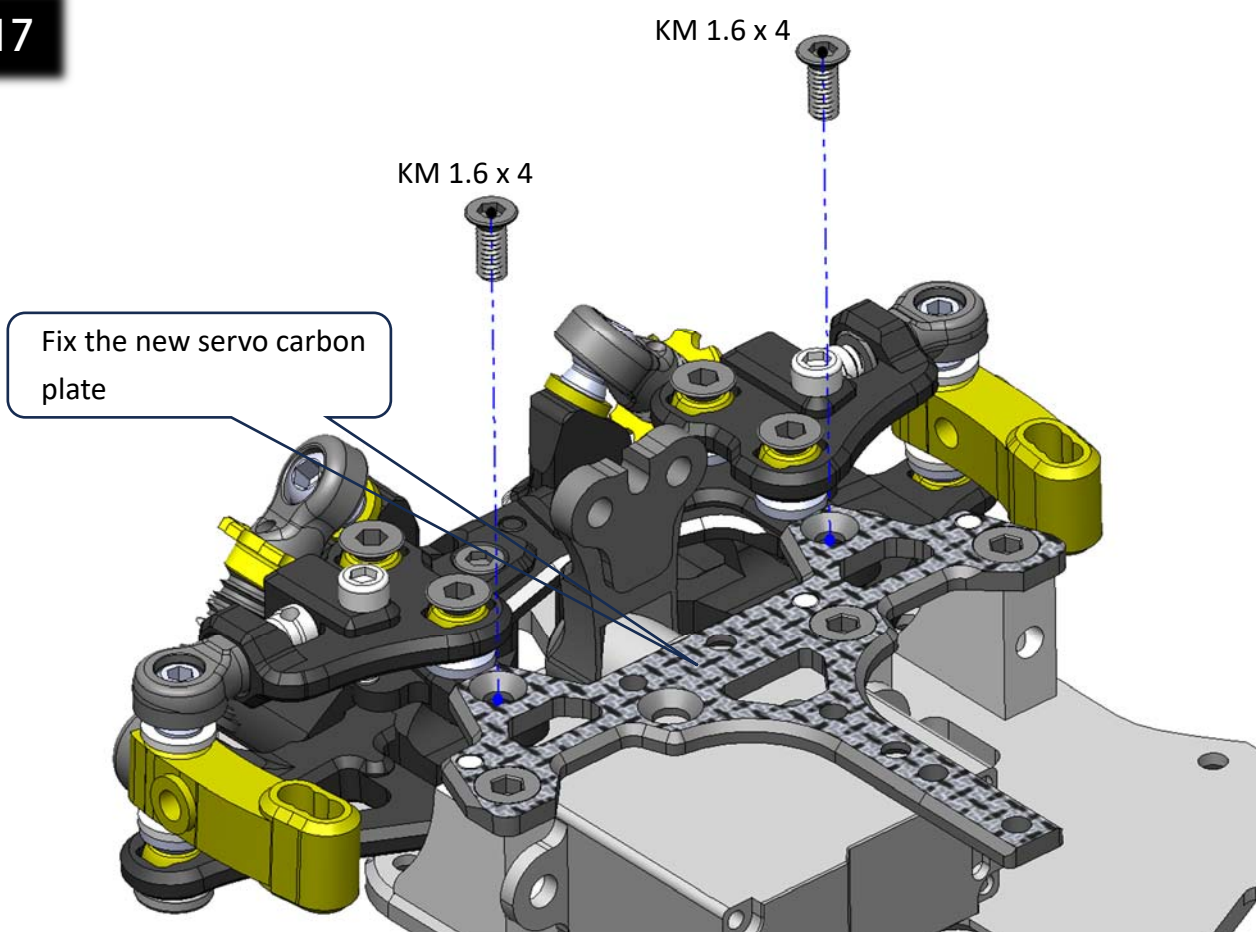
Step 15 (open bag 03)

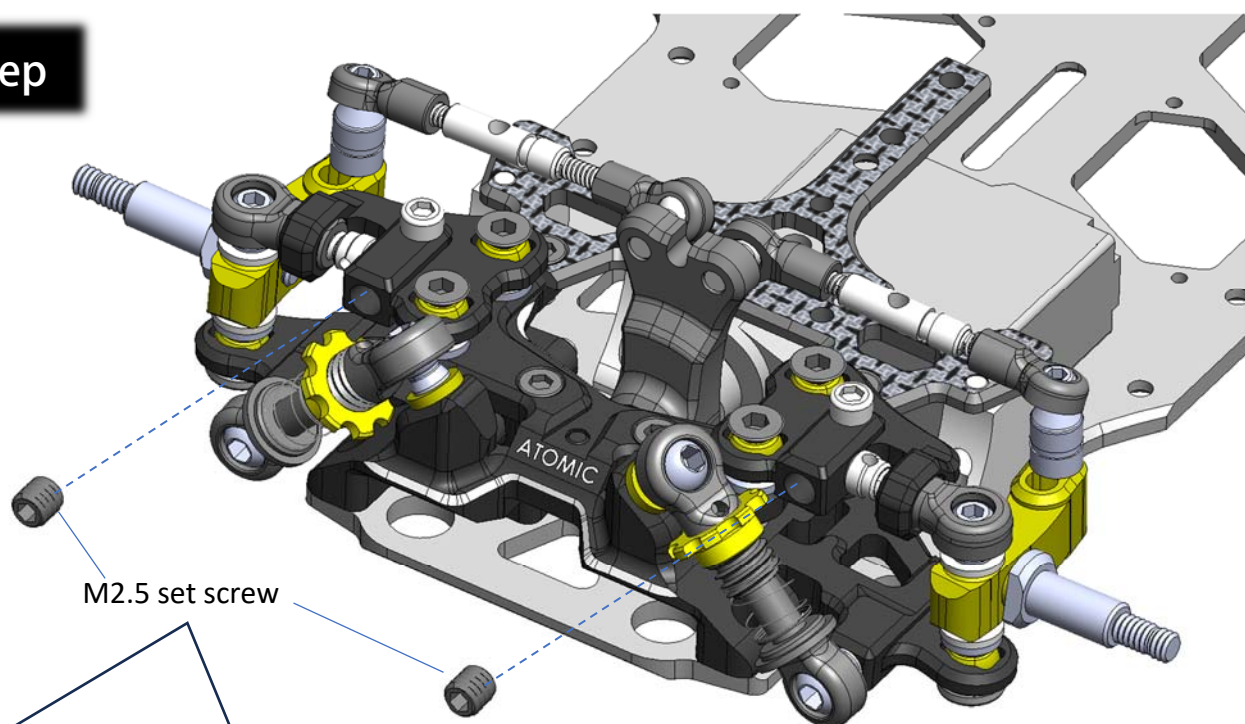


Step 16



Step 17



Last step

M2.5 set screw

Install everything back and fix this M2.5 set screw to prevent wobble of the turnbuckle, after setting the desired camber angle. (recommend starting with 1.0 or 1.5 degree)