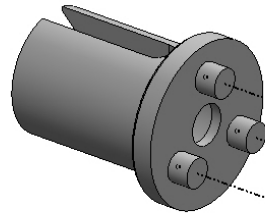


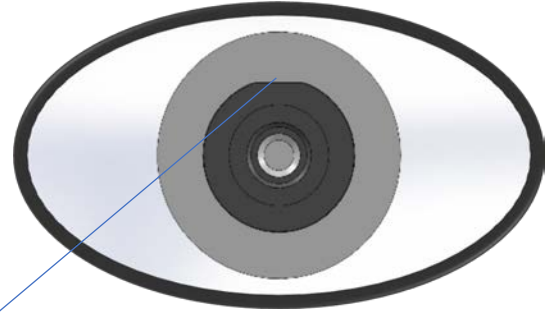
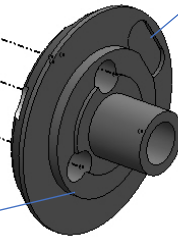
Step-01

Attention: Align the "D" Shape

POM diff out-drive



Alu. Hub

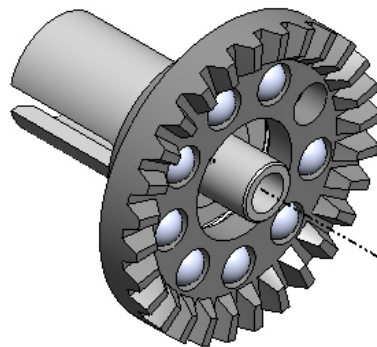


Steel Diff Plate

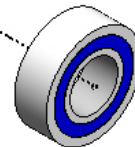
- Apply ball diff grease to the hub and attach the diff plate.
- Diff grease is act as the adhesive to hold the cup and plate together.
- Use the #1500 sandpaper to polish the pressure plates and thrust bearing plates for best performance.

Step-02

Diff Spur Gear (28T)



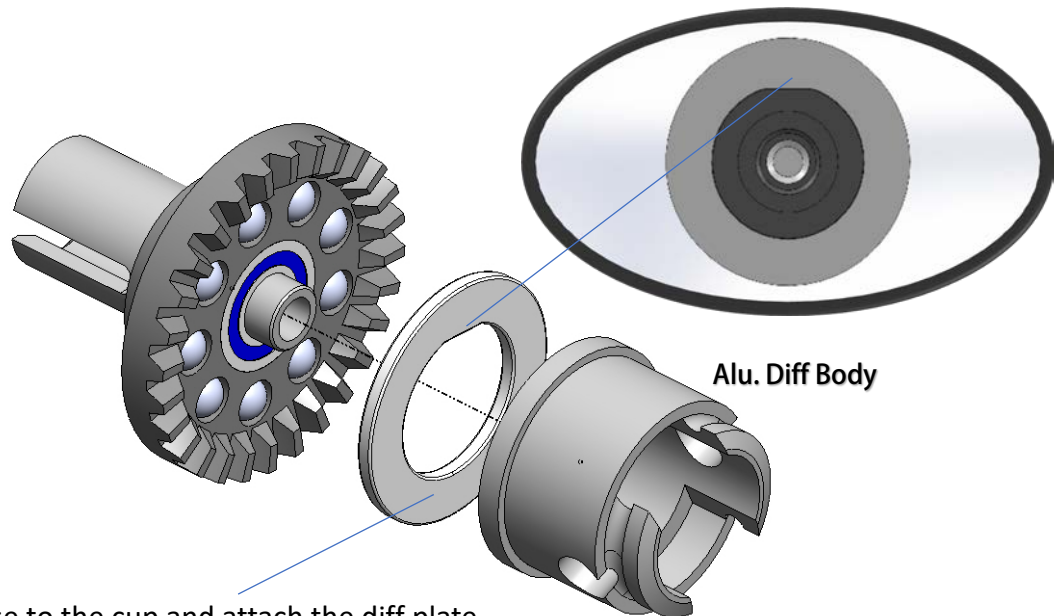
Apply Ball Diff Grease to balls and insert them to the diff spur gear.



Insert the Bearing (3*6*2) to the pulley, and attach pulley to the diff cup

Step-03

Attention: Align the "D" Shape



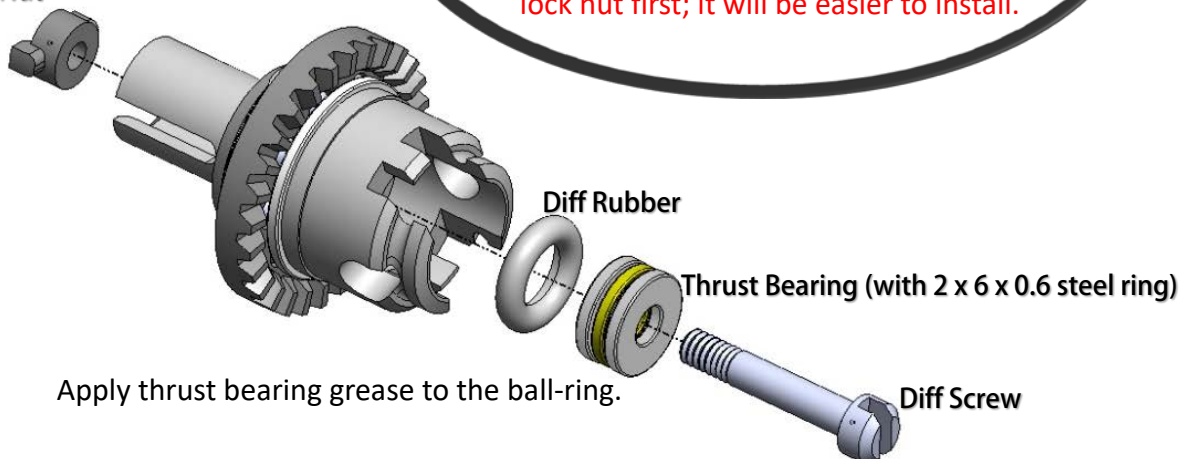
Apply ball diff grease to the cup and attach the diff plate.
Diff grease is act as the adhesive to hold the cup and plate together.

Step-04

***** Attention *****

Use the M2 screw to make thread on the lock nut first; it will be easier to install.

Diff Lock Nut



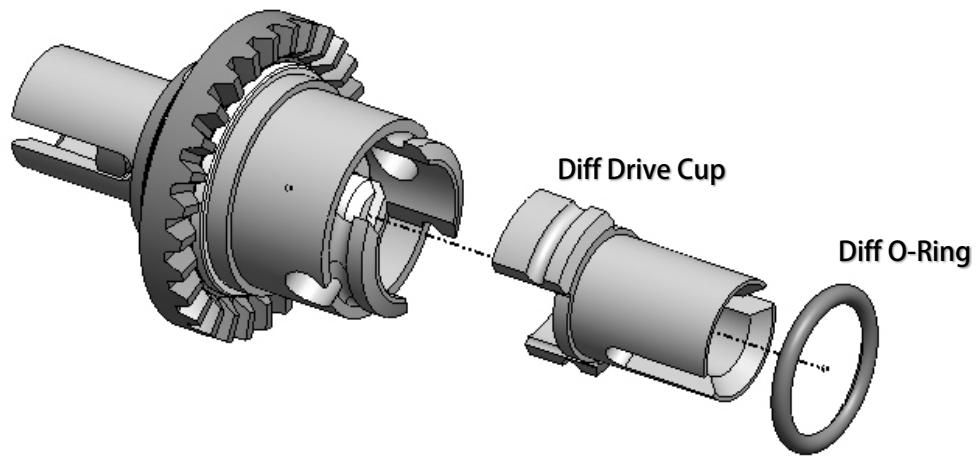
Apply thrust bearing grease to the ball-ring.

Diff Rubber

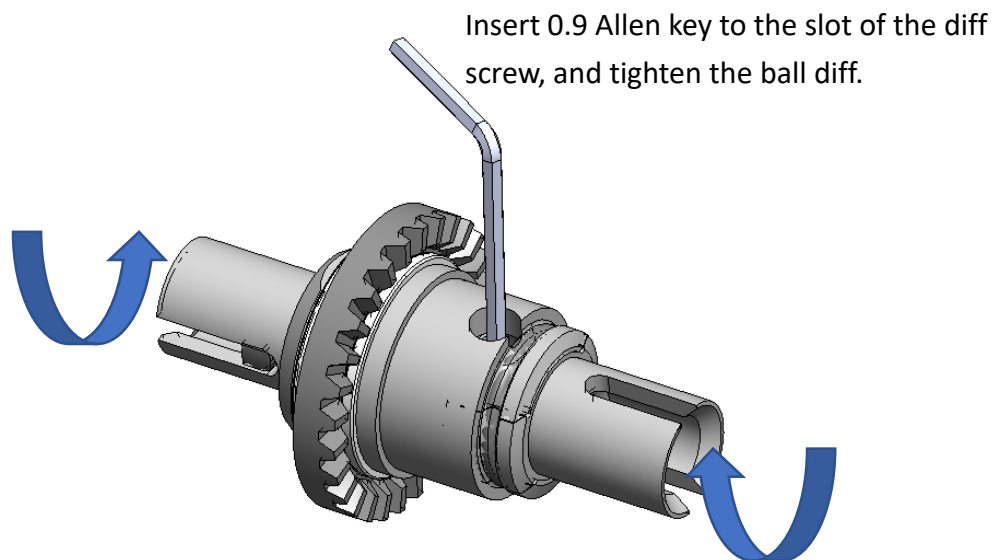
Thrust Bearing (with 2 x 6 x 0.6 steel ring)

Diff Screw

Step-05



Step-06



Step-07

Because the design and dimension of the Aluminium Ball Diff is different to the stock plastic diff, we need to re-arrange the gear box bearings and shims position.

Make sure the gear mesh is smooth and with minimal slop.

